

4188



Service Manual

ORDER NO.
RRV1057

CD CDV LD PLAYER

CLD-900

CLD-900S

- Refer to the service manual ARP2543 for CLD-1700/HEZ and CLD-700/HEZ.

THIS MANUAL IS APPLICABLE TO THE FOLLOWING MODEL(S) AND TYPE(S).

Type	Model		Power Requirement	The voltage can be converted by the following method.
	CLD-900	CLD-900S		
HEZ	○	—	AC220-230V	AC240V, *
HB	○	—	AC240V	AC220-230V, *
HEZW/SP	—	○	AC220-230V	AC240V, *

* : Alter the wiring of the Power-supply block at the primary winding of Power transformer referring to the "Line Voltage Selection" described in Service Manual.

PIONEER ELECTRONIC CORPORATION 4-1, Meguro 1-Chome, Meguro-ku, Tokyo 153, Japan
PIONEER ELECTRONICS SERVICE INC. P.O. Box 1760, Long Beach, California 90801 U.S.A.
PIONEER ELECTRONICS OF CANADA, INC. 300 Allstate Parkway Markham, Ontario L3R 0P2 Canada
PIONEER ELECTRONIC [EUROPE] N.V. Haven 1087 Keetberglaan 1, 9120 Melsele, Belgium
PIONEER ELECTRONICS AUSTRALIA PTY. LTD. 178-184 Boundary Road, Braeside, Victoria 3195, Australia TEL: [03] 580-9911
 © **PIONEER ELECTRONIC CORPORATION 1994**

O-IFO MAR. 1994 Printed in Japan

4188

CONTRAST OF MISCELLANEOUS PARTS

NOTES:

- Parts marked by "NSP" are generally unavailable because they are not in our Master Spare Parts List.
- The Δ mark found on some component parts indicates the importance of the safety factor of the part. Therefore, when replacing, be sure to use parts of identical designation.
- Parts marked by "⊙" are not always kept in stock. Their delivery time may be longer than usual or they may be unavailable.
- When ordering resistors, first convert resistance values into code form as shown in the following examples.
 - Ex.1 When there are 2 effective digits (any digit apart from 0), such as 560 ohm and 47k ohm (tolerance is shown by J=5%, and K=10%).
 - 560 Ω \rightarrow $56 \times 10^1 \rightarrow 561$ RD1/8PM $\boxed{5}\boxed{6}\boxed{1}J$
 - 47k Ω \rightarrow $47 \times 10^3 \rightarrow 473$ RD1/4PS $\boxed{4}\boxed{7}\boxed{3}J$
 - 0.5 Ω \rightarrow 0R5 RN2H $\boxed{0}\boxed{R}\boxed{5}K$
 - 1 Ω \rightarrow 010 RSIP $\boxed{0}\boxed{1}\boxed{0}K$
 - Ex.2 When there are 3 effective digits (such as in high precision metal film resistors).
 - 5.62k Ω \rightarrow $562 \times 10^1 \rightarrow 5621$ RN1/4PC $\boxed{5}\boxed{6}\boxed{2}\boxed{1}F$

CLD-900/HEZ, HB, CLD-900S/HEZW/SP and CLD-1700/HEZ have the same construction except for the following :

Mark	Symbol & Description	Part No.				Remarks
		CLD-1700/ HEZ	CLD-900/ HEZ	CLD-900/ HB	CLD-900S/ HEZW/SP	
⊙ NSP	MOTHER assy	VWM1396	VWM1458	VWM1458	VWM1458	
	MAIN assy	VWX1182	
	MAIN assy	VWX1207	VWX1207	VWX1207	
NSP	AUDIO assy	VWX1124	
	AUDIO assy	VWX1208	VWX1208	VWX1208	
⊙ NSP	SCRB assy	VWV1248	
	SCRB assy	VWV1352	VWV1352	VWV1352	No. 1
⊙ NSP	FLKB assy	VWM1278	
	FLKB assy	VWM1472	VWM1472	VWM1472	
NSP	FLKY assy	VWG1336	
	FLKY assy	VWG1523	VWG1523	VWG1523	No. 25
NSP	PSWB assy	VWG1315	
NSP	PWSB assy	VWG1526	VWG1526	VWG1526	No. 26
NSP	HEPB assy	VWV1254	
⊙	SYPS assy	VWR1146	
	SYPS assy	VWR1177	VWR1178	VWR1177	No. 2
	Door spring	VBH1202	VBH1223	VBH1223	VBH1223	No. 27
	Connection cord	VDE-055	
	Euro scart cable (21P)	VDE1027	
Δ	AC power cord	VDG1028	
Δ	AC power cord HE	PDG1003	PDG1003	No. 3
Δ	AC power cord HB plug	PDG1055	
	Disc pad	VEC1191	VEC1657	VEC1657	VEC1657	
	Disc pad (C)	VEC1380	VEC1658	VEC1658	VEC1658	
	FL lens	VEC1568	VEC1631	VEC1631	VEC1631	No. 37
	Cushion	VEC1578	
NSP	PC support	VEC1584	
	Pad (F)	VHA1105	
	Pad (R)	VHA1106	
	Protector A	VHB1004	VHB1004	VHB1004	No. 4

Note : The numbers in the remarks column correspond to the numbers on the exploded diagram. Refer to "EXPLODED VIEWS".

Mark	Symbol & Description	Part No.				Remarks
		CLD-1700/ HEZ	CLD-900/ HEZ	CLD-900/ HB	CLD-900S/ HEZW/SP	
	Protector B	VHB1005	VHB1005	VHB1005	No. 5
	Insulator	PNW1912	PNW1912	PNW1912	For front
	Insulator assy	DXA1490	For front
	Insulator assy	VXA1881	VXA1881	VXA1881	DXA1491	For rear
	LED lens	PNW2019	PNW2019	PNW2019	No. 6
NSP	Laser disc badge	VAM1029	VAM1029	VAM1029	No. 7
	Name plate	VAM1032	VAM1032	VAM1032	No. 8
	Packing case	VHG1260	VHG1341	VHG1342	VHG1348	
NSP	Rear panel	VNA1278	VNA1410	VNA1411	
	Rear panel	VNA1428	
	Snap plate	VNE1102	
	Jack holder	VNE1811	
	Door holder	VNE1812	VNE1905	VNE1905	VNE1905	No. 28
	FL filter	VNK1694	
	PW button	VNK2002	VNK2329	VNK2329	VNK2329	No. 29
	Volume knob	VNK2003	
	Tray panel	VNK2032	
NSP	Tray panel	VNK2319	VNK2319	VNK2319	No. 30
NSP	CD door	VNK2033	
	CD door	VNK2320	VNK2320	VNK2320	No. 31
	Sub panel	VNK2034	VNK2648	VNK2648	VNK2648	No. 32
	Main key	VNK2035	VNK2324	VNK2324	VNK2324	No. 33
	Ten key	VNK2036	VNK2331	VNK2331	VNK2331	No. 34
	Mode key	VNK2037	
	CD button	VNK2038	
	Shuttle knob	VNK2039	VNK2321	VNK2321	VNK2321	No. 35
NSP	Center panel	VNK2085	
	Skip key L	VNK2322	VNK2322	VNK2322	No. 9
	Skip key R	VNK2323	VNK2323	VNK2323	No. 10
	LED lens A	VNK2325	VNK2325	VNK2325	No. 11
	Tray assy-S	VXX1729	VXX2066	VXX2066	VXX2066	
NSP	LD tray	VNK1991	VNK2550	VNK2550	VNK2550	
	Operating instructions (English/French/German/Italian)	VRE1010	VRE1020	VRE1020	No. 12
	Operating instructions (Dutch/Swedish/Spanish/Portuguese)	VRF1017	VRF1026	No. 13
	Operating instructions (Spanish)	VRD1018	No. 14
NSP	Front panel	VNK2646	VNK2646	VNK2710	No. 15
NSP	Caution card (EW)	VRM1027	VRM1027	VRM1027	No. 16
NSP	Caution card	VRR1009	VRR1009	No. 17
NSP	Caution card (UC)	VRR1020	No. 18
NSP	Caution card (UC)	VRM1039	
	Front panel assy	VXA1867	
	Front panel assy-S	VXX2034	VXX2034	VXX2050	No. 19
	CD door assy-S	VXX1728	
	Center panel assy-S	VXX1757	
	Tray panel assy-S	VXX1931	VXX1931	VXX1931	No. 20
	Damper assy	VXA1999	VXA1999	VXA1999	No. 21
	Remote control unit (CU-CLD077)	VXX1758	
	Remote control unit (CU-CLD072)	VXX2016	VXX2016	VXX2016	
	Battery cover	VNK1293	PZN1010	PZN1010	PZN1010	

Note : The numbers in the remarks column correspond to the numbers on the exploded diagram. Refer to "EXPLODED VIEWS".

CLD - 900, CLD - 900S

Mark	Symbol & Description	Part No.				Remarks
		CLD-1700/ HEZ	CLD-900/ HEZ	CLD-900/ HB	CLD-900S/ HEZW/SP	
NSP	Caution label	VRW1094	VRW1094	VRW1094	* 1
	Caution label	PRW1018	* 1
	Caution label HE	VRW1297	VRW1297	VRW1297	* 1
	Service telephone list	VRR1021	No. 22
	Connection diagram	VRR1022	No. 23
NSP	Telephone number card (For service information)	VRR1023	No. 24
NSP	Polyethylene bag	Z21-029	

* 1 : Refer to the SAFETY INFORMATION in the service manual ARP2543 for CLD- 1700 and CLD- 700.

Note : The numbers in the remarks column correspond to the numbers on the exploded diagram. Refer to "EXPLODED VIEWS".

LIST OF ASSEMBLIES (FOR CLD- 900 AND CLD- 900S)

MOTHER assy

- MAIN assy
- AUDIO assy
- SCRB assy

FLKB assy

- FLKY assy
- PWSB assy

MAIN ASSY

VWX1207 and VWX1116 of CLD - 700/HEZ have the same construction except for the following :

Mark	Symbol & Description	Part No.		Remarks
		VWX1116	VWX1207	
	IC101	PD0135B	PD0135C	
	C446, C618	CQMA103J50	CFTXA103J50	
	C567	CEAS470M16	
	C580	CKSQYF103Z50	
	R852, R853	RS1/10S823J	RS1/10S563J	
	R868	RS1/10S222J	RS1/10S182J	
	R871	RS1/10S223J	RS1/10S203J	

AUDIO ASSY

VWX1208 and VWX1117 of CLD - 700/HEZ have the same construction except for the following :

Mark	Symbol & Description	Part No.		Remarks
		VWX1117	VWX1208	
	IC201	CXD2500AQ	CXD2500BQ	
	Q222, Q223	2SA1037K	
	L201, L202, L204, L205	LAU010K	LAU1R0J	
	C284, C285	CEAS100M50	
	C325, C326	CKSQYF104Z25	
	R320, R321	RS1/10S101J	
	R322, R323	RS1/10S472J	
	R324, R325	RS1/10S224J	

SYPS ASSY

VWR1177, VWR1178 and VWR1146 of CLD - 700/HEZ have the same construction except for the following :

Mark	Symbol & Description	Part No.			Remarks
		VWR1146	VWR1177	VWR1178	
	L2	VTL-004	VTL-004	

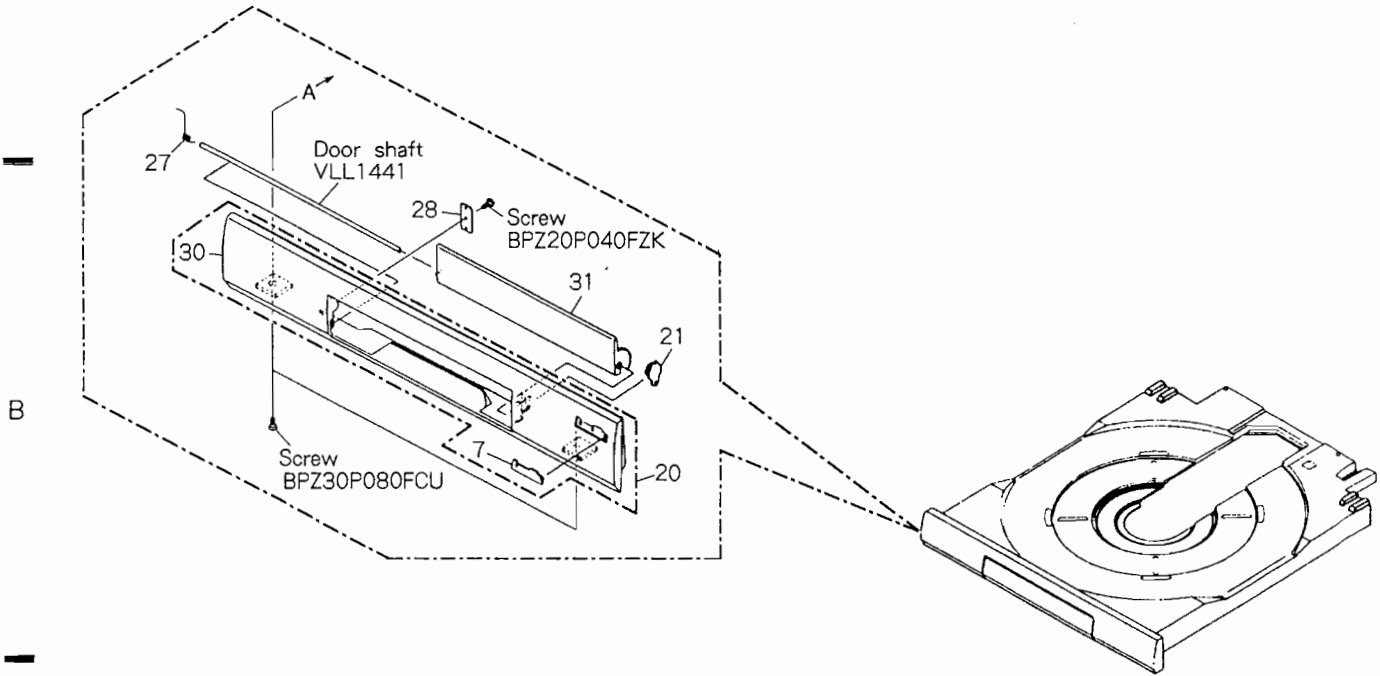
● PCB PARTS LIST

Mark No.	Description	Part No.	Mark No.	Description	Part No.
FLKY ASSY			SCRB ASSY		
SEMICONDUCTORS			SEMICONDUCTOR		
IC201		PD3275A	Q701		2SC1740S
IC202		S-806D			
Q203		DTA144ES	CAPACITORS		
Q202		DTC114ES	C703,C704		CCSQCH271J50
Q201,Q204		DTC124ES	C701,C702		CEAS470M16
			C706		CEAS471M10
D203- D206		1SS252	C705		CKSQYF104Z25
D201		1SS254	RESISTORS		
D210		PG3361X	R705		DCN1003
SWITCHES			R709		RD1/6PM103J
S201- S204,S206,S210,S214		RSG1030	R704		RD1/6PM391J
S217- S225		RSG1030	R706		RD1/6PM680J
S205,S207- S209,S211- S213		RSG1034	Other Resistors		RS1/10S □□□J
S215,S216		RSG1034	OTHERS		
S228		VSD1008	JA9	7P CABLE HOLDER	51048-0700
CAPACITORS				RGB CONNECTOR	VKB1037
C204		CEAL100M16			
C201		CEAL101M6R3			
C206		CEAL2R2M50			
C207		CEAS100M16			
C205		CKPUYF103Z25			
C202,C203		CKPUYF223Z25			
RESISTORS					
R230		RAST104J			
Other Resistors		RD1/6PM □□□J			
OTHERS					
X201	CERAMIC RESONATOR (8.00MHz)	EFOEC8004A4			
	REMOTE CONTROL SENSOR UNIT	GPIU58X			
V201	FL TUBE	VAW1033			
J21	CORD (4P)	VDA1440			
	SPACER	VEC1599			
	FL HOLDER	VNF1078			
PWSB ASSY					
SEMICONDUCTOR					
D211		SLH34VCF04			
SWITCH					
S226		RSG1030			
RESISTORS					
All Resistors		RD1/6PM □□□J			

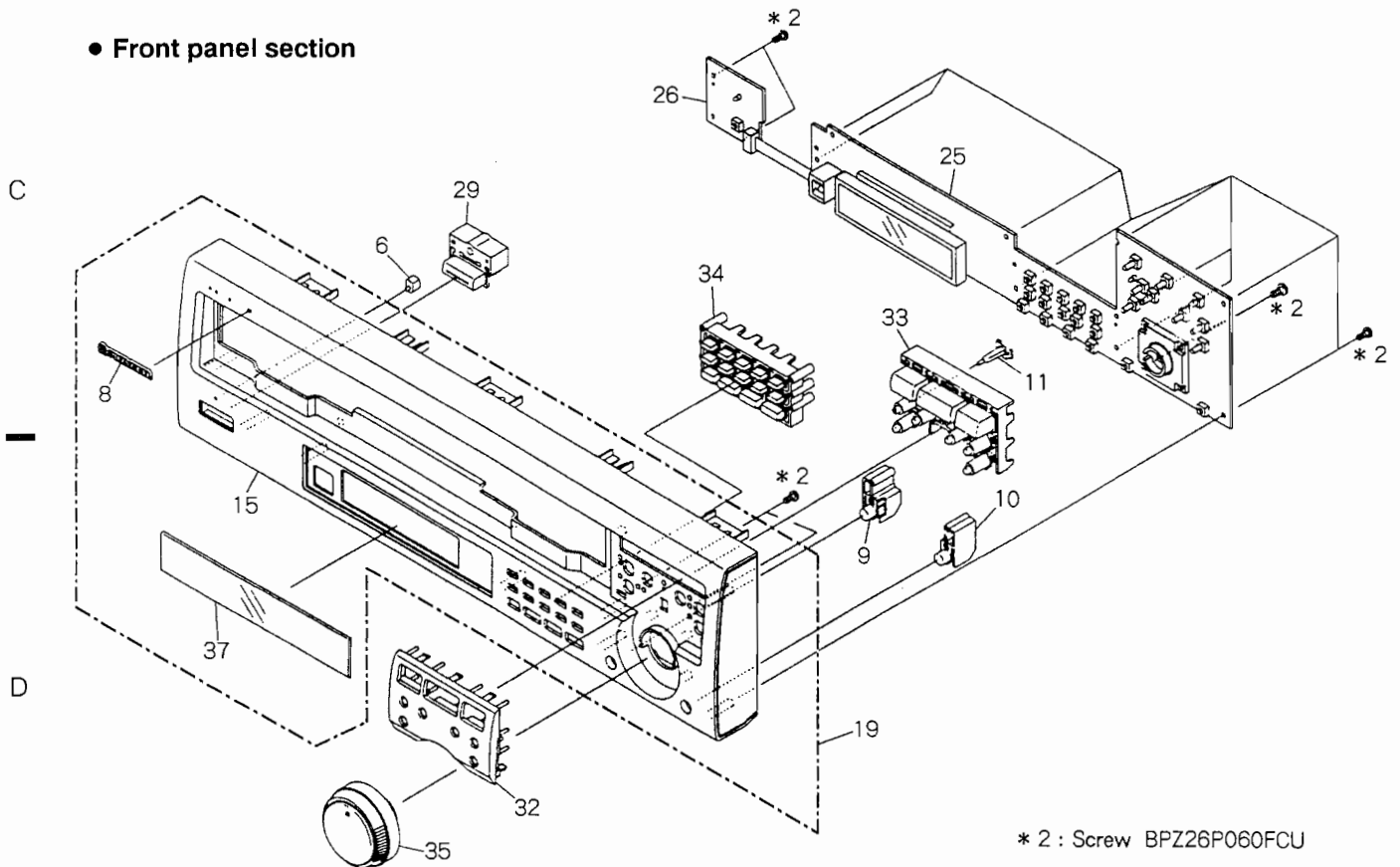
● EXPLODED VIEWS

Note :
The numbers on the exploded diagram correspond to the numbers in the remarks column of the comparative table. Refer to "CONTRAST OF MISCELLANEOUS PARTS".

● Tray panel section

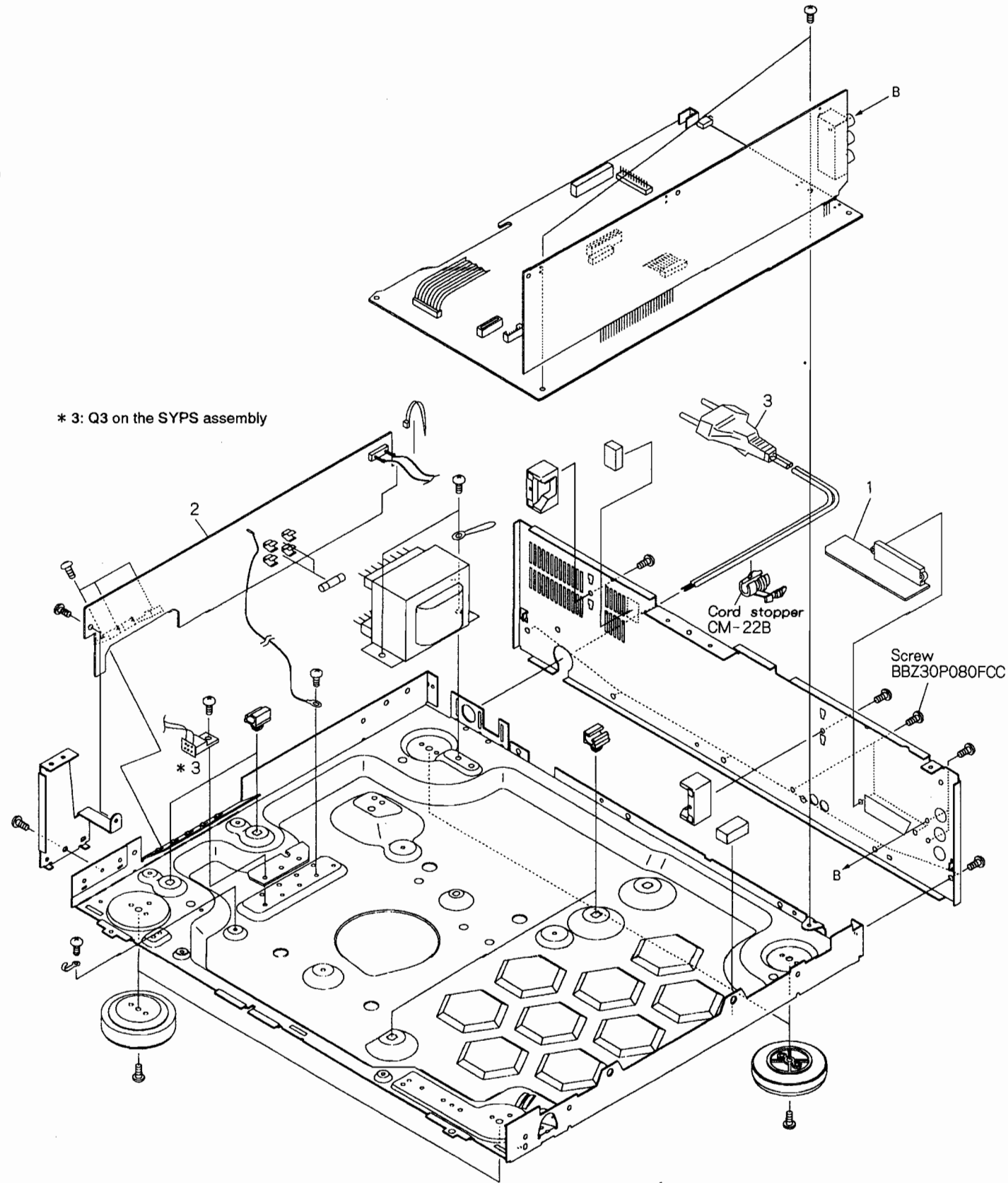


● Front panel section

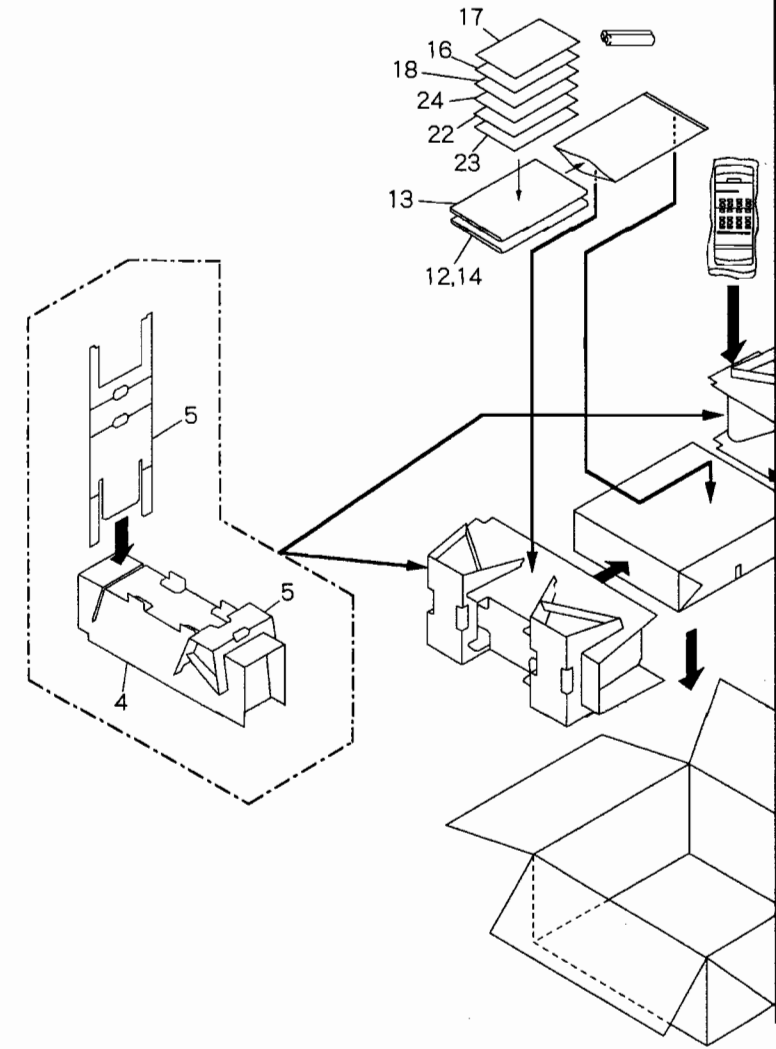


* 2 : Screw BPZ26P060FCU

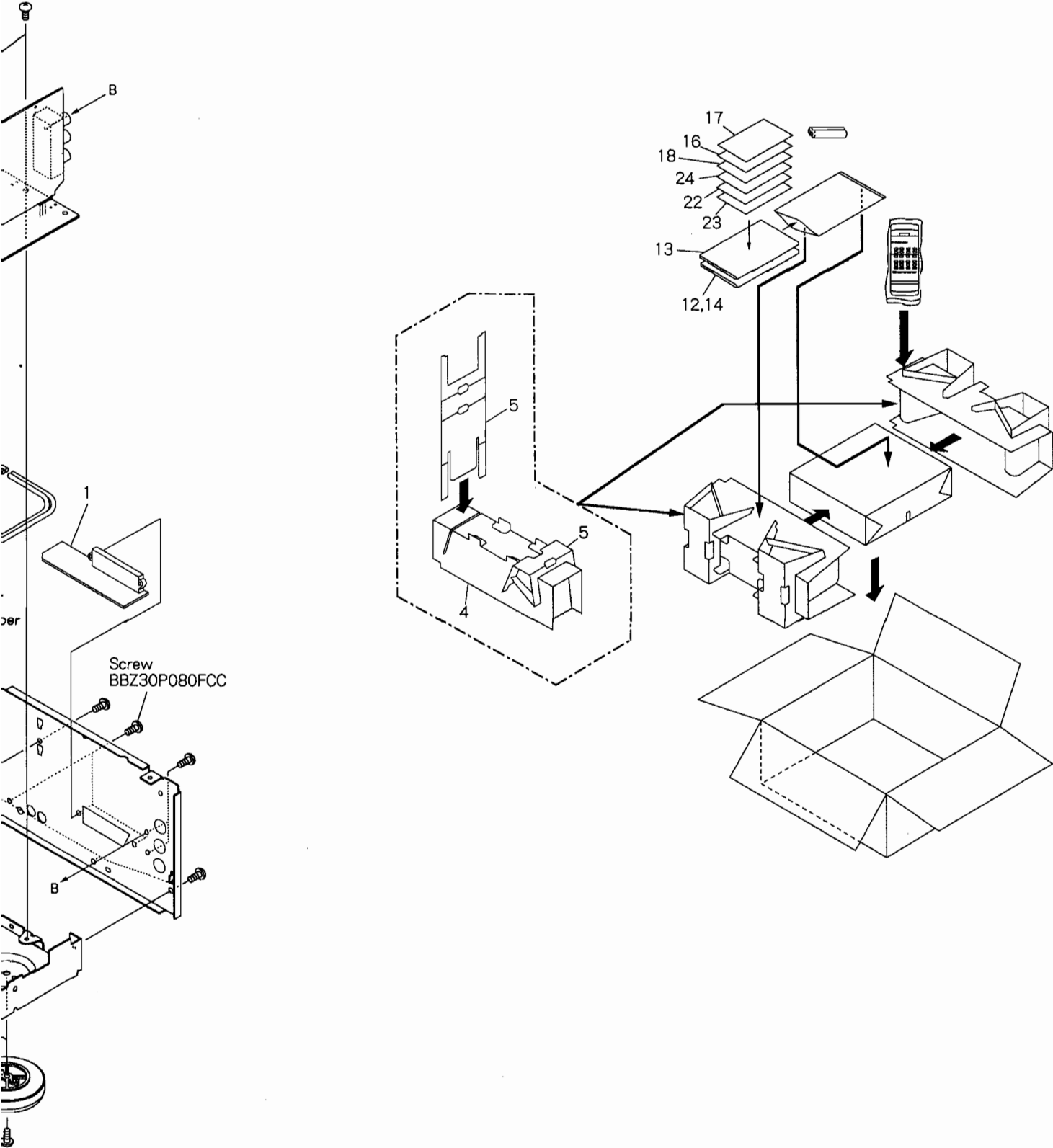
● Base section



● Packing



● Packing



● SCHMATIC DIAGRAM AND PCB PATTERNS

NOTE FOR SCHEMATIC DIAGRAMS (Type 4A)

1. When ordering service parts, be sure to refer to "PARTS LIST of EXPLODED VIEWS" or "PCB PARTS LIST".

2. Since these are basic circuits, some parts of them or the values of some components may be changed for improvement.

3. RESISTORS:
Unit: k:kΩ, M:MΩ, or Ω unless otherwise noted.
Rated power: 1/4W, 1/8W, 1/8W, 1/10W unless otherwise noted.
Tolerance:(F):±1%, (G):±2%, (K):±10%, (M):±20% or ±5% unless otherwise noted.

4. CAPACITORS:
Unit: p:pF or μF unless otherwise noted.
Ratings: capacitor (μF) / voltage (V) unless otherwise noted.
Rated voltage: 50V except for electrolytic capacitors.

5. COILS:
Unit: m:mH or μH unless otherwise noted.

6. VOLTAGE AND CURRENT:
□ or ←V: DC voltage (V) in PLAY mode unless otherwise noted.
⊙mA or ←mA: DC current in PLAY mode unless otherwise noted.
Value in () is DC current in STOP mode.

7. OTHERS:
● or ⊙: Adjusting point.
◀: Measurement point.
● The Δ mark found on some component parts indicates the importance of the safety factor of the parts. Therefore, when replacing, be sure to use parts of identical designation.

8. SCH - □ ON THE SCHEMATIC DIAGRAM:
● SCH-□ indicates the drawing number of the schematic diagram. (SCH stands for schematic diagram.)

9. SWITCHES (Underline indicates switch position):
PWSB ASSY
S226 : POWER (STANDBY/ON)

FLKY ASSY
S201 : 1
S202 : 7
S203 : ▷▷
S204 : ◁◁
S205 : Δ
S206 : 8
S207 : ▷/||
S208 : □
S209 : DIRECT CD
S210 : 9
S211 : CHP/TIME
S212 : HILITE/INTRO
S213 : D-LEVEL CONTROL
S214 : 0
S215 : RANDOM PLAY
S216 : LANGUAGE
S217 : 5
S218 : 3
S219 : CLEAR
S220 : PGM
S221 : 4
S222 : 2
S223 : +10
S224 : EDIT
S225 : 6
S228 : SCAN

NOTE FOR PCB DIAGRAMS:

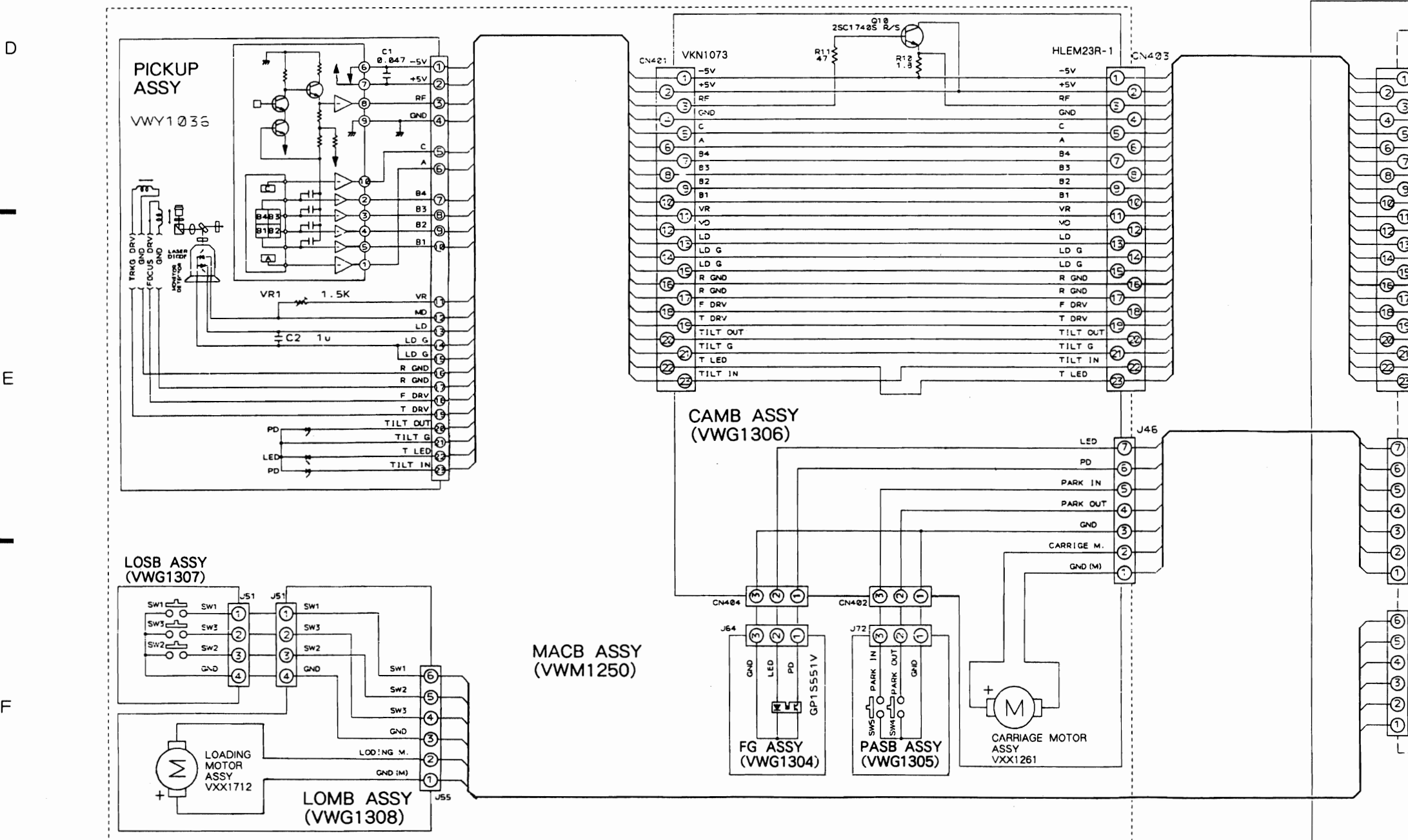
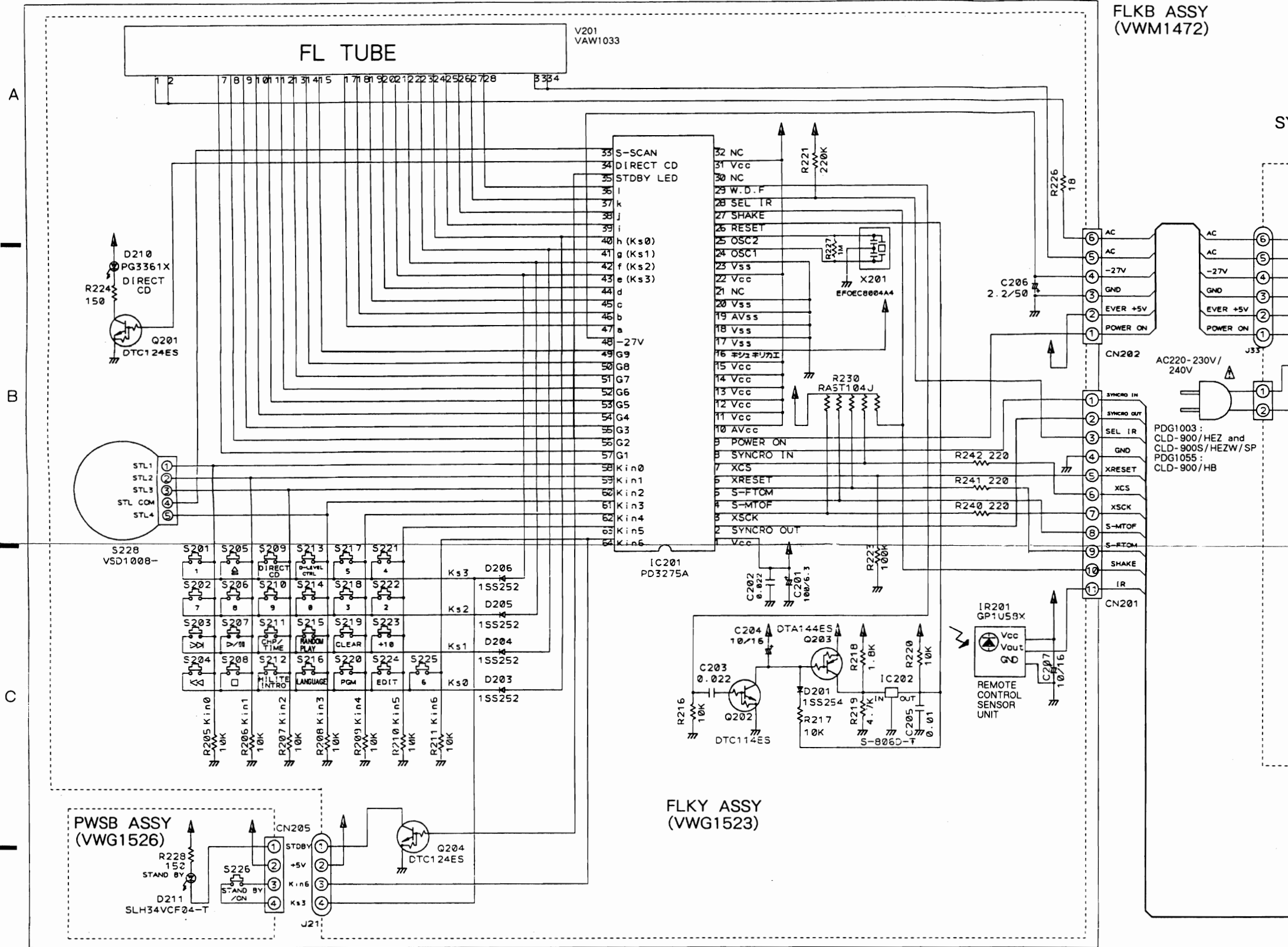
1. Part numbers in PCB diagrams match those in the schematic diagrams.
2. A comparison between main parts of PCB and schematic diagrams is shown below.

Symbol in PCB Diagrams	Symbol in Schematic Diagrams	Part Name
		Transistor
		Diode
		Capacitor (Polarized)

3. The transistor terminal marked with E or □ shows the emitter.
4. The diode terminal marked with ⊙ or ◐ shows cathode side.
5. The capacitor terminal marked with ⊙ or ◐ shows negative terminal.

1. Part numbers in PCB diagrams match those in the schematic diagrams.
2. A comparison between main parts of PCB and schematic diagrams is shown below.

Symbol in PCB Diagrams	Symbol in Schematic Diagrams	Part Name
		Transistor
		Transistor with resistor
		Field effect transistor
		Resistor array
		3-terminal regulator

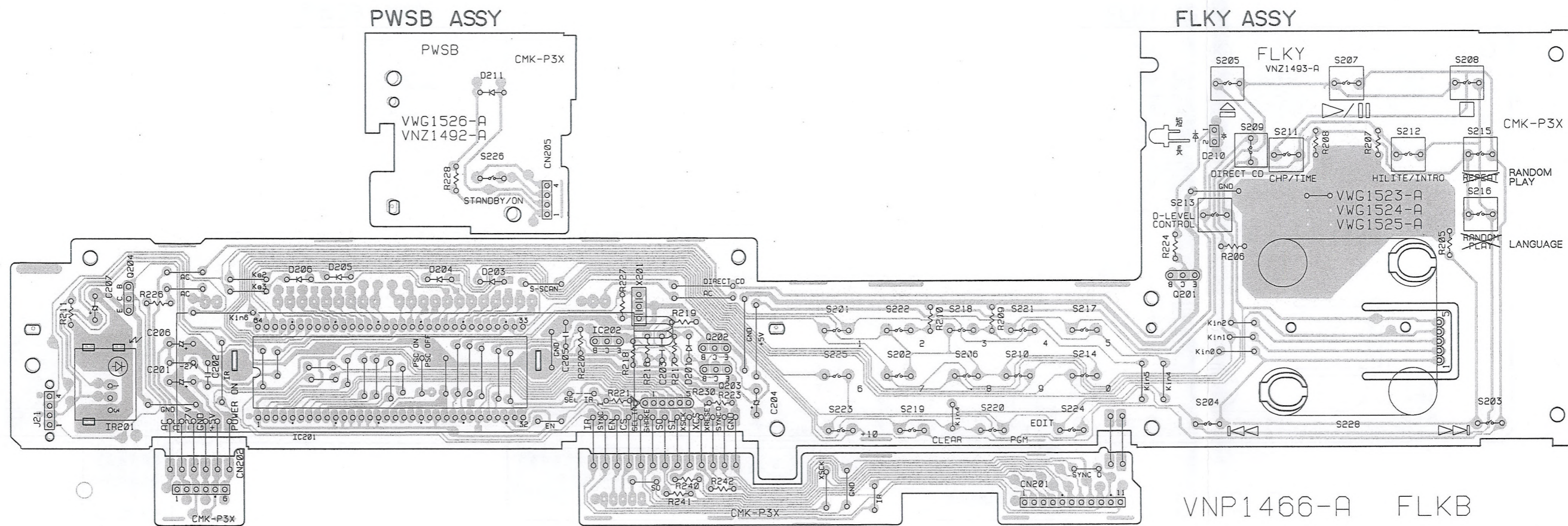


A

B

A

B



Q204

IC201

IC202

Q202 Q203

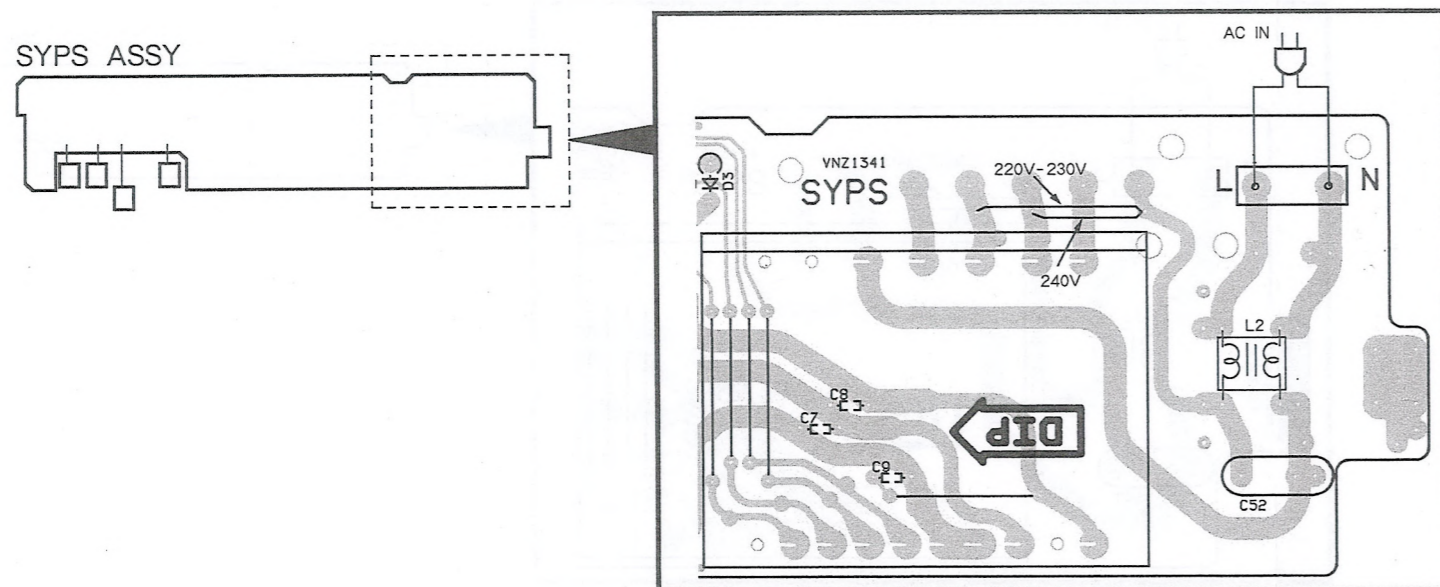
Q201

C

D

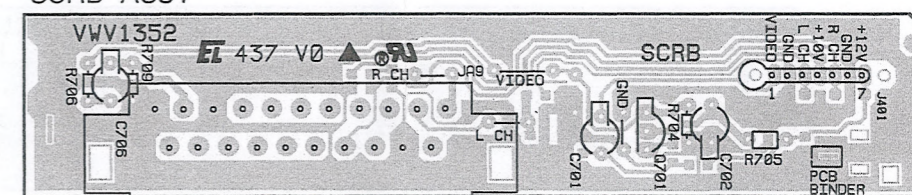
C

D

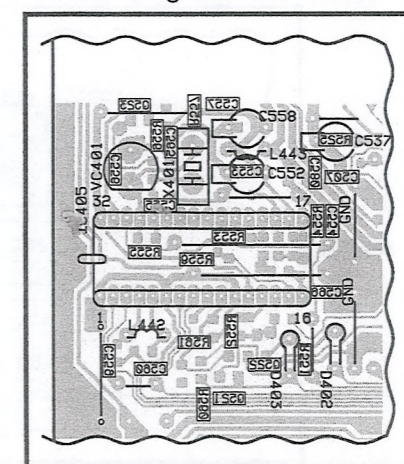


• This diagram is viewed from the mounted parts side.

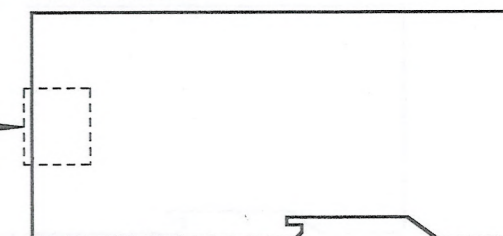
SCRB ASSY



• PCB diagram for C580

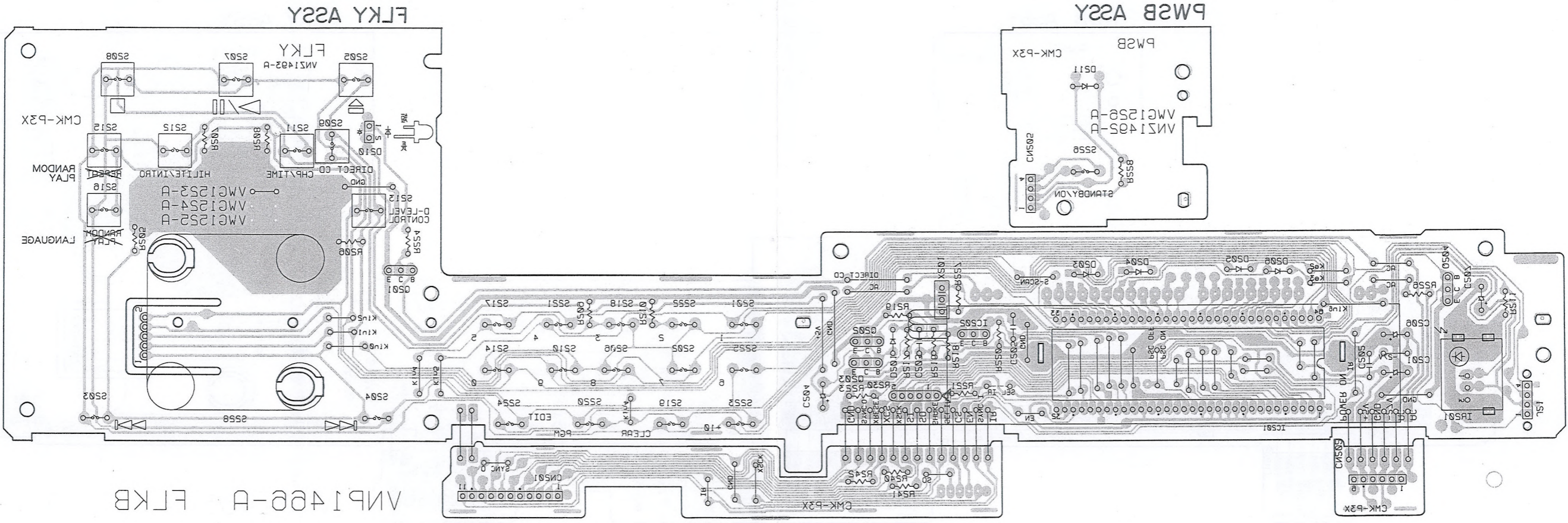


MAIN ASSY



A

B



A

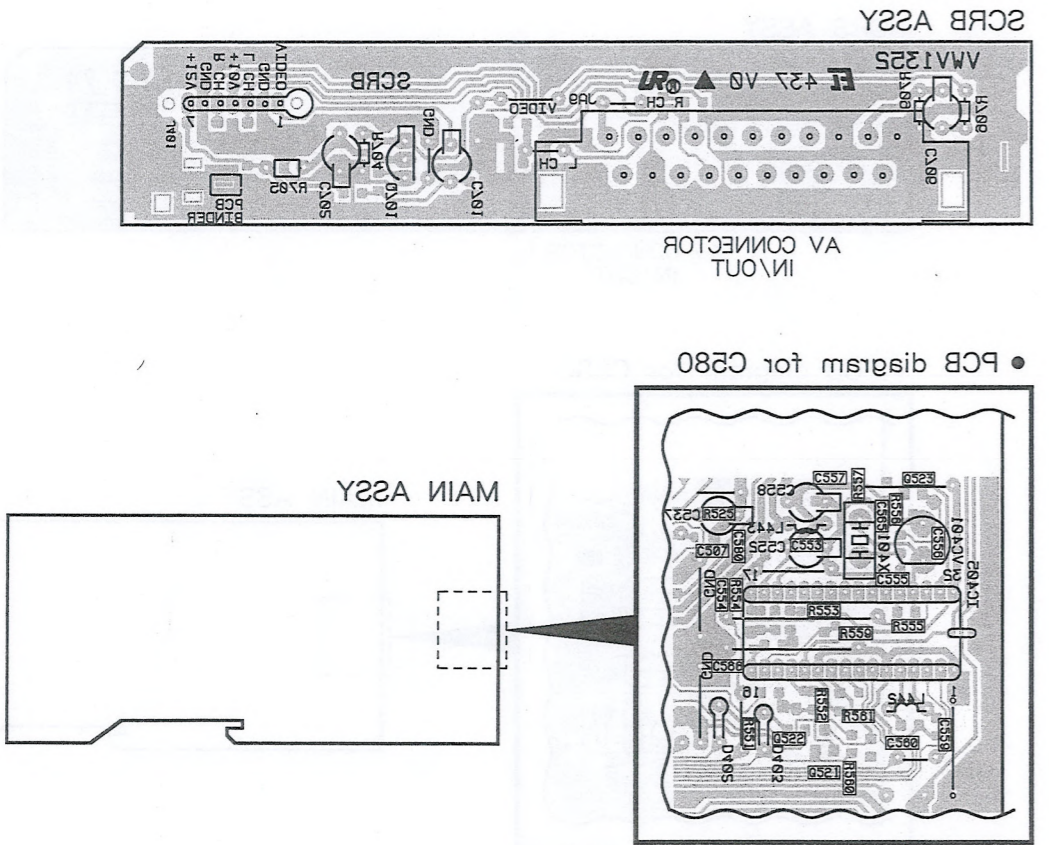
B

VP1400-A FLKB

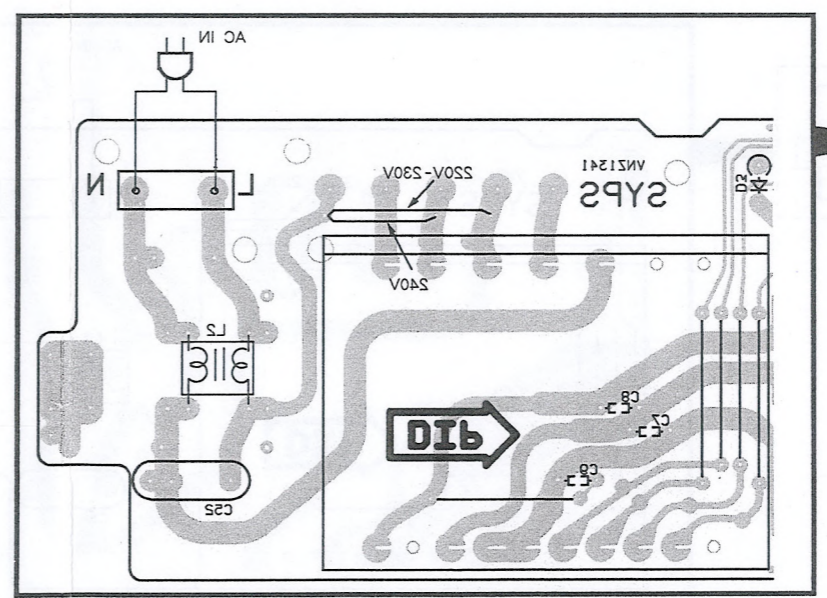
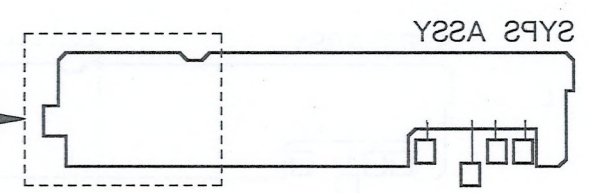
Q501 Q502 Q503 IC501 IC502 IC503 IC504

C

D



• PCB diagram for C280



• This diagram is viewed from the foil side.

C

D

SYPS ASSY (VWR1177 : CLD-900/HEZ and CLD-900S/HEZW/SP)
(VWR1178 : CLD-900/HB)

