

Service Manual

ORDER NO.
RRV2194

DVD LD PLAYER

DVL-919 (1)

THIS MANUAL IS APPLICABLE TO THE FOLLOWING MODEL(S) AND TYPE(S).

| Type | Model | Power Requirement | Region No. | The voltage can be converted by the following method. |
|--------|-------------|--------------------|------------|---|
| | DVL-919 (1) | | | |
| KU/CA2 | ○ | AC120V | 1 | _____ |
| RD/RA2 | ○ | AC110-127/220-240V | 1 | Automatic select |

● This service manual should be used together with the following manual(s):

| Model No. | Order No. | Remarks |
|---------------|-----------|---------|
| DVL-919/KU/CA | RRV2089 | |

- DVL-919 has two models which specifications are different. Each distinction will be confirmed with the indication of the rear cover and the packing case. Refer to “ Confirm it ”.

CONTENTS

| | |
|--|---|
| 1. CONTRAST OF MISCELLANEOUS PARTS | 2 |
| 2. SCHEMATIC DIAGRAM | 4 |
| 3. PCB CONNECTION DIAGRAM | 6 |
| Confirm it | 8 |

1. CONTRAST OF MISCELLANEOUS PARTS

- NOTES :
- Parts marked by “NSP” are generally unavailable because they are not in our Master Spare Parts List.
 - The Δ mark found on some component parts indicates the importance of the safety factor of the part. Therefore, when replacing, be sure to use parts of identical designation.
 - Reference Nos. indicate the pages and Nos. in the service manual for the base model.
 - When ordering resistors, first convert resistance values into code form as shown in the following examples.
- Ex. 1 When there are 2 effective digits (any digit apart from 0), such as 560 ohm and 47k ohm (tolerance is shown by $J = 5\%$, and $K = 10\%$).
- 560 $\Omega \rightarrow 56 \times 10^1 \rightarrow 561$ RD1/4PU $\boxed{5} \boxed{6} \boxed{1} J$
 47k $\Omega \rightarrow 47 \times 10^3 \rightarrow 473$ RD1/4PU $\boxed{4} \boxed{7} \boxed{3} J$
 0.5 $\Omega \rightarrow R50$ RN2H $\boxed{R} \boxed{5} \boxed{0} K$
 1 $\Omega \rightarrow 1R0$ RS1P $\boxed{1} \boxed{R} \boxed{0} K$
- Ex. 2 When there are 3 effective digits (such as in high precision metal film resistors).
- 5.62k $\Omega \rightarrow 562 \times 10^1 \rightarrow 5621$ RN1/4PC $\boxed{5} \boxed{6} \boxed{2} \boxed{1} F$

■ CONTRAST TABLE FOR KU/CA2 TYPE

KU/CA2 type and KU/CA type are constructed the same except for the following:

| Ref. No. | Mark | Symbol and Description | Part No. | | Remarks |
|----------|------|--|------------|-------------|---------|
| | | | KU/CA type | KU/CA2 type | |
| P7- 8 | | ASSEMBLIES DVDM ASSY | VWS1377 | VWS1397 | |
| P9-29 | | BOTTOM VIEW SECTION REAR COVER | VNA2028 | VNA2144 | |

● For PCB ASSEMBLIES, Refer to “CONTRAST OF PCB ASSEMBLIES”, “2. SCHEMATIC DIAGRAM” and “3. PCB CONNECTION DIAGRAM”.

■ CONTRAST TABLE FOR RD/RA2 TYPE

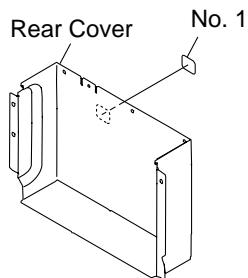
RD/RA2 type and RD/RA type are constructed the same except for the following:

| Ref. No. | Mark | Symbol and Description | Part No. | | Remarks |
|----------|------|-------------------------------------|------------|-------------|---------|
| | | | RD/RA type | RD/RA2 type | |
| P7- 8 | | ASSEMBLIES DVDM ASSY | VWS1377 | VWS1397 | |
| | | BOTTOM VIEW SECTION LABEL | Not used | VRW1789 | No. 1 |

- The numbers in the remarks column correspond to the numbers on the “EXPLODED VIEWS”.
- For PCB ASSEMBLIES, Refer to “CONTRAST OF PCB ASSEMBLIES”, “2. SCHEMATIC DIAGRAM” and “3. PCB CONNECTION DIAGRAM”.

■ EXPLODED VIEWS

● EXTERIOR



■ CONTRAST TABLE OF PCB ASSEMBLIES

UF DVDM ASSY

VWS1397 and VWS1377 are constructed the same except for the following:

| Mark | Symbol and Description | Part No. | | Remarks |
|------|--|---|--|---------|
| | | VWS1377 | VWS1397 | |
| | IC451 IC603 IC801 C451 C813, C814, C826 | Not used VYW1639 MB86371C Not used CEV101M6R3 | PQ2TZ15 VYW1657 MB86373 CKSQYF105Z16 CEV221M4 | |
| | C899 (2.2μF) R801 R816 R817 R818 | Not used RS1/16S272J RS1/16S102J Not used Not used | VCG1031 RS1/16S2401F RS1/16S2701F RS1/16S2701F RS1/16S103J | |
| | R820 R823 -R825 R834, R854, R874 R840, R860, R882 R843, R863, R878 | RS1/16S681J RS1/16S1500F RS1/16S1201F Not used Not used | RS1/16S1201F Not used Not used RS1/16S1201F RS1/16S1600F | |
| | R893 R3866, R3877, R3886 VR801 (1kΩ) | RS1/10S0R0J Not used VCP1125 | Not used RS1/16S0R0J Not used | |

DVL-919 (1)

2. SCHEMATIC DIAGRAM

2.1 DVDM ASSY (3/3)

3/3 F DVDM ASSY (VWS1397)

A

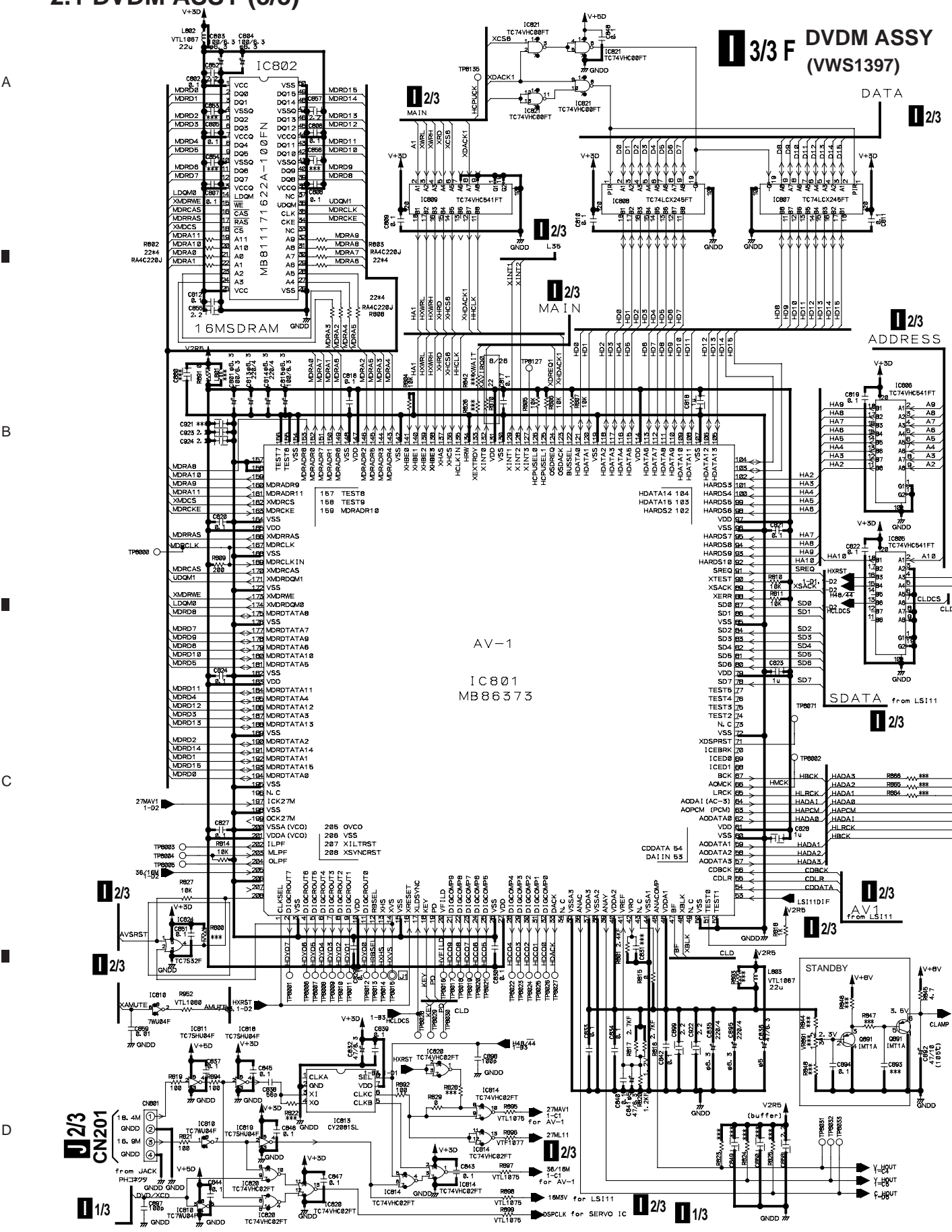
B

C

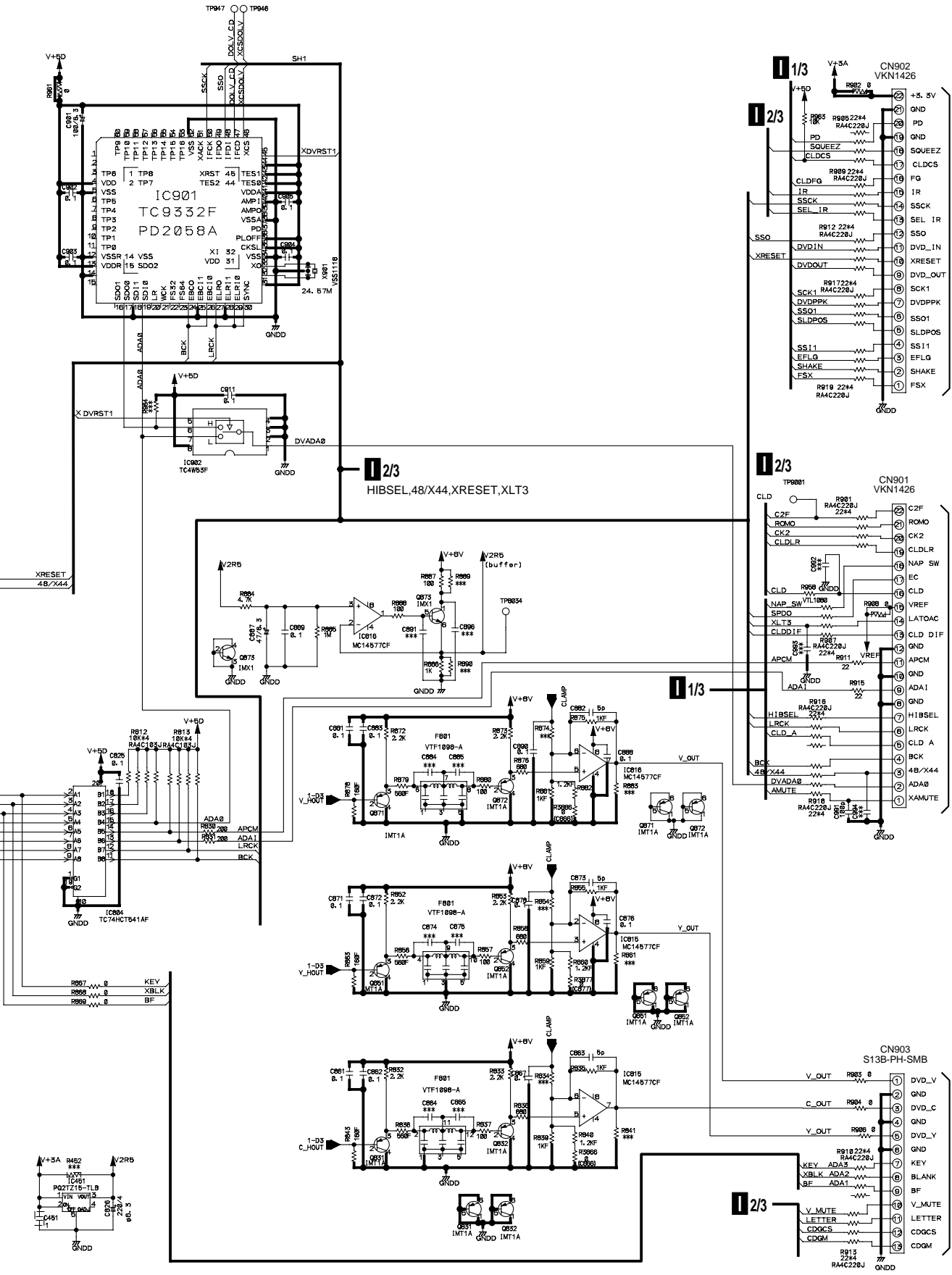
D

4

Downloaded from www.Manualslib.com manuals search engine



Note : When ordering service parts, be sure to refer to "EXPLODED VIEWS and PARTS LIST" or "PCB PARTS LIST".



A

B

C

D

3. PCB CONNECTION DIAGRAM

3.1 DVDM ASSY

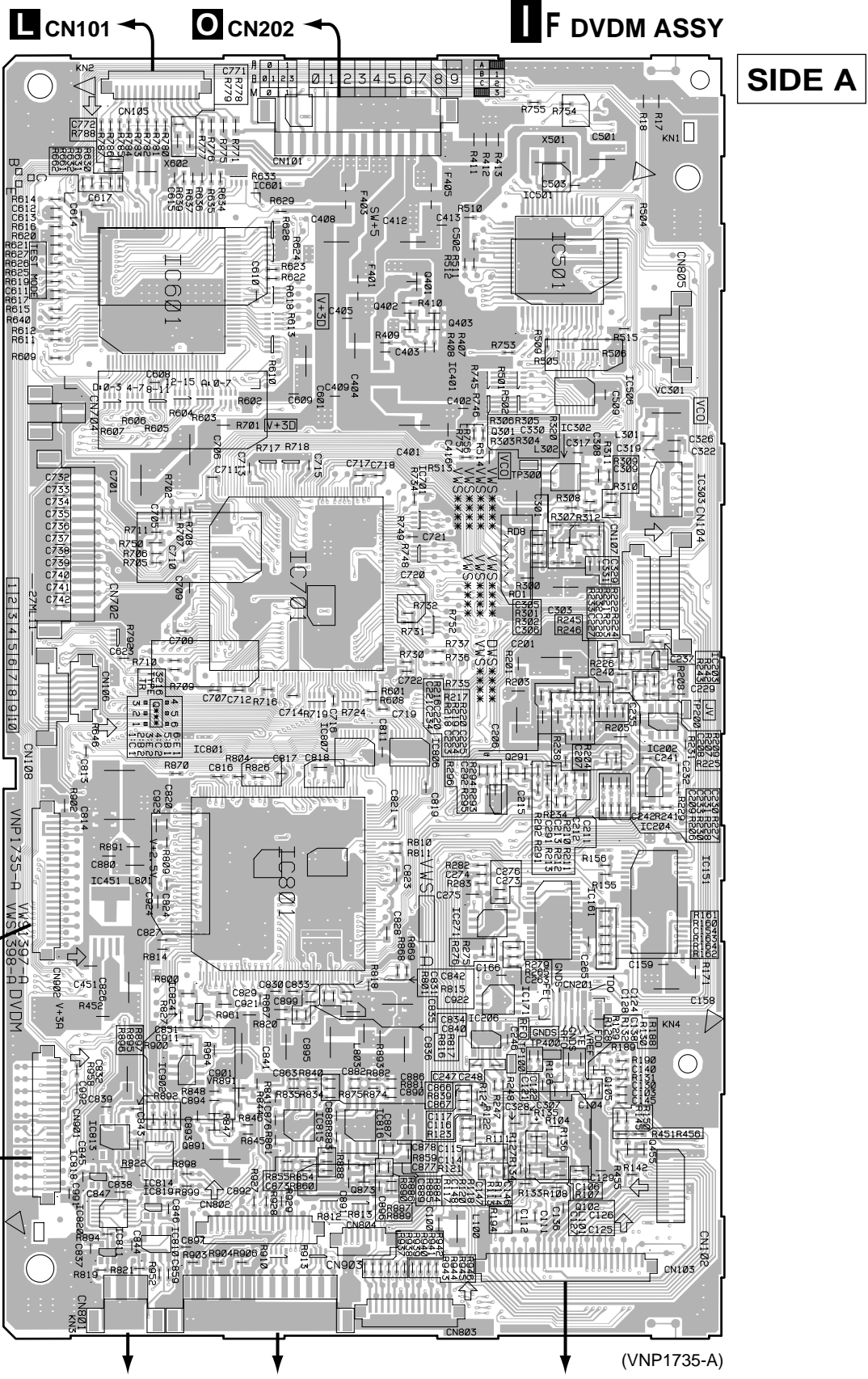
• This PCB is a four-layered board. Middle layer is mainly connected to Vcc and GND.

A

B

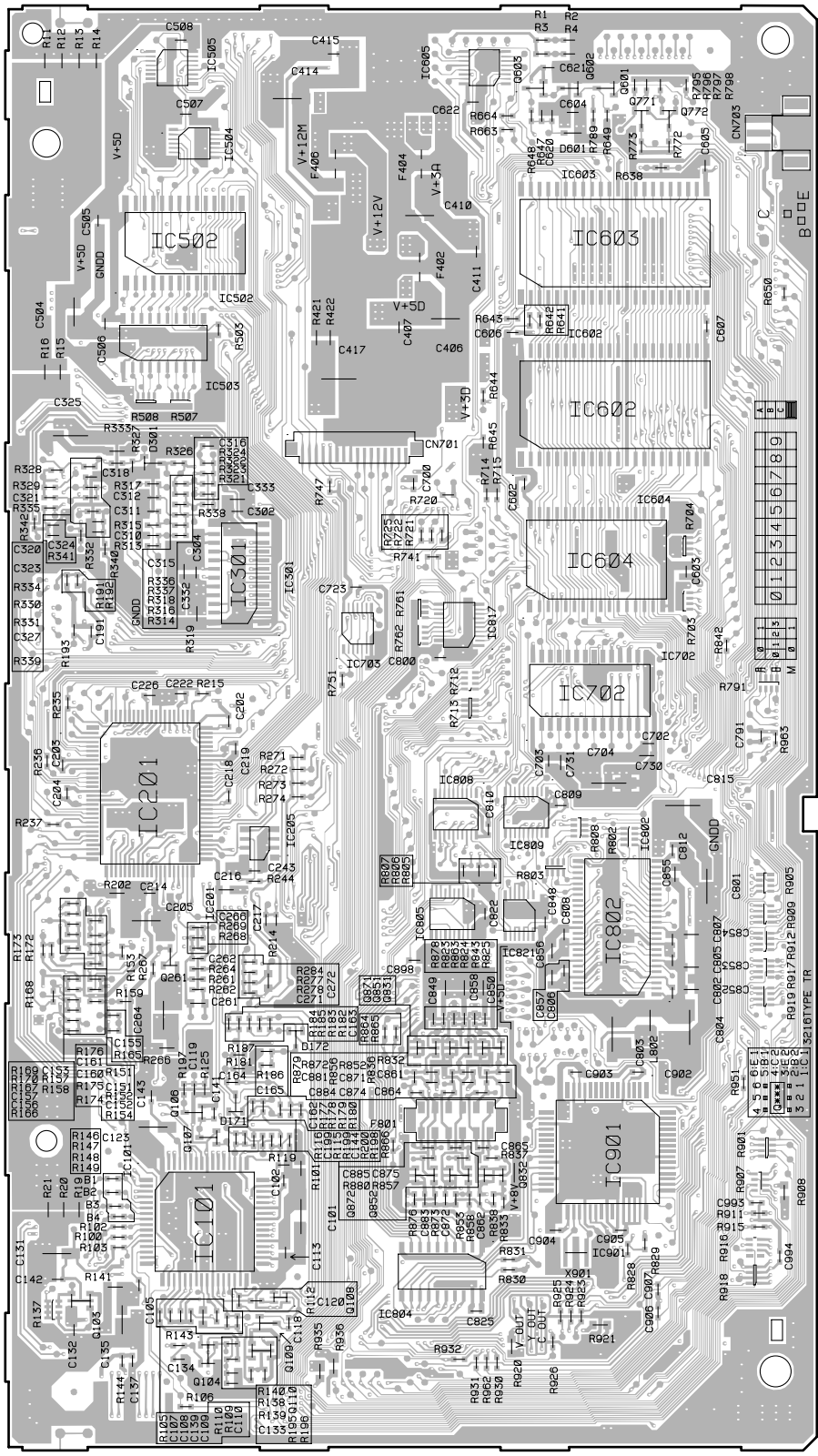
C

D



DF DVDM ASSY

SIDE B



- IC505 Q601
- IC605 Q603
- IC504 Q771
- Q772
- IC502 IC603
- IC503
- IC602
- IC301 IC604
- IC703 IC817
- IC702
- IC201 IC808
- IC809
- IC205
- IC805
- IC821
- IC802
- Q261
- Q871
- Q851
- Q831
- Q106
- Q107 IC901
- Q872
- Q852
- Q832
- IC101
- Q103 IC804
- Q108
- Q110
- Q104

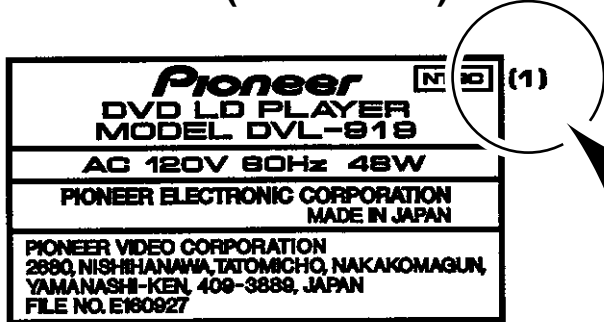
(VNP1735-A)



Confirm it

- DVL-919 has two models which specifications are different. Each distinction will be confirmed with the indication of the rear cover and the packing case. Refer to the following service manuals.

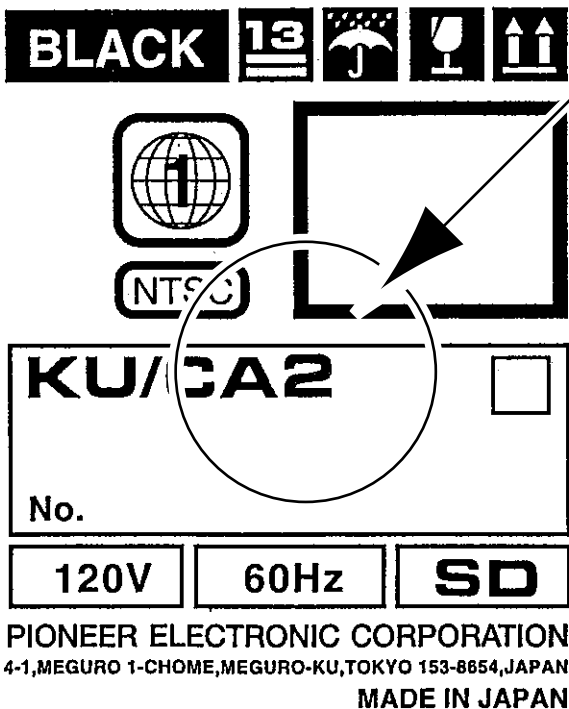
■ Rear View (Rear Cover)



" (1) " : RRV2194 (this manual)
 (DVL-919 (1)/KU/CA2)
 (DVL-919 (1)/RD/RA2)

 " none " : RRV2089
 (DVL-919/KU/CA)
 (DVL-919/RD/RA)

■ Packing Case



" KU/CA2 " or " RD/RA2 " : RRV2194 (this manual)
 (DVL-919 (1)/KU/CA2)
 (DVL-919 (1)/RD/RA2)

 " KU/CA " or " RD/RA " : RRV2089 (DVL-919/KU/CA)
 (DVL-919/RD/RA)