

Installing Pioneer MCI Drivers Included with Windows 95

Installing Windows 95 Pioneer MCI LaserDisc Driver

The Pioneer LaserDisc MCI driver are included with Windows 95. There are two steps to enable this driver. First, install the driver and, second, follow the steps for MCI driver setup.

1. Install the MCI Driver (For Sound, Video and Game Controllers)

First open "My Computer" and select the "New Hardware Install". From the "Add New Hardware Wizard", select the "Next" command button and you will see a window open similar to the one shown in **Figure A** below,

In "Add New Hardware Wizard", the user will be asked if Windows should search for new hardware. Choose NO.

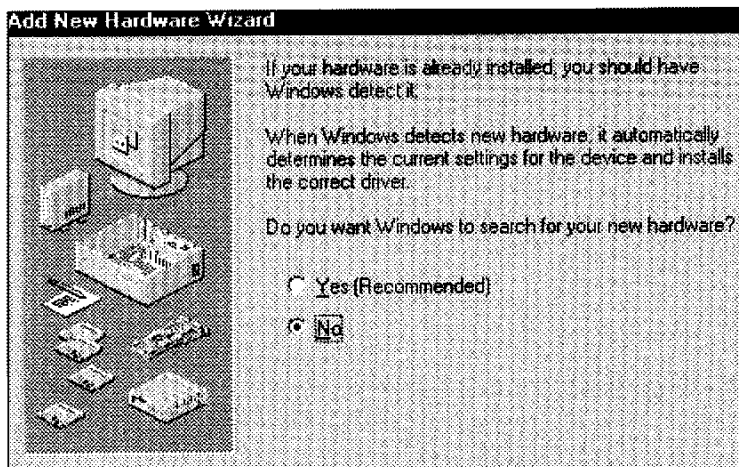


Figure A

After choosing NO, click on the "Next" command button to open the next window, similar to the one in **Figure B**, below.

(Continued on next page)

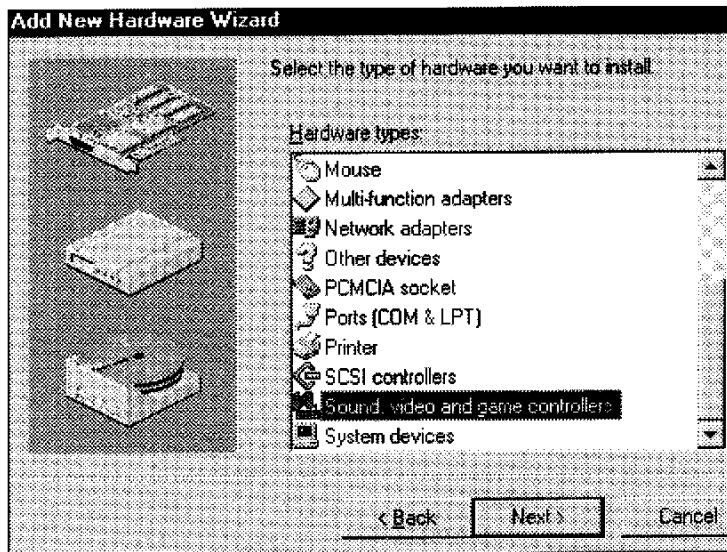


Figure B

In the window shown in **Figure B**, the user must select the “Hardware Type”. For a Pioneer LaserDisc Player that will use the MCI driver, choose “Sound, Video and Game Controllers”. After highlighting this, select “Next”.

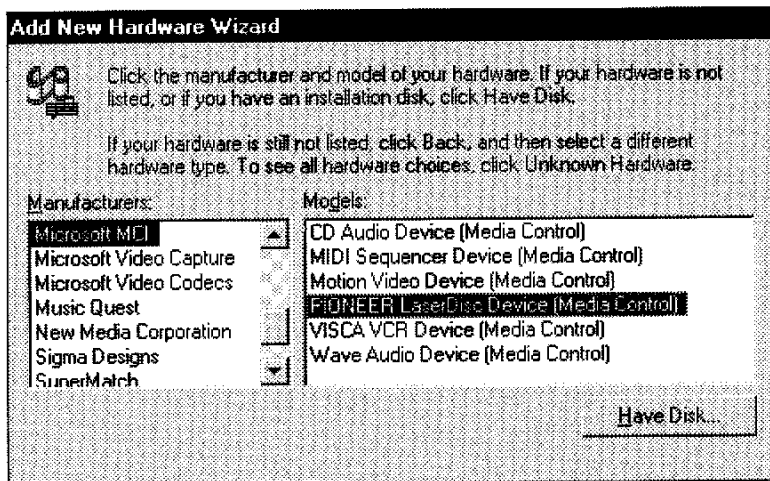


Figure C

In the window represented in **Figure C** the user will need to identify the “Manufacturer” and the “Model”. Select “Microsoft MCI” for the Manufacturer and select “PIONEER LaserDisc Device (Media Control)” for Model. Then, click on “Next”.

(Continued on next page)

Figure D, below, shows the final window. Click on the “Finish” button. After choosing “Finish”, Windows 95 will prompt the user to restart the computer. Windows 95 will launch at boot up and find PIONEER LaserDisc MCI drivers.

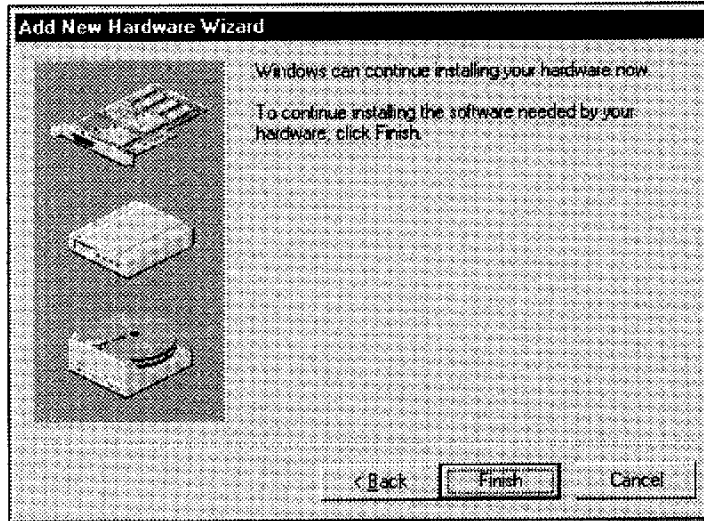


Figure D

2. MCI (Media Control Interface) Set Up

After installing the PIONEER MCI driver or changing the serial port assignment on the PC, the user **MUST** go through the Multimedia Setup. See **Figure E**, below. From the “My Computer” window, choose “Multimedia”.

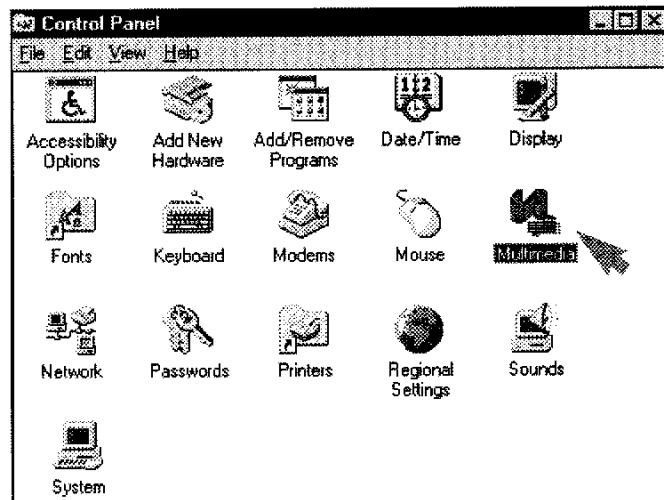


Figure E

Opening the “Multimedia” icon, will display the “Multimedia Properties” folder. The default will be the section for Audio; select the Tab for “Advanced” and see a window similar to the one in **Figure F**, on the next page.

(Continued on next page)

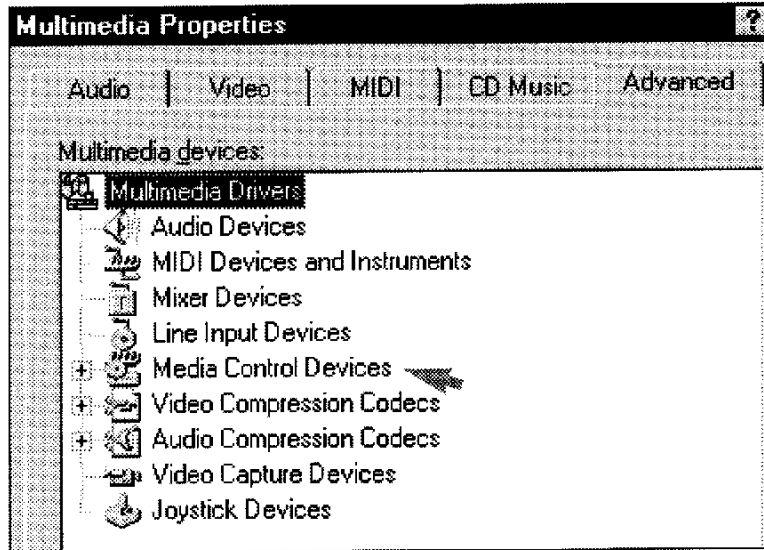


Figure F

With the mouse, click on the (+) sign next to "Media Control Devices" to see an expanded listing. See **Figure G**, below. From the expanded listing of "Media Control Devices", highlight "PIONEER LaserDisc Device (Media Control)". After highlighting this Pioneer driver, click on the "Properties" command button. It will bring up a window that looks like the one in **Figure H**, on the next page.

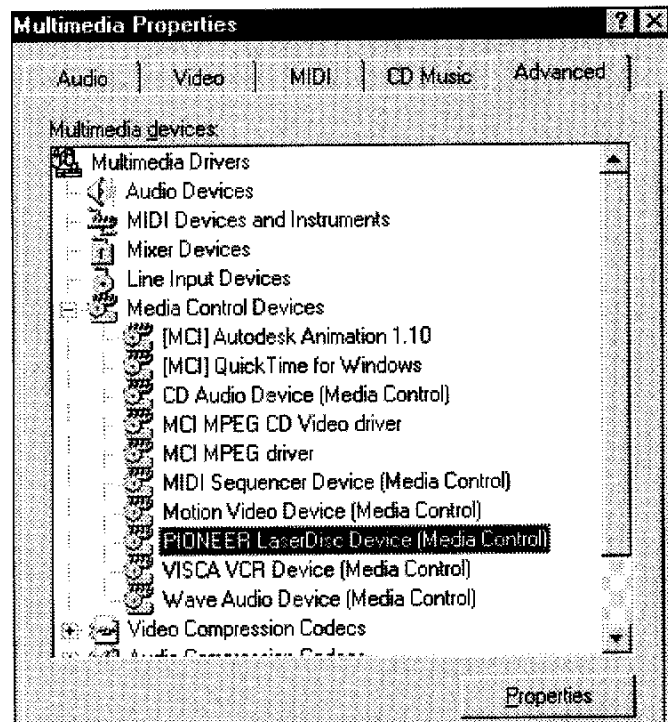


Figure G

(Continued on next page)

Figure H, shows the status of the PIONEER LaserDisc driver. To use the driver click on "Use this Media Control device". Then click on the "Settings" button.

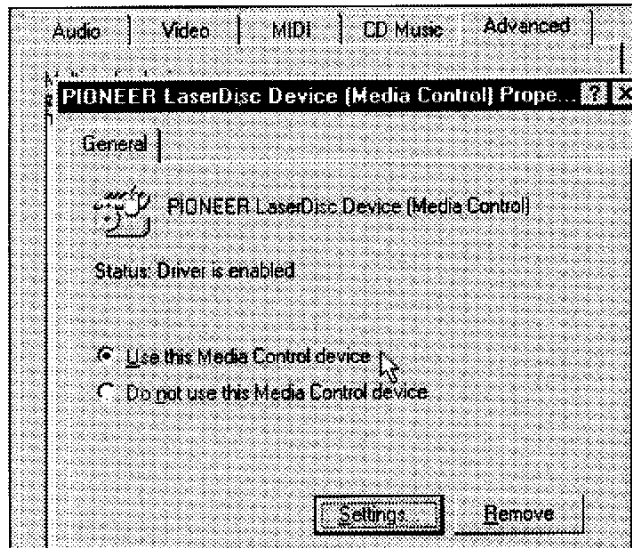


Figure H

A window for "MCI Pioneer Videodisc Player Setup" will open, similar to the one in **Figure I**, below. In "Player Setup" the user **MUST** choose the correct communications port to which the PIONEER LaserDisc player is connected. When done, click on "OK".

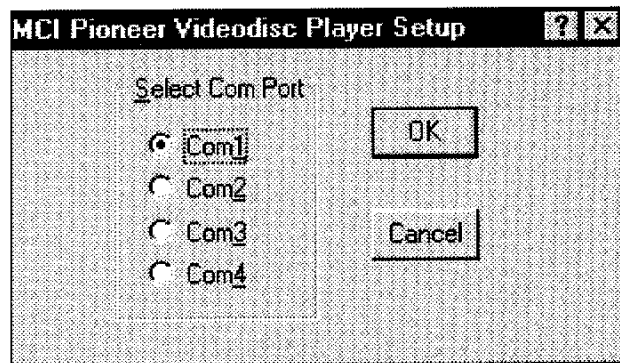


Figure I

This completes installation and setup of the Windows 95 PIONEER LaserDisc MCI driver. It is not necessary to restart Windows 95.

At this point the PIONEER LaserDisc Player is available through any program that makes MCI calls to control the player. Such as: Asymetrix Toolbook, Roger Wagner's HyperStudio, or other specific applications.