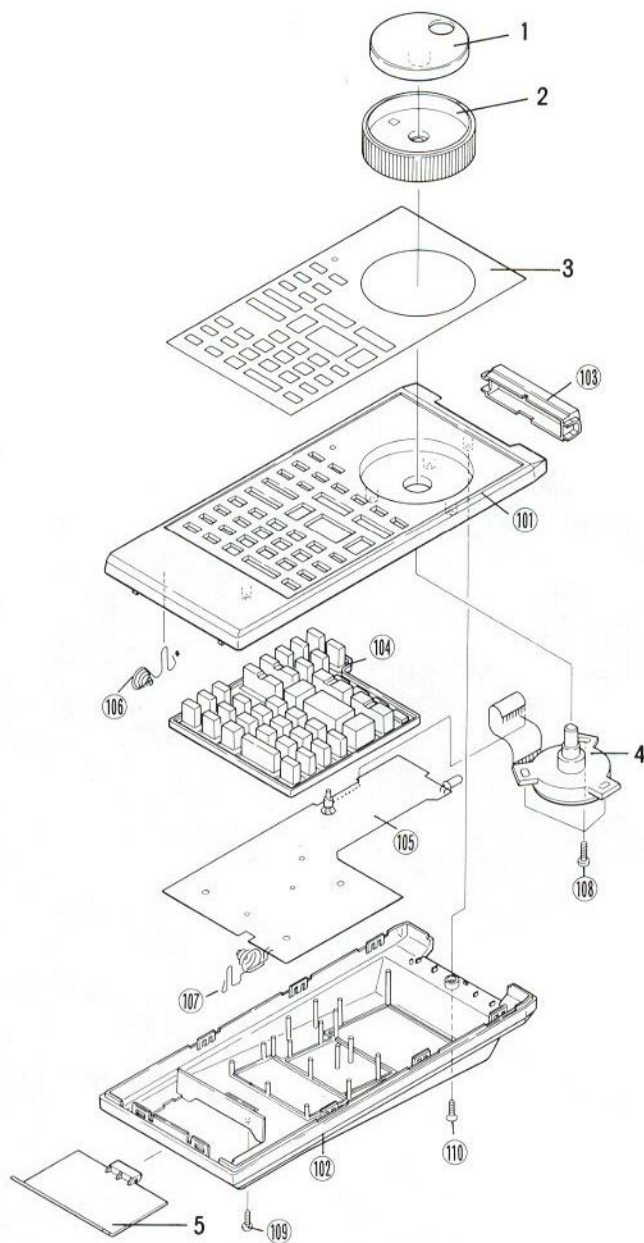


3. REMOTE CONTROL UNIT



• Parts List of Remote Control Unit (VXX1133)

Mark	No.	Part No.	Description	Mark	No.	Part No.	Description
	1.	VNK1114	Jog dial (Y)		106.		Terminal (A)
	2.	VNK1108	Shuttle ring		107.		Terminal (B)
	3.	VAH1065	Plate		108.		Screw
	4.	VSD1002	Rotary encoder		109.		Screw
	5.	VNK1133	Battery cover		110.		Screw
	101.		Case (A)				
	102.		Case (B)				
	103.		Filter				
	104.		Rubber contact				
	105.		Remote transmission assembly				

4. EXPLODED VIEWS AND PARTS LIST

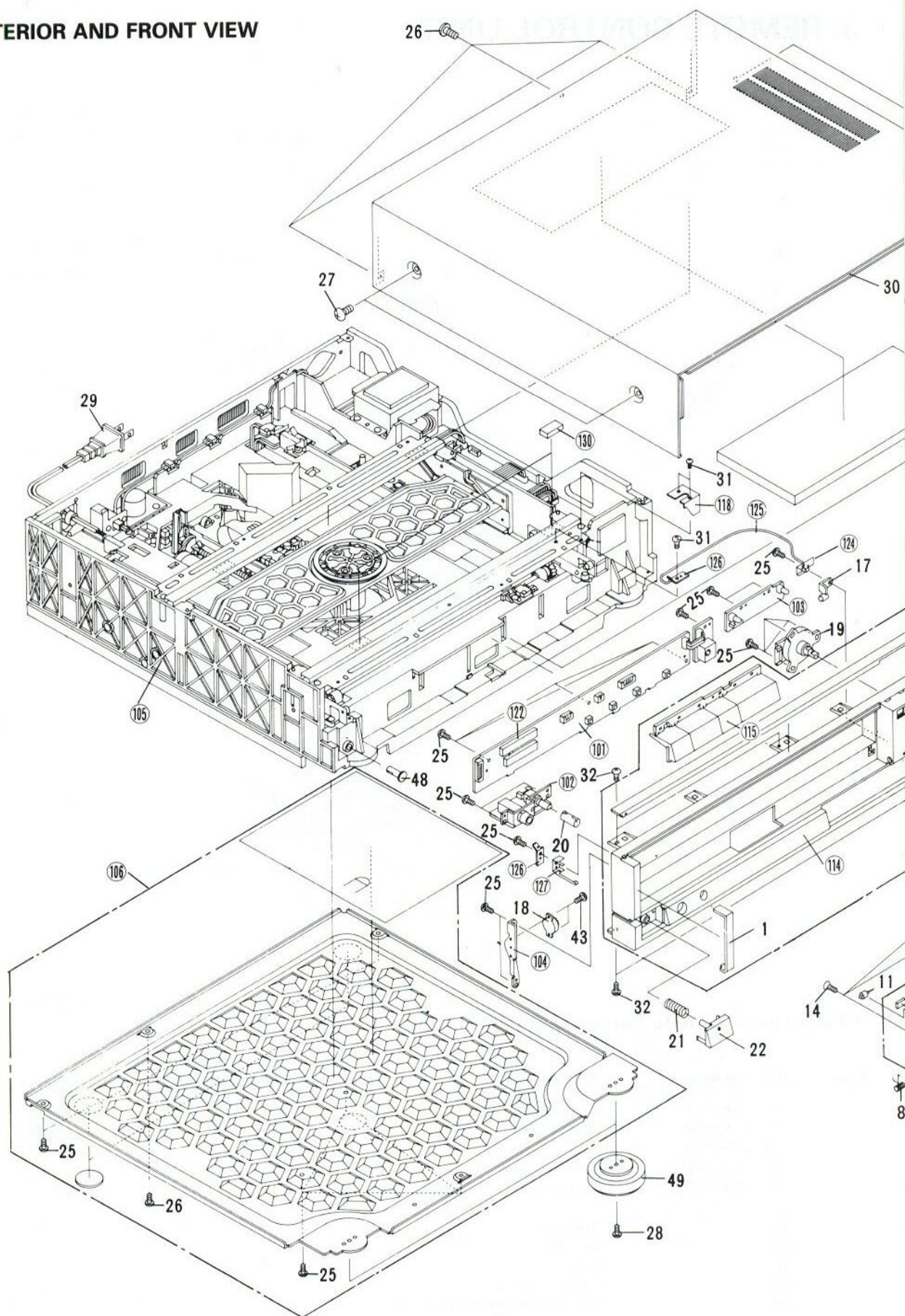
4.1 EXTERIOR AND FRONT VIEW

A

B

C

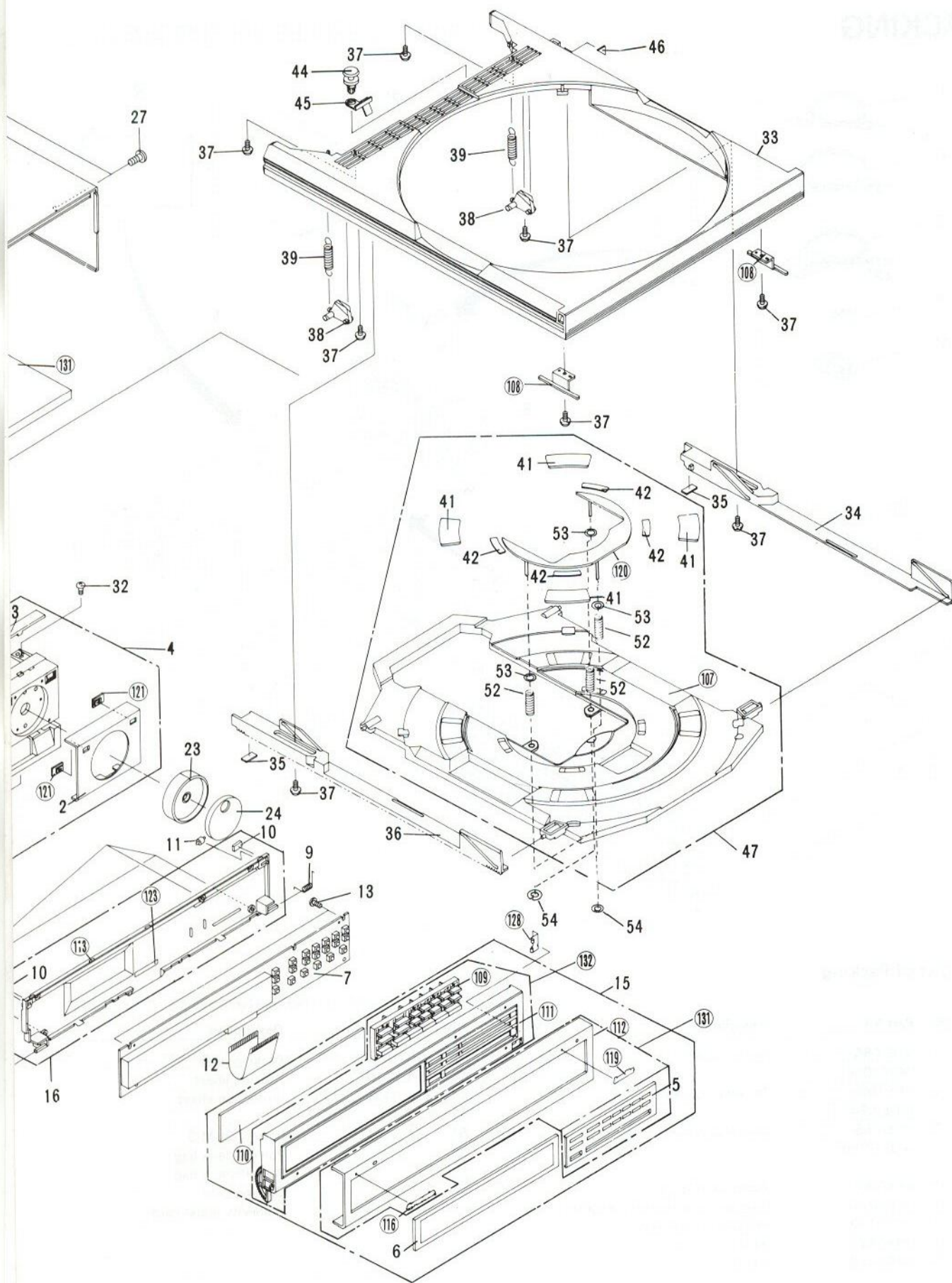
D



4

5

6



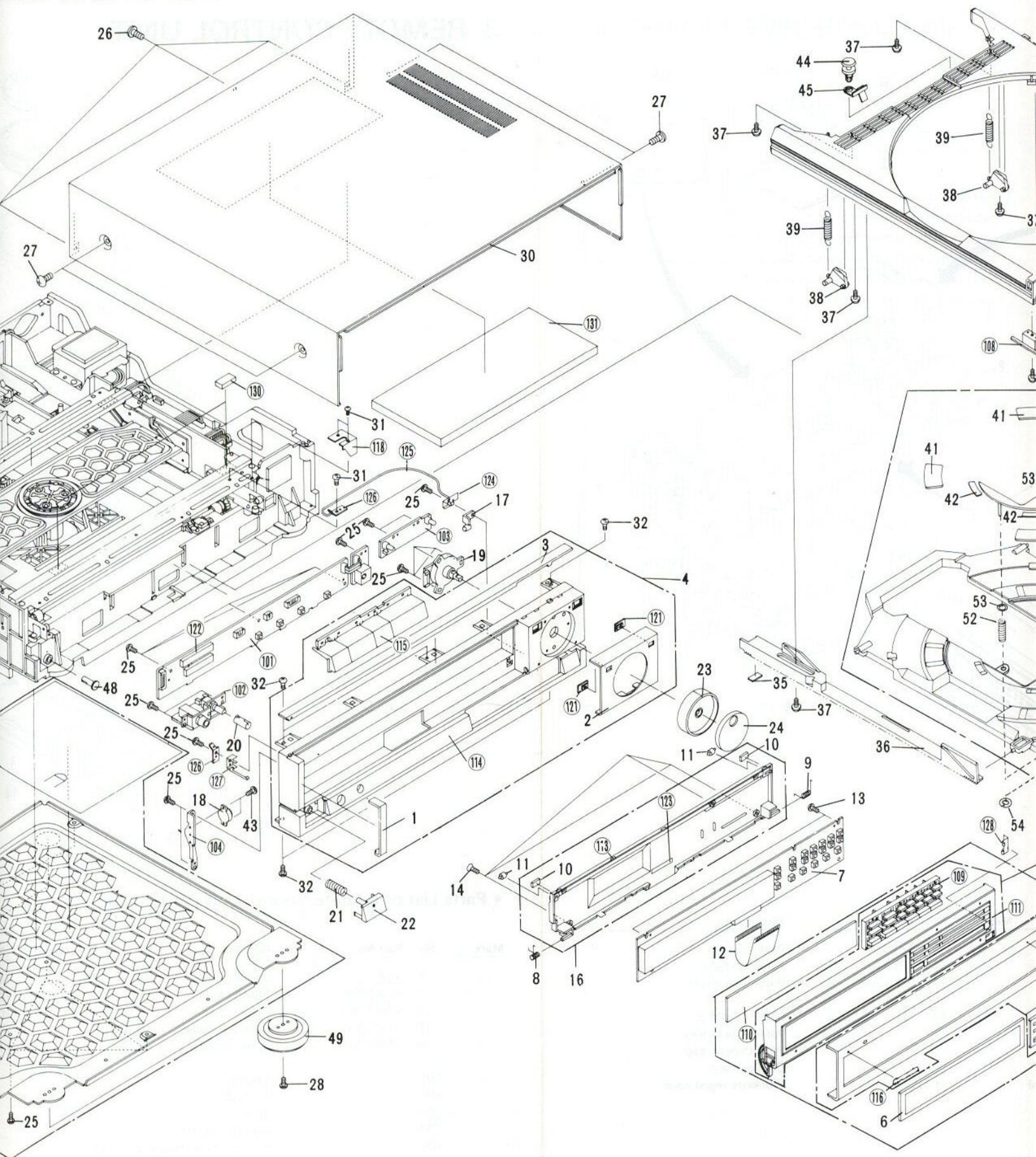
2

3

4

5

AND PARTS LIST



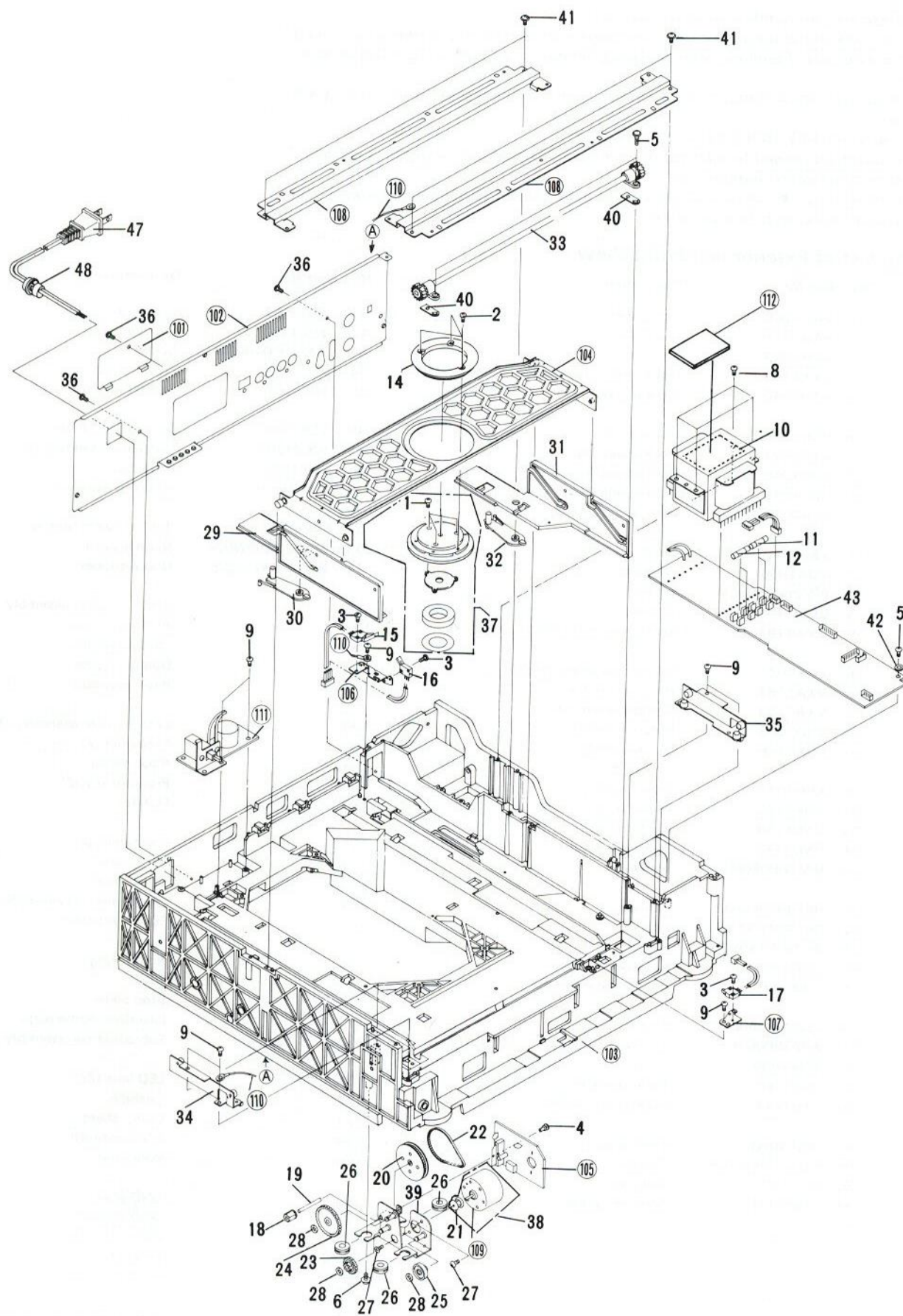
NOTES:

- Parts without part number cannot be supplied.
- The Δ mark found on some component parts indicates the importance of the safety factor of the part. Therefore, when replacing, be sure to use parts of identical designation.
- For your parts Stock Control, the fast moving items are indicated with the marks $\star\star$ and \star .
 $\star\star$ GENERALLY MOVES FASTER THAN \star
 This classification shall be adjusted by each distributor because it depends on model number, temperature, humidity, etc.
- Parts marked by "●" are not always kept in stock. Their delivery time may be longer than usual or they may be unavailable.

• Parts List of Exterior and Front View

Mark	No.	Part No.	Description	Mark	No.	Part No.	Description
	1.	VAH1068	Side panel		41.	VEC1115	Disc pad
	2.	VAH1070	Jog panel		42.	VEC1130	Disc pad (Z)
	3.	VAH1059	Top panel		43.	PMZ20P040FCU	Screw
	4.	VXX1153	Front panel assembly-S		44.	VEC1059	Plastic rivet
	5.	VAH1042	Program panel (Z)		45.	VBK1009	Switch spring
●	6.	VNK1208	FL panel (Z)		46.	VEB1045	Stop dump rubber
	7.	VYG1021	FLKY assembly		47.	VXX1201	Container assembly-S
	8.	VBH1048	Door spring (L)		48.	VNL1084	PSW cap
	9.	VBH1049	Door spring (R)		49.	VXA1094	Insulator assembly
	10.	VEB1033	Door dump rubber		52.	VBH1047	Sub container spring
	11.	VNL1042	Roller		53.	WA22N050W020	Nilon washer
	12.	VDA1050	Fuji card		54.	WT16D060D025	Nilon stopper
	13.	BPZ26P060FCU	Screw		101.		CNKY + IRAB assembly
	14.	CPZ26P100FZK	Screw		102.		HEPB assembly
	15.	VXX1197	Front door assembly-S		103.		JSDL assembly
	16.	VXX1081	Door cover assembly-S		104.		Dumper holder
	17.	VXA1184	Hinge assembly		105.		Base assembly
	18.	VXA1153	Dumper assembly		106.		Bottom plate assembly (X)
	19.	VSD1003	Rotary encoder		107.		Container (Z)
	20.	VNK1106	Volume knob		108.		Rack holder
	21.	VBH1019	Power spring		109.		Program key (Z)
	22.	VNK1105	Power button		110.		FL filter
	23.	VNK1108	Shuttle ring		111.		Front door (Z)
	24.	VNK1172	Jog dial (Z)		112.		Door panel
	25.	BPZ30P080FCUV	Screw		113.		Door cover
	26.	BBT30P060FBR	Screw		114.		Front panel (Z) assembly
	27.	BPZ40P100FBRV	Screw		115.		Function button
	28.	APZ30P140FCU	Screw		116.		Name plate
	29.	VDG1012	AC power cord		117.		...
	30.	VXX1125	Bonnet assembly-S		118.		Stop plate
	31.	BBZ30P050FCC	Screw		119.		LaserDisc name plate
	32.	APZ30P080FCU	Screw		120.		Sub container assembly
	33.	VNK1090	Carry		121.		LED lens (Z)
	34.	VNL1061	Rack gear (R)		122.		Cushion
	35.	VEB1041	Rack dump rubber		123.		Dump sheet
	36.	VNL1060	Rack gear (L)		124.		GND plate (R)
	37.	IPZ30P080FCU	Screw		125.		Wire cord
	38.	VNL1062	Stopper		126.		GND plate
	39.	VBH1021	Stopper spring		127.		GND plate (L)
	40.		128.		GND plate (D)
					129.		Cushion
					130.		Insulator cushion
					131.		Front door panel assembly
					132.		Front door base assembly

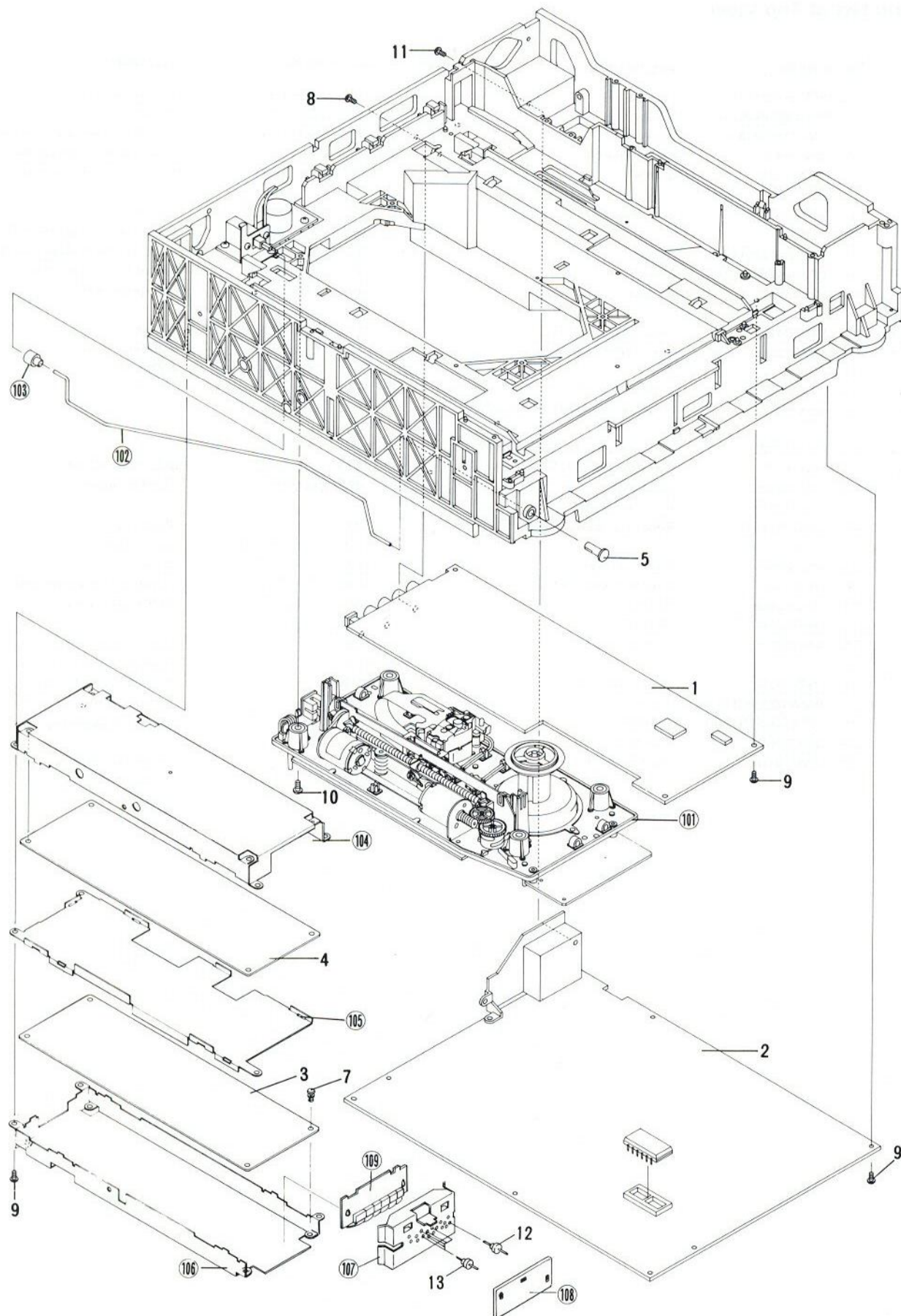
4.2 TOP VIEW



• Parts List of Top View

Mark	No.	Part No.	Description	Mark	No.	Part No.	Description
	1.	BMZ20P050FCU	Screw		31.	VNL1069	Clamp cam (R)
	2.	BPZ26P060FCU	Screw		32.	VNL1071	Rock lever (R)
	3.	BMZ20P080FCU	Screw		33.	VXA1163	Synchronized gear assembly
	4.	VEC-143	Plastic rivet		34.	VXA1161	Roller plate (L) assembly
	5.	VBA1002	Screw		35.	VXA1162	Roller plate (R) assembly
	6.	VBA1003	Screw		36.	BPZ30P080FBR	Screw
	7.		37.	VXX1156	Disc clamper assembly-S
	8.	APZ30P080FCU	Screw	★ ★	38.	VXX1084	Loading motor assembly-S
	9.	BPZ30P080FCU	Screw		39.	VXA1088	Motor base assembly
⚠ ★	10.	VTT1029	AC power transformer		40.	VEB1026	Dumper sheet
⚠ ★ ★	11.	VEK-018	Fuse (3A) (FU1, FU2)		41.	APZ30P080FCU	Screw
⚠ ★ ★	12.	VEK-022	Fuse (2A) (FU3, FU4)		42.	PEB1056	Rubber washer
	13.		43.	VYR1064	SYPS assembly
	14.	VNL1130	Clamper head		44.
★ ★	15.	VSK-010	Slide switch (TABLE/IN) (S2)		45.
★ ★	16.	VSK1003	Slide switch (TABLE/PARK) (S1)		46.
★ ★	17.	VSK-012	Slide switch (TABLE/OUT) (S3)	⚠	47.	VDG1012	AC Power Cord
	18.	VNL1020	Gear (A)	⚠	48.	CM-22C	Cord Stopper
	19.	VLL1037	Gear (A) shaft		101.		Rear cover
	20.	VXA-477	Pulley (L) assembly		102.		Rear panel (Z)
	21.	VNL1051	Motor pulley		103.		Base
	22.	VEB-125	Synchronized belt L		104.		Clamper holder assembly
	23.	VNL1010	Gear (C)		105.		LMCB assembly
	24.	VNL1064	Gear (B)		106.		Switch holder (A)
	25.	VNL1063	Tantion roller		107.		Switch holder (B)
	26.	VEB1025	Rubber bushing		108.		Reinforcement bridge
	27.	PMA26P040FCU	Screw		109.		Loading motor
	28.	WT32D060D050	Washer		110.		Earth rag assembly
	29.	VNL1068	Clamp cam (L)		111.		LFSB assembly
	30.	VNL1070	Rock lever (L)		112.		Transformer cushion

4.3 BOTTOM VIEW



• Parts List of Bottom View

Mark	No.	Part No.	Description
●	1.	VWV1048	4FSB assembly
●	2.	VWS1029	VSOP assembly
	3.	VYV1020	ADMC assembly
	4.	VYV1021	DAPC assembly
	5.	VNL1084	PSW cap
	6.
	7.	VEC-143	Plastic rivet
	8.	BPZ30P080FBR	Screw
	9.	BPZ30P080FCU	Screw
	10.	APZ40P120FCU	Screw
	11.	BBZ30P100FBR	Screw
	12.	VCG1006	Thru type capacitor (100p)
	13.	VCG1007	Thru type capacitor (1000p)
	101.		Mechanism assembly
	102.		PSW joint
	103.		Joint cap
	104.		Shield case (T)
	105.		Shield case (M)
	106.		Shield case (U)
	107.		Shield cover (S)
	108.		MEOB assembly
	109.		MEIB assembly

4.4 MECHANISM ASSEMBLY VIEW

A

B

C

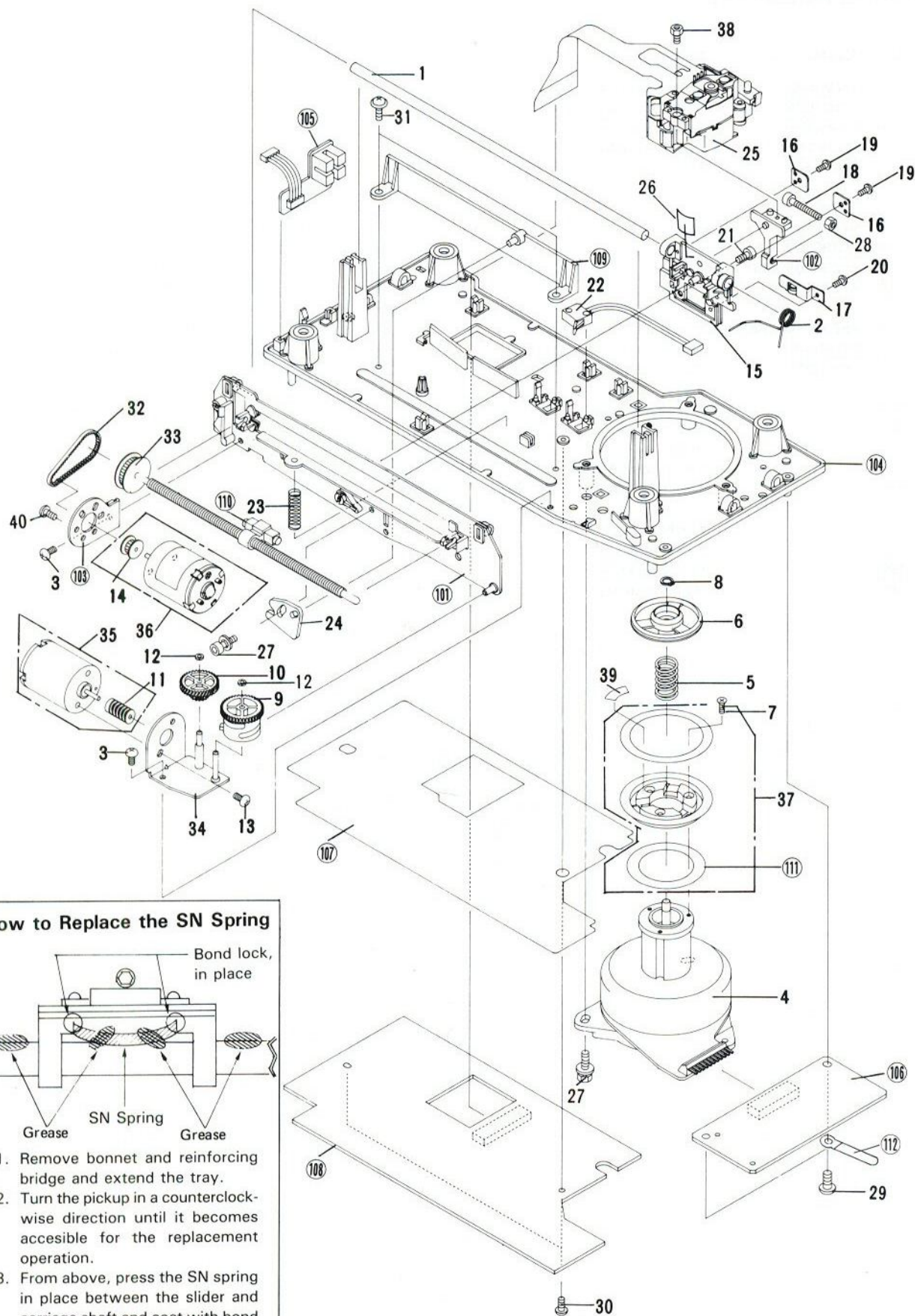
D

A

B

C

D



• Parts List of Mechanism Assembly

Mark	No.	Part No.	Description	Mark	No.	Part No.	Description
	1.	VLL1058	Carriage shaft		101.		Tilt base
	2.	VBH1040	Slider spring		102.		PU holder
	3.	PMA30P060FCU	Screw		103.		M holder
★ ★	4.	VXM1021	Spindle motor		104.		Mechanism base
	5.	VBH1024	Sentering spring		105.		TNTR assembly
	6.	VNT1003	Sentering hab		106.		BLDB assembly
	7.	CMZ20P080FCU	Screw		107.		FTS sheet
	8.	YC40FBT	Washer		108.		FTSB assembly
	9.	VNL1079	Cam gear		109.		Base plate
	10.	VNL1078	Gear		110.		Nut
	11.	VNL1085	Worm		111.		Isolation sheet
	12.	WT21D050D050	Washer		112.		Cord holder
	13.	PMA30P040FCU	Screw				
	14.	VNL1051	Motor pulley				
	15.	VNL1080	Slider				
	16.	VNE1100	Rock plate				
	17.	VXA1159	Roller assembly				
	18.	SMZ30H250FBT	Screw				
	19.	PPZ20P050FMC	Screw				
	20.	PMA20P040FCU	Screw				
	21.	SMZ30H080FBT	Screw				
★ ★	22.	VSK1003	Slide switch (SLIDER/PARK) (S4)				
	23.	VBH1022	Tilt spring				
	24.	VNL1077	Fulcrum cam				
	25.	VWY1011	Pick-up assembly				
	26.	VBK1010	SN spring				
	27.	VLL-378	Bolt 8				
	28.	NC30FMC	Nut				
	29.	IPZ30P080FCU	Screw				
	30.	BPZ30P080FCU	Screw				
	31.	PMB30P060FCU	Screw				
	32.	VEB1029	Timing belt				
	33.	VXA1129	Screw-nut assembly				
	34.	VXA1106	TL base assembly				
★ ★	35.	VXX1082	Tilt motor assembly				
★ ★	36.	VXX1155	Slider motor assembly				
	37.	VXX1071	Turntable assembly				
	38.	VLL1107	Bolt 2.6 x 6				
	39.	VEB1032	Sheet				
	40.	PMA30P050FMC	Screw				

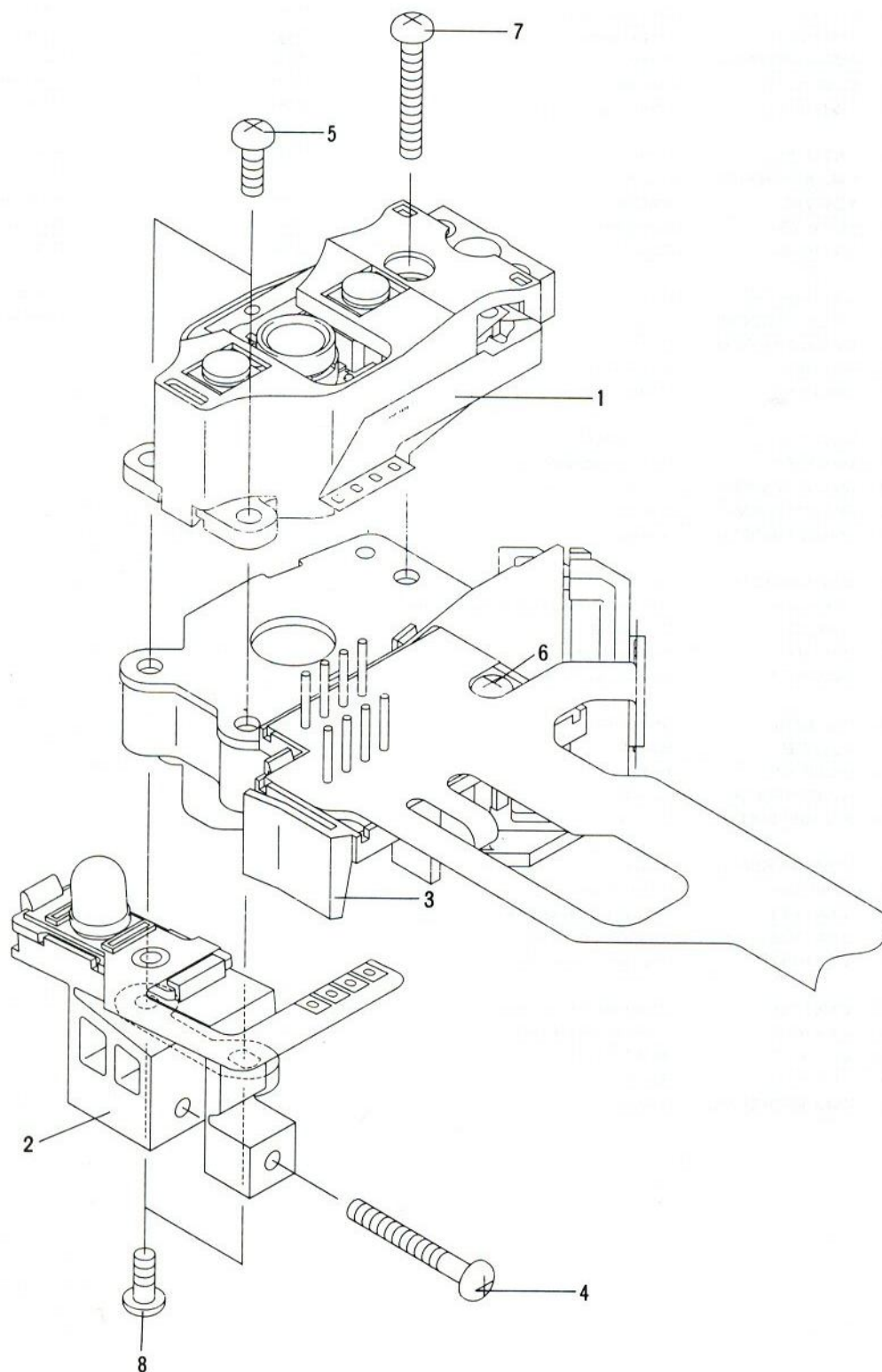
4.5 PICK-UP ASSEMBLY VIEW

A

B

C

D



A

B

C

D

• Parts List of Pick-up Assembly

Mark	No.	Part No.	Description
	1.	VXX1056	Actuator assembly
	2.	VXX1094	Sensor assembly-S
	3.	VXX1095	Pre pick-up assembly
	4.	PBZ20P160FMC	Screw
	5.	PMA20P060FMC	Screw
	6.	PMA20P080FMC	Screw
	7.	PMA20P140FMC	Screw
	8.	PMB20P050FMC	Screw