

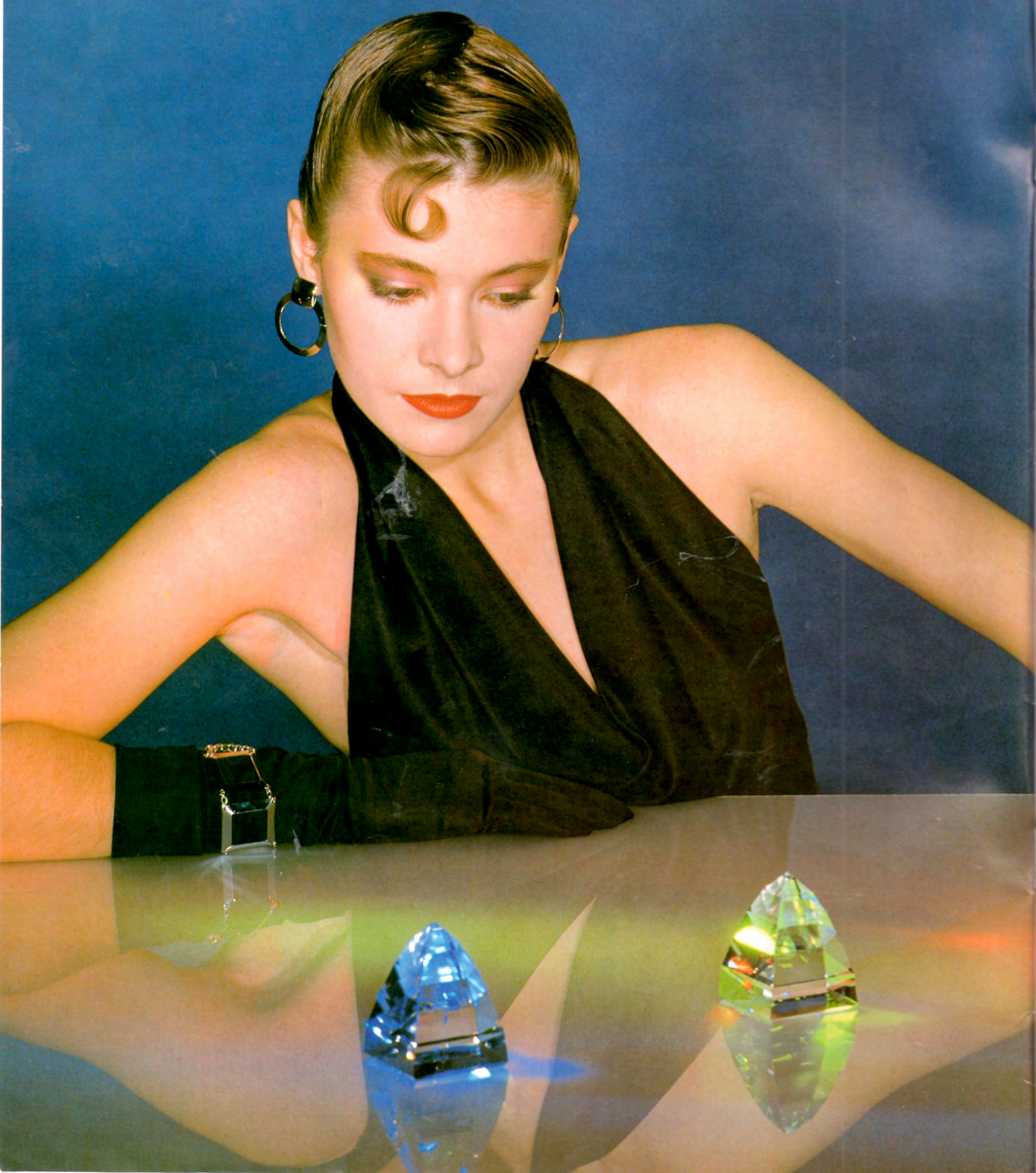


LaserDisc™ LD-700 Videodisc Player

 **PIONEER®**
The future of sound and vision.

 PIONEER®

LaserDisc™



STEREO

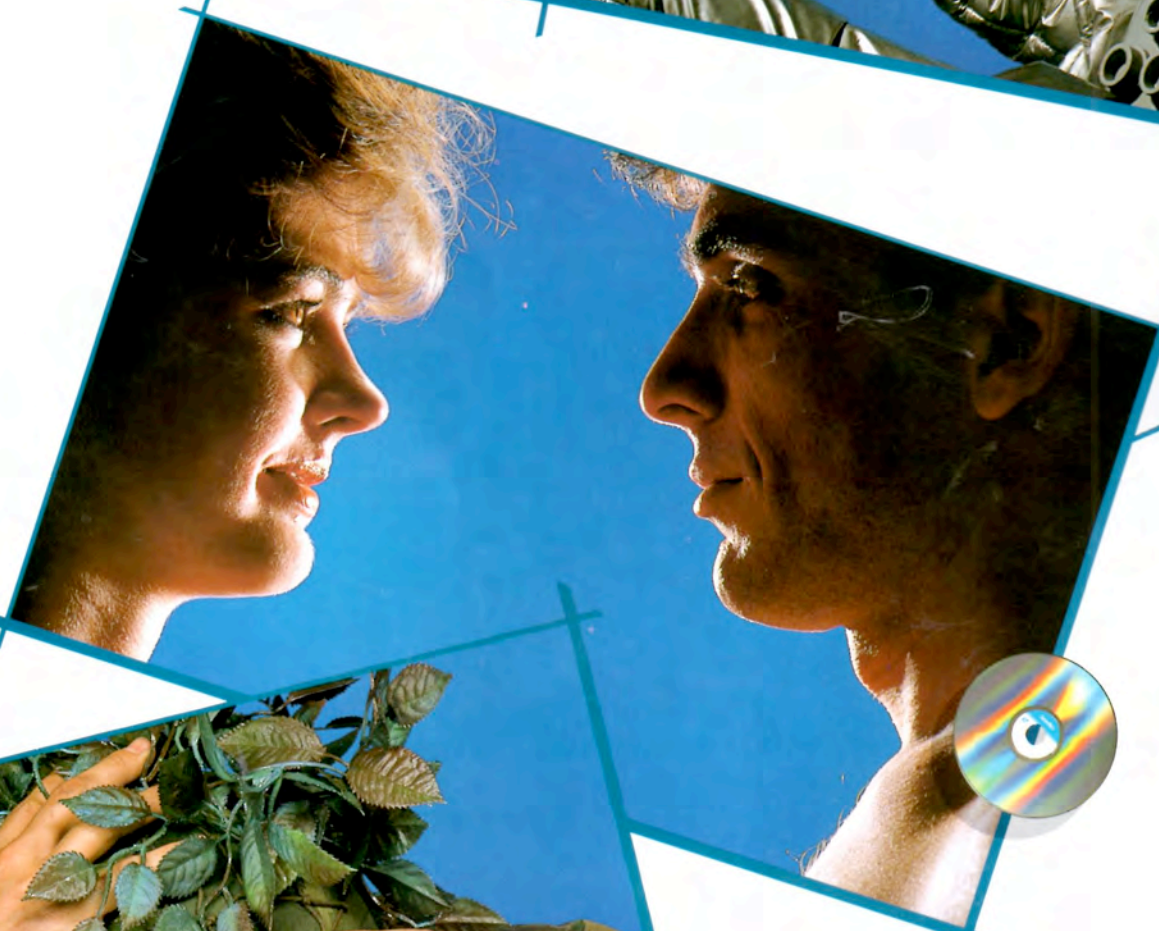
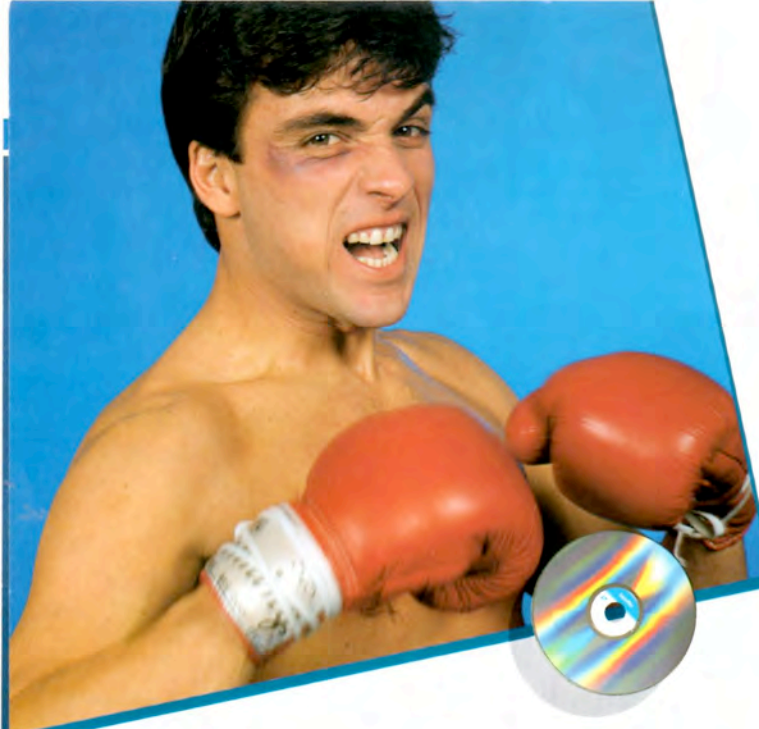
LaserDisc™

...it starts with a simple idea.

A beam of pure light from a solid-state laser. Using this miracle of high technology to bring exciting and rewarding entertainment into your living room is the simple idea behind Pioneer's LaserDisc* brand videodisc system.

And the purity of light is the reason you enjoy such amazingly good picture and sound quality with LaserDisc*, every time. A harmless and highly precise laser beam, not a needle, plays the practically indestructible disc. The high resolution and vivid colors of your program remain fresh forever.

The LD-700, Pioneer's newest and most technically advanced LaserDisc* brand videodisc player, delivers a level of video and audio fidelity in your home that no other program source, live or recorded, can match. In other words, it's simply the best idea in home entertainment ever to come along. It's LaserDisc*, from Pioneer.

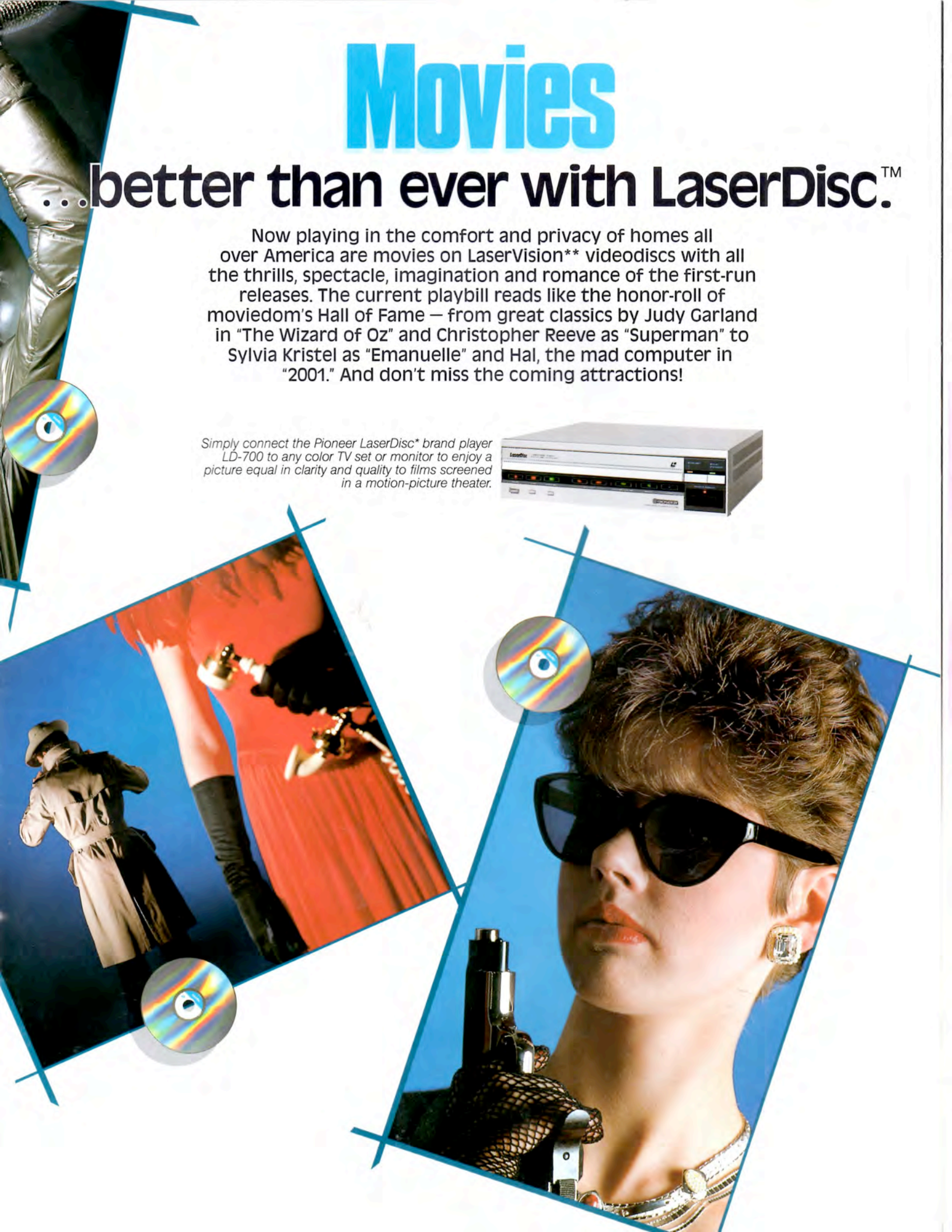


Movies

...better than ever with LaserDisc.™

Now playing in the comfort and privacy of homes all over America are movies on LaserVision** videodiscs with all the thrills, spectacle, imagination and romance of the first-run releases. The current playbill reads like the honor-roll of moviedom's Hall of Fame — from great classics by Judy Garland in "The Wizard of Oz" and Christopher Reeve as "Superman" to Sylvia Kristel as "Emanuelle" and Hal, the mad computer in "2001." And don't miss the coming attractions!

Simply connect the Pioneer LaserDisc brand player LD-700 to any color TV set or monitor to enjoy a picture equal in clarity and quality to films screened in a motion-picture theater.*



Music

...the greatest sounds in sight.

Any time is show time! Riveting, rich performances by today's hottest pop, rock and jazz stars are yours to enjoy over and over again, savoring every nuance and triumph. Opera, classical and ballet, too. The immediacy of every presentation is startling, with hi-fi stereo sound so clear and dynamic that every instrument, every word is heard exactly as the artists themselves intended. Yes, the musical entertainment on LaserVision** videodiscs is actually the greatest sound in sight. Encore!



Any high-quality stereo system can reproduce hi-fi sound from the Pioneer LD-700. The fidelity surpasses that of FM stereo and conventional audio records — reaching both the low and high extremes of human hearing without an audible trace of distortion.









Interactive

...accents on a richer life.

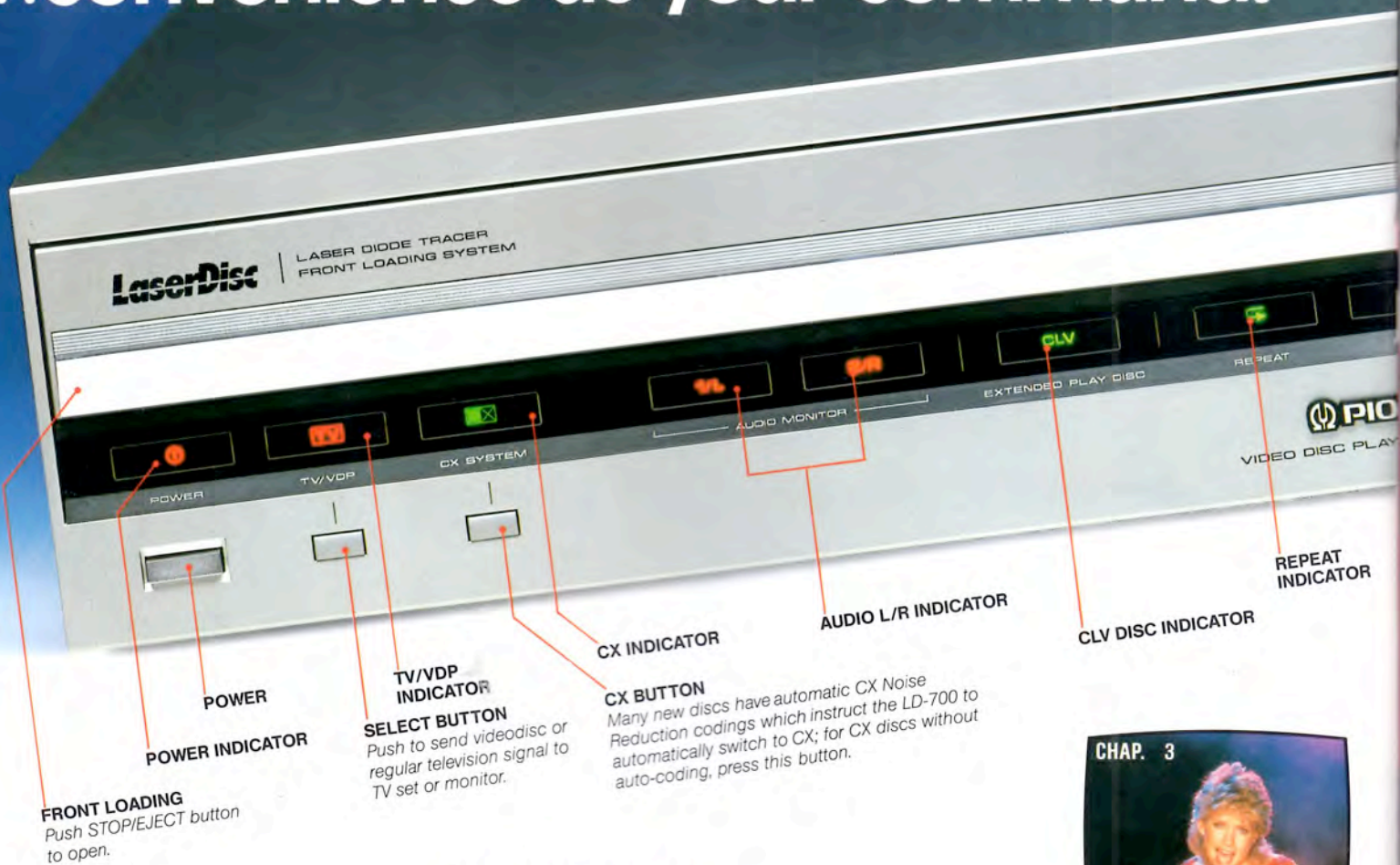
Get involved! That's the message of the many fascinating interactive videodiscs for the LaserDisc* brand system. You and the whole family are super-sleuthing the riddles of "MysteryDisc: Murder Anyone?" or winding through the fiendish labyrinths of "Maze Mania" where a push of the wrong button can eject you from your space capsule! NFL football, educational history quizzes, the "National Kidisc," master cooking lessons — just some of the life-enriching interactive uses of LaserDisc*.



The microcomputerized LD-700 and its remote-control commander put you in real-time communication with special LaserVision™ interactive discs. Thanks to quick and accurate Random Access, miracles can — and do! — happen.

LaserDisc™ LD-700

...convenience at your command.



FRONT LOADING
Push STOP/EJECT button to open.

POWER
POWER INDICATOR

TV/VDP INDICATOR
SELECT BUTTON
Push to send videodisc or regular television signal to TV set or monitor.

CX INDICATOR
CX BUTTON

Many new discs have automatic CX Noise Reduction codings which instruct the LD-700 to automatically switch to CX; for CX discs without auto-coding, press this button.

AUDIO L/R INDICATOR

CLV DISC INDICATOR

REPEAT INDICATOR

HI-FI SOUND

LaserDisc* brand players use a similar but even more sophisticated type of solid-state pickup as digital Compact Disc players — a high-precision laser beam. The actual specifications of fidelity include very low distortion, a frequency response of 20Hz to 20kHz, and an excellent signal-to-noise ratio, further improved to 70dB with the CX† Noise Reduction system.

RANDOM ACCESS

Thanks to the laser-optical (Laser-Vision**) format, no physical pressure is involved in playback. This frees the solid-state laser pickup to move almost instantly to any part of the program at your command. This freedom is called Random Access. Combined with special encodings on the discs, it gives you total control of your program.

In addition to slow/fast-motion, "freeze" and others, you have the microcomputer-assisted convenience of search and display of Chapters, Frames and Elapsed-Time references, as shown here. On-screen display of those references can be cancelled for normal viewing.



CHAPTER SEARCH

on CAV Standard-Play and CLV Extended-Play discs enables you to find a given chapter almost instantly.



FRAME SEARCH

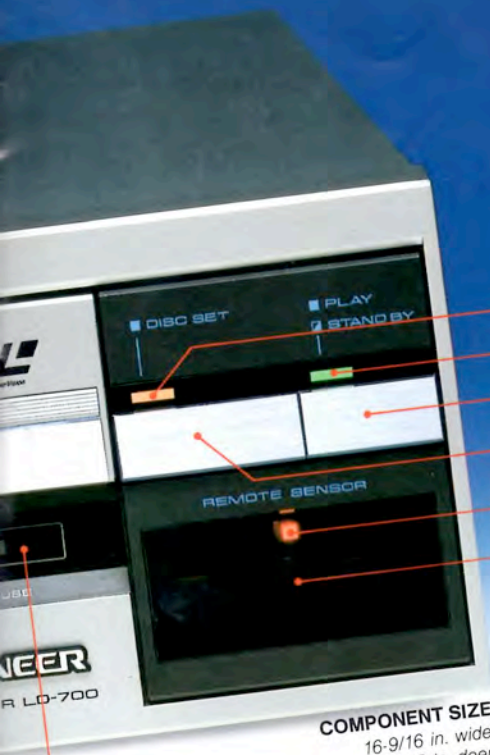
on CAV Standard-Play discs gives you rapid access to any of up to 54,000 separate frames on each side.



ELAPSED-TIME SEARCH

on certain CLV Extended-Play discs lets you move to a given time-number. It then plays the program from that point.

†CX is a trademark of CBS, Inc.



- DISC READY INDICATOR
- PLAY/STANDBY INDICATOR
- PLAY BUTTON
- STOP/EJECT BUTTON
- REMOTE CONTROL INDICATOR
- INFRARED REMOTE CONTROL RECEIVER WINDOW



SLIDE COVER
Move to hide or uncover seldom-used buttons.

COMPONENT SIZE
16-9/16 in. wide,
16-5/16 in. deep

PAUSE INDICATOR

UNLIMITED CONTROL

Soft-touch buttons on the LD-700 and/or its wireless commander unit offer Random Access facilities as well as five useful control modes, all available in forward or reverse direction:

MULTI-SPEED with variables in nine steps, from as slow as one frame every three seconds to triple the normal speed, without the least trace of "video noise" (CAV Standard-Play discs).

FAST X 3 to review any selection at three times normal speed (CAV Standard-Play discs).

SCAN for super-fast review of an entire side, or to rapidly scan through parts you don't wish to view (CAV Standard-Play and CLV Extended-Play discs).

STILL/STEP for step-by-step FREEZE-FRAME viewing, also free of "noise bars," picture shake and blurry resolution (CAV Standard-Play discs).

REPEAT offers automatic recycling and play of an entire side, or of material between any two points (e.g., Frames or Time Numbers) on the disc, up to 256 times.



MULTI-SPEED SELECTOR
Push to perform bi-directional speed change; your choice of nine modes appears on display (audio not available in fast, slow, scan, step modes):
Fast x 3; Fast x 2
Normal Speed
Slow - 1/2; Slow - 1/4; Slow - 1/8
Slow - 1/16
Step - 1; Step - 3

REPEAT
To repeat play (up to 256 times) between any two points - push once at beginning point, again at ending point. To cancel, just push CLEAR.

CLEAR KEY
Push to cancel Search, Random Access, Repeat functions or error on number buttons.

QUICK & EASY RANDOM ACCESS
Push CHAPTER (or FRAME) key first. Enter desired number, push SEARCH.

DISPLAY ON/OFF
Push to display or erase function display on video screen.

AUDIO SELECTION
Push appropriate button to select STEREO or LEFT or RIGHT channel only.

STEREO 1/L 2/R AUDIO

MULTI-SPEED + A-REPEAT B

1 2 3
4 5 6 CHAPTER
7 8 9 FRAME/TIME
0 SEARCH DISPLAY

LaserDisc

VIDEO DISC PLAYER
REMOTE CONTROL UNIT CU-700

Laser Optics

...applying the purity of light.



THE SYSTEM

You simply mount a disc, close the slide-out drawer and push the PLAY button. The low-powered laser pickup glides under the rapidly spinning disc, never touching it. It directs a tightly focused light beam onto the disc to "read" the pictures and sounds it contains.

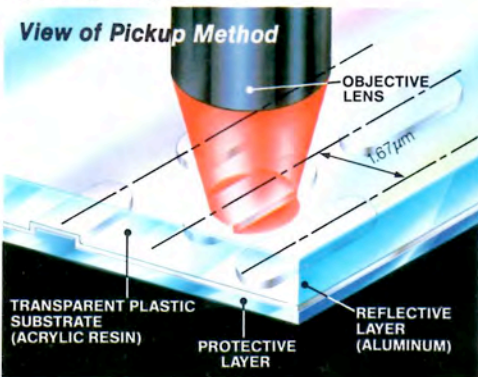
The laser-optical (Laser-Vision**) system of LaserDisc* brand players, by the way, is the first of any kind to put laser hardware directly into your hands. Thanks to this ingenious system and the on-board microcomputer in the Pioneer LaserDisc* brand LD-700 videodisc player, all other forms of permanent audio-video recording and playback have been made obsolete.



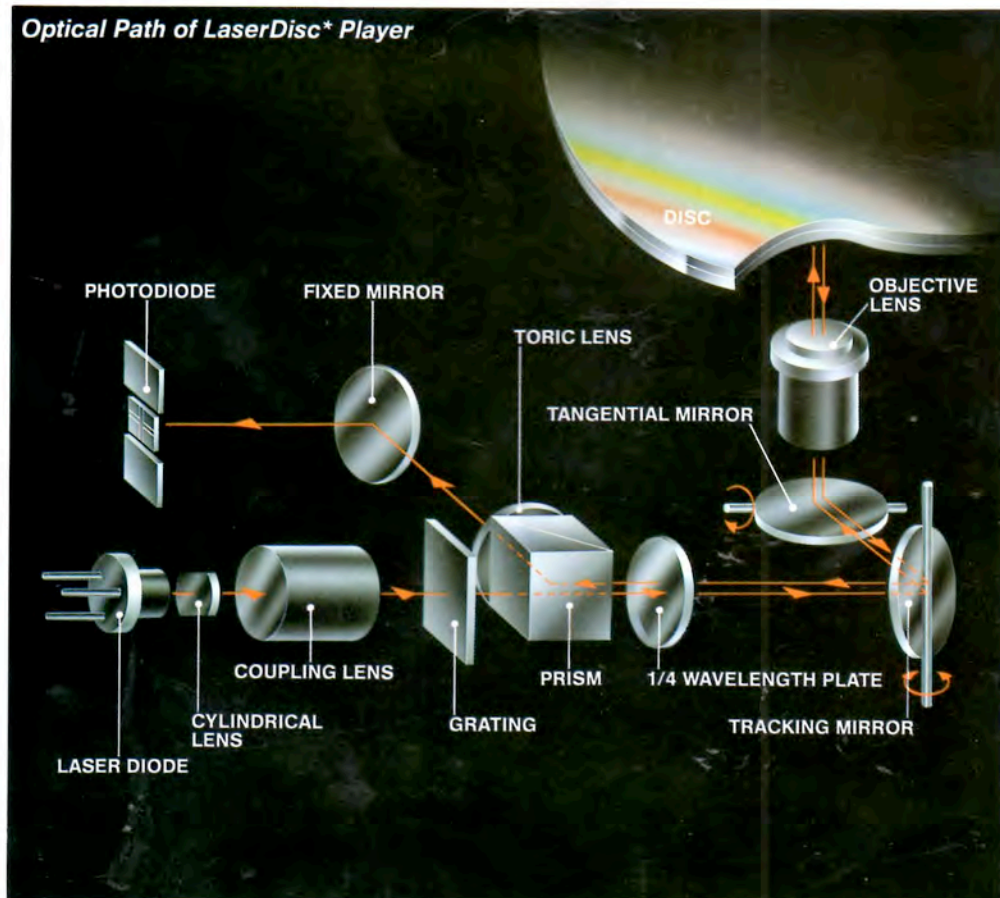


HOW IT WORKS

Through the precision optical lens-mirror system and a Pioneer-developed solid-state laser (please see illustrations), laser light is reflected from billions of microscopic indentations in the disc and is converted to high-resolution color video images and high-fidelity sound signals. By the way, a CAV Standard-Play disc can contain well over 100,000 separate and distinct pictures. And, you can call up and display each one individually with crystal-clear picture quality as long as you like.

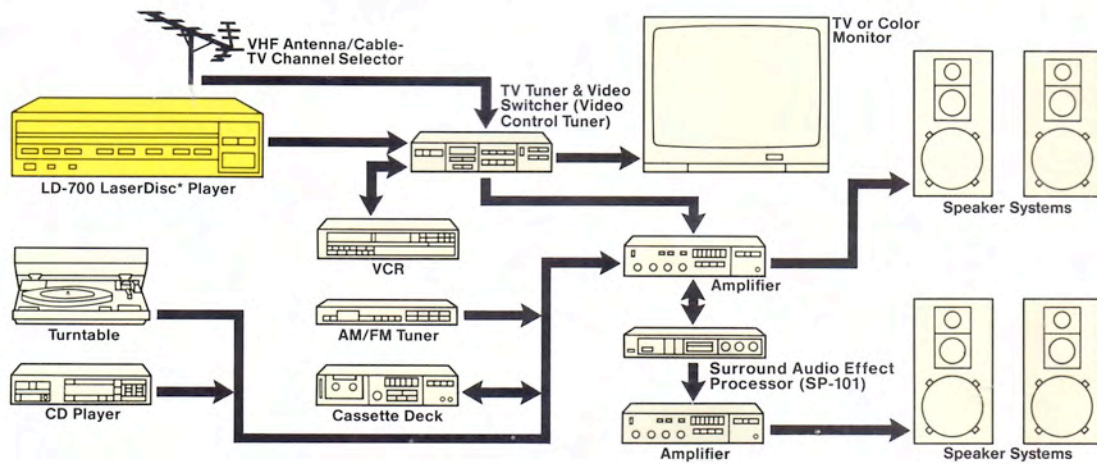


Optical Path of LaserDisc* Player





Everything in Home Entertainment



Components

...for a total video system.

A total system formed around the LaserDisc* brand LD-700 player, with other components by Pioneer, is the very definition of state-of-the-art video. These custom-made components handle the images and sound from the player and other sources — even regular cable and broadcast TV — with the highest possible fidelity.

COLOR MONITORS: Not just "better TV sets" but video display units of outstanding quality. High-tech circuitry such as a Comb Filter and an on-board microcomputer ensure razor-sharp picture resolution, vivid colors and a deep dimensional effect on the large screens.

VIDEO CONTROL TUNER: In addition to all-channel TV/CATV tuning capabilities, this highly capable unit can control your entire entertainment system. Full electronic tuning, instant memory recall, volume control and system-power switching are among the many fingertip conveniences of its infrared command unit.

OTHER CUSTOM COMPONENTS: We've applied our best audio technology in making stereo amplifiers, AM/FM stereo tuners, audio cassette recorders, special sound processors and speaker systems to match the appearance and high-quality performance of the LaserDisc* brand player LD-700 and other video components. Special racks to house your entire system are also available.



The LD-700 is also available in black.

Specifications

Item	LD-700
General	
System and disc specs	Comply with Philips-MCA specifications
Disc	30cm disc
Maximum playing time	Standard-Play (CAV) disc: 60 minutes/both side Extended-Play (CLV) disc: 120 minutes/both side
Spindle motor revolutions	Standard-Play (CAV) disc: 1,800 rpm Extended-Play (CLV) disc: 1,800 ~ 600 rpm
Power requirements	AC 120V, 50/60Hz
Weight	27 lbs 5 oz (12.4kg)
Dimensions (W x H x D)	16-9/16 x 4-3/4 x 16-5/16 in. (420 x 120 x 415mm)
Allowable temperature range for accurate operation	41°F ~ 95°F (5°C ~ 35°C)
Allowable humidity range for accurate operation	0 ~ 90%
VHF Output (NTSC specifications)	
Channel	Channel 3 or 4 (switchable)
Terminal	F-type jack (75 ohms, unbalanced)
Video Characteristics	
Output level	1Vp-p nominal (sync. negative, 75 ohms)
Output terminal	Pin jack
Audio Characteristics	
Output	Stereo or two individual channels (1/left, 2/right)
Output level	650mV rms (100% mod. 50k ohms)
Output terminals	Stereo pin jacks
Furnished Accessories	
I/O port (for control through out-board equipment)	

Functions

Item	LD-700	
	CAV	CLV
Disc type	CAV	CLV
Play (Normal play mode with sound)	Yes	Yes
Pause	Yes	Yes
Scan forward/reverse	Yes	Yes
Fast forward/reverse (Three times normal speed)	Yes	No
Multi-speed (forward/reverse: 9-step variation)	Yes	No
Still; step forward/reverse	Yes	No
Repeat between two chosen points	Yes	Yes
Multi-speed display	Yes	No
Frame number display	Yes	No
Time number display	No	Yes
Chapter number display	Yes*	Yes*
Frame number search	Yes	No
Time number search	No	Yes
Chapter number search	Yes*	Yes*
Chapter stop	Yes*	Yes*
(All functions above can be controlled by remote control unit.)		
Automatic picture stop	Yes**	No
CX noise reduction	Yes***	Yes***
Auto repeat/reject selection	Yes	Yes
* only for discs recorded with chapter numbers		
** only for discs recorded with picture stop codes		
*** only for discs with CX mark		

Note: Specifications and design subject to modification without notice.

LaserDisc™

*LaserDisc is a trademark of Pioneer Electronic Corporation.



LaserVision

**LaserVision is the trademark of the LaserVision Associates. All products bearing this mark are compatible with the laser-optical system.

PIONEER®

PIONEER VIDEO, INC.
200 West Grand Avenue, Montvale, N.J. 07645, U.S.A.
PIONEER ELECTRONIC CORPORATION
4-1, Meguro 1-chome, Meguro-ku, Tokyo 153, Japan