

SECTION 4
PRINTED WIRING BOARDS AND SCHEMATIC DIAGRAM

THIS NOTE IS COMMON FOR PRINTED WIRING BOARDS AND SCHEMATIC DIAGRAMS. (In addition to this, the necessary note is printed in each block.)

For printed wiring boards:

- — indicates a lead wire mounted on the component side.
- — indicates a lead wire mounted on the printed side.
- ▨ — Pattern from the side which enables seeing.
- (with number) — Circled numbers refer to waveforms.

For schematic diagram:

- Caution when replacing chip parts. New parts must be attached after removal of chip. Be careful not to heat the minus side of tantalum capacitor, because it is damaged by the heat.
- All resistors are in ohms, 1/4W (Chip resistors: 1/10W) unless otherwise noted. kΩ: 1000Ω, MΩ: 1000kΩ.
- All capacitors are in μF unless otherwise noted. pF: μF 50V or less are not indicated except for electrolytics and tantalums.
- All variable and adjustable resistors have characteristic curve B, unless otherwise noted.
- ▭ (with number) — nonflammable resistor.
- ▭ (with number) — fusible resistor.
- ▭ (with number) — panel designation.
- ▭ (with number) — internal component.
- ▭ (with number) — adjustment for repair.*
- B+ line.*
- B- line.*
- * Voltages are dc between measurement points and ground unless otherwise noted.*
- Readings are taken with a color-bar signal playback.
- Readings are taken with a digital multimeter (DC10MΩ).
- Voltage variations may be noted due to normal production tolerances.
- : IN/OUT direction of B line (+, -).*
- Circled numbers refer to waveforms.*

When indicating parts by reference number, please include the board name.

Note: The components identified by mark **A** or dotted line with mark **A** are critical for safety. Replace only with part number specified.

*: indicated by the color red.

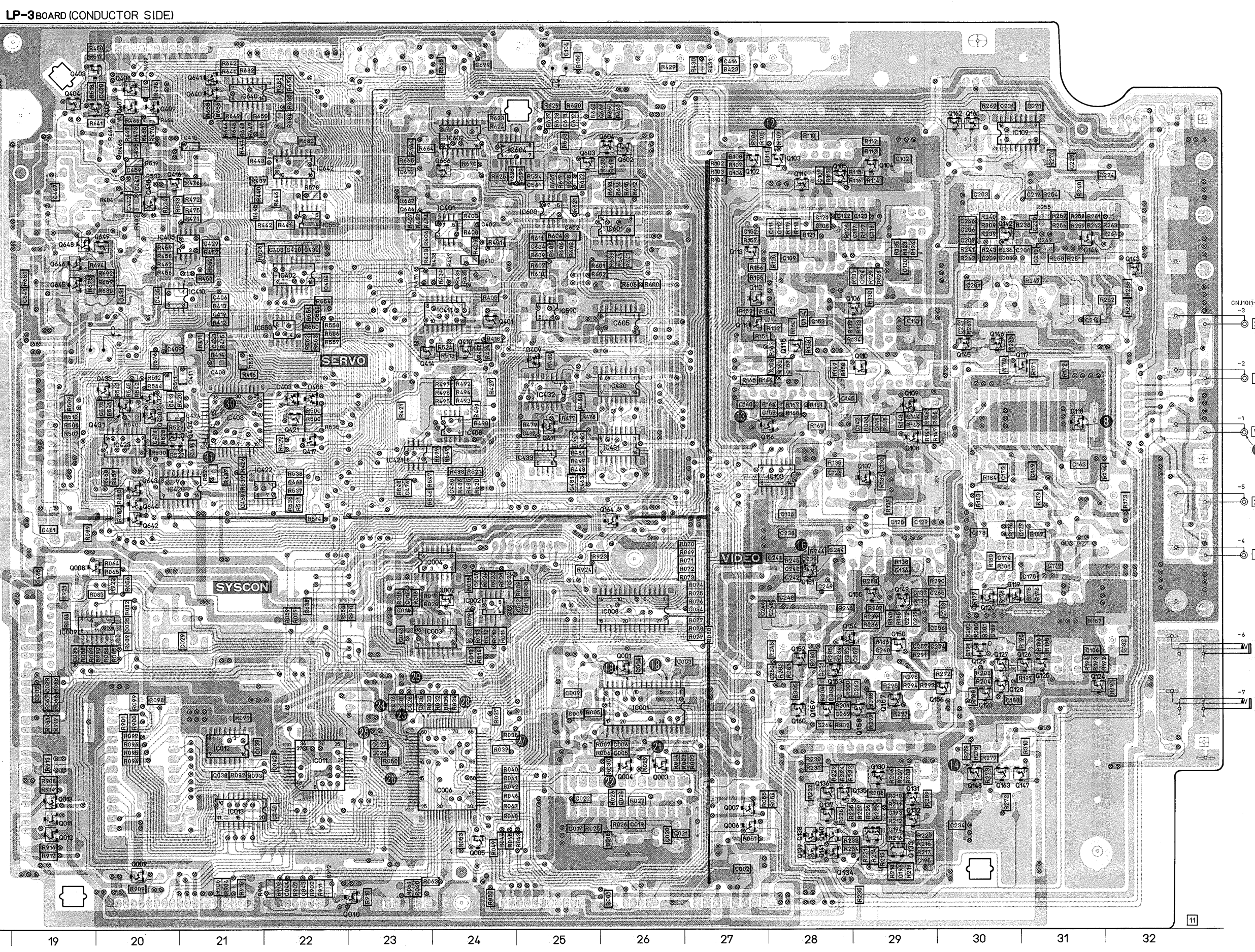
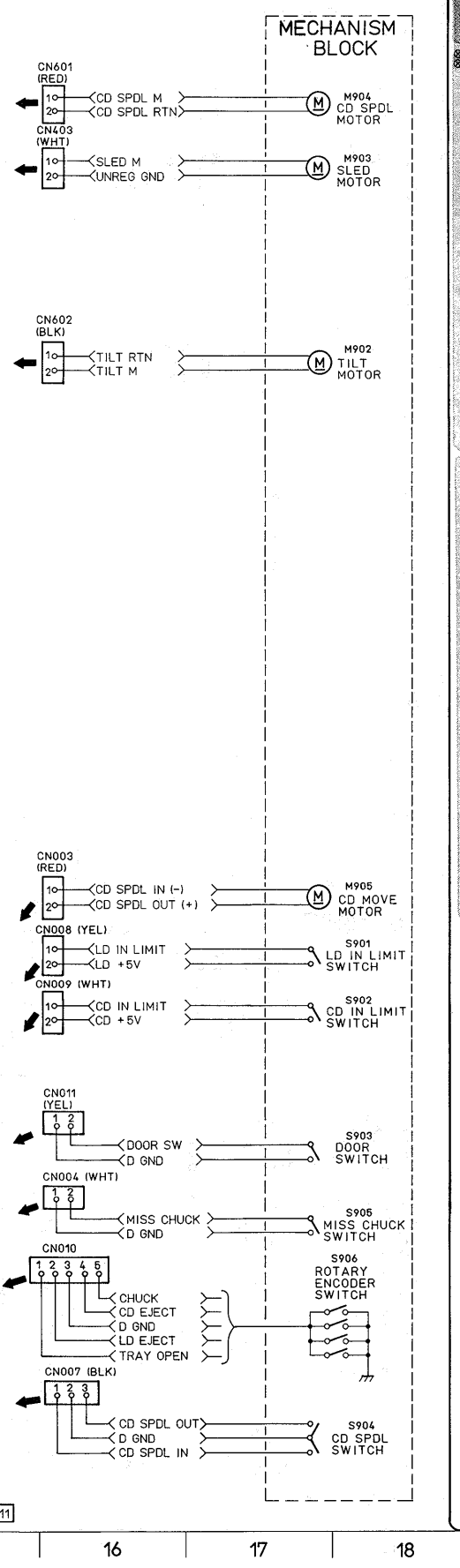
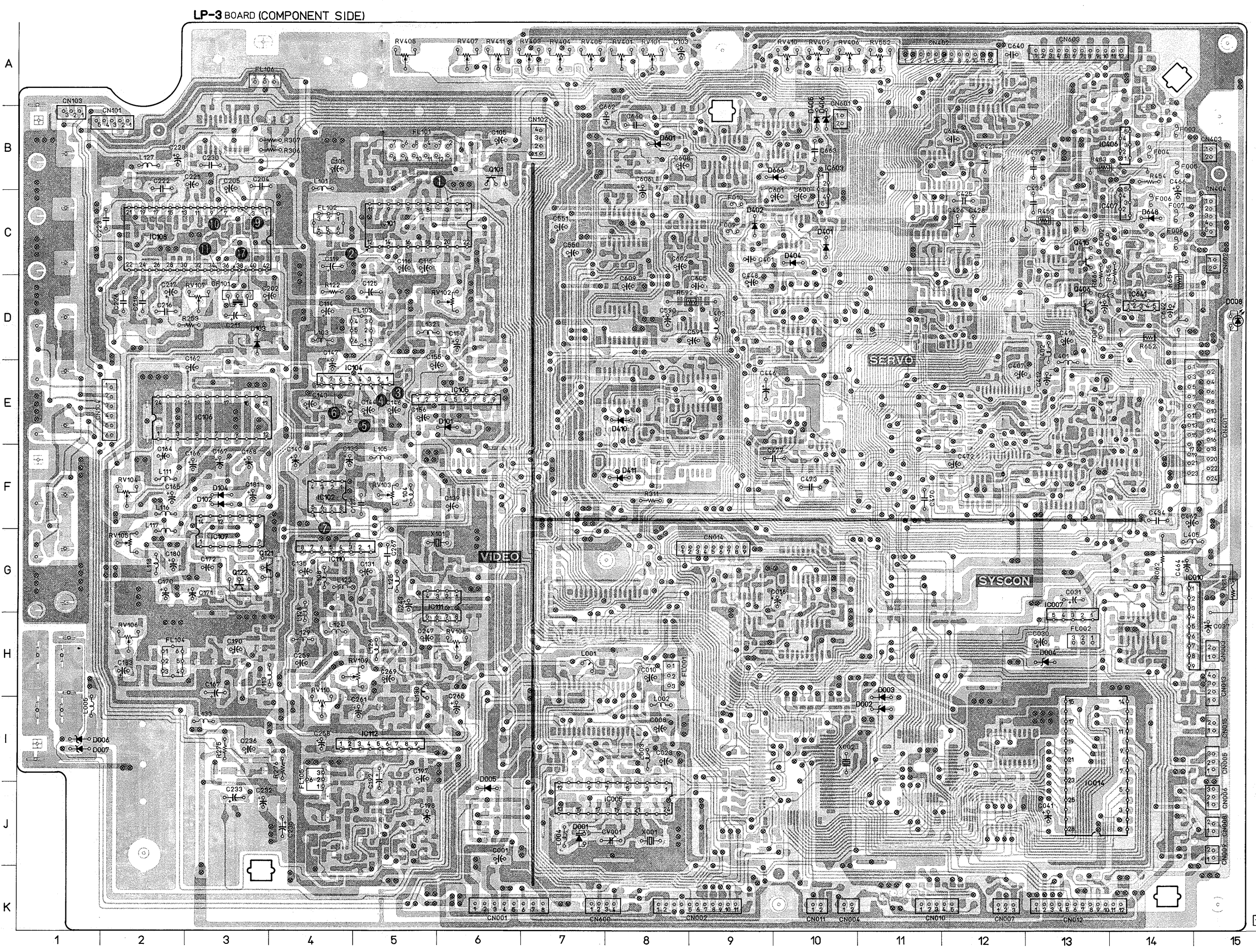
**LP-3 (VIDEO SIGNAL PROCESSING)
AND
CL-10 (EURO CONNECTOR)
PRINTED WIRING BOARDS**

— Ref. No. LP-3 and CL-10 BOARDS: 1,000 series —

Note:
• : Through hole.
• : Pattern of the rear side.

Caution:
Pattern face side: Parts on the pattern face side seen from (Conductor Side) the pattern face are indicated.
Parts face side: Parts on the parts face side seen from (Component Side) the parts face are indicated.

LP-3 BOARD		IC001 I-26		Q001 H-26		Q158 I-29	
CN001 K-6	IC001 I-26	Q001 H-26	Q158 I-29				
CN002 K-9	IC002 H-24	Q002 H-24	Q159 I-28				
CN003 H-15	IC003 H-24	Q003 J-26	Q160 I-28				
CN004 K-10	IC004 G-24	Q004 G-24	Q161 B-30				
CN005 I-15	IC005 J-8	Q005 J-24	Q162 B-30				
CN006 J-15	IC006 J-24	Q006 J-27	Q163 J-30				
CN007 K-12	IC007 H-13	Q007 J-27	Q164 G-26				
CN008 J-15	IC008 H-26	Q008 G-19	Q401 D-24				
CN009 J-15	IC009 H-19	Q009 K-20	Q403 A-19				
CN010 K-11	IC010 H-15	Q010 K-23	Q404 B-19				
CN011 K-10	IC011 J-22	Q011 J-19	Q405 B-19				
CN012 K-13	IC012 I-21	Q012 J-19	Q406 D-13				
CN013 H-15	IC013 J-21	Q013 J-19	Q407 B-20				
CN014 G-9	IC014 I-13	Q101 B-6	Q408 A-20				
CN015 I-15	IC015 C-5	Q102 B-27	Q409 B-20				
CN101 B-2	IC102 F-4	Q103 B-28	Q410 E-24				
CN102 B-7	IC103 F-28	Q104 B-29	Q411 E-25				
CN103 B-1	IC104 E-4	Q105 C-28	Q414 E-23				
CN104 E-2	IC105 E-6	Q106 D-29	Q415 C-13				
CN401 E-15	IC106 E-3	Q107 F-29	Q416 C-20				
CN402 A-12	IC107 G-3	Q108 F-29	Q417 F-22				
CN403 B-15	IC108 C-3	Q109 E-29	Q418 C-20				
CN404 C-15	IC109 B-30	Q110 E-29	Q421 E-20				
CN600 K-7	IC110 G-4	Q111 D-27	Q430 E-20				
CN601 B-10	IC111 G-6	Q112 D-27	Q431 E-20				
CN602 C-15	IC112 I-5	Q113 C-27	Q432 E-20				
CN603 A-13	IC401 C-24	Q114 C-28	Q433 E-20				
	IC402 D-22	Q115 E-28	Q434 F-20				
	IC403 E-21	Q116 E-28	Q602 B-26				
	IC405 C-21	Q117 E-31	Q603 B-25				
	IC406 B-14	Q118 E-31	Q604 B-26				
	IC407 C-14	Q119 H-30	Q640 B-21				
	IC408 E-24	Q120 H-30	Q641 A-21				
	IC410 D-20	Q121 G-3	Q642 G-20				
	IC411 D-24	Q122 G-3	Q643 F-20				
	IC420 F-20	Q123 I-30	Q644 F-20				
	IC421 F-23	Q124 I-31	Q645 D-19				
	IC422 F-22	Q125 H-31	Q646 C-19				
	IC423 F-20	Q126 H-31	Q648 D-19				
	IC430 E-26	Q127 H-30	Q649 C-20				
	IC431 F-26	Q128 I-30	Q666 B-24				
	IC432 E-25	Q129 H-30					
	IC433 F-25	Q130 J-29	RV101 A-8				
	IC550 D-22	Q131 J-29	RV102 D-6				
	IC552 C-22	Q132 J-29	RV103 F-5				
	IC590 D-25	Q133 K-29	RV104 F-2				
	IC600 C-25	Q134 J-29	RV105 G-2				
	IC601 C-26	Q135 J-28	RV106 H-2				
	IC602 B-24	Q136 J-28	RV107 D-3				
	IC603 B-10	Q137 J-28	RV108 H-6				
	IC604 B-26	Q138 J-28	RV109 B-2				
	IC605 D-26	Q139 K-28	RV110 I-4				
	IC640 B-21	Q140 J-28	RV401 A-8				
	IC641 D-14	Q141 K-28	RV403 A-7				
	IC642 B-22	Q142 C-30	RV404 A-7				
		Q143 D-32	RV405 A-7				
		Q144 C-31	RV406 A-10				
		Q145 E-30	RV407 A-6				
		Q146 E-30	RV408 A-5				
		Q147 J-31	RV409 A-10				
		Q148 J-30	RV410 A-10				
		Q149 H-29	RV411 A-6				
		Q150 H-29	RV552 A-11				
		Q151 G-28					
		Q152 I-28					
		Q153 H-28					
		Q154 H-28					
		Q155 H-29					
		Q156 I-30					
		Q157 I-29					



LP-3 (SERVO) PRINTED WIRING BOARD

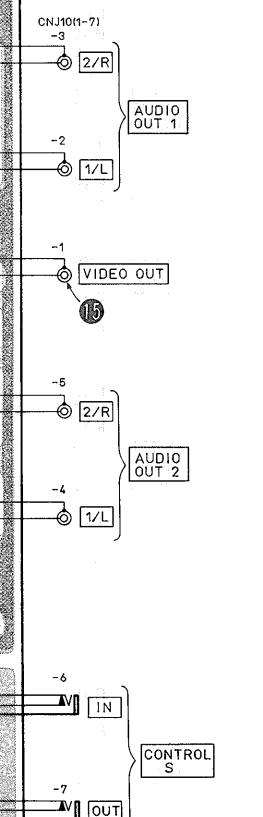
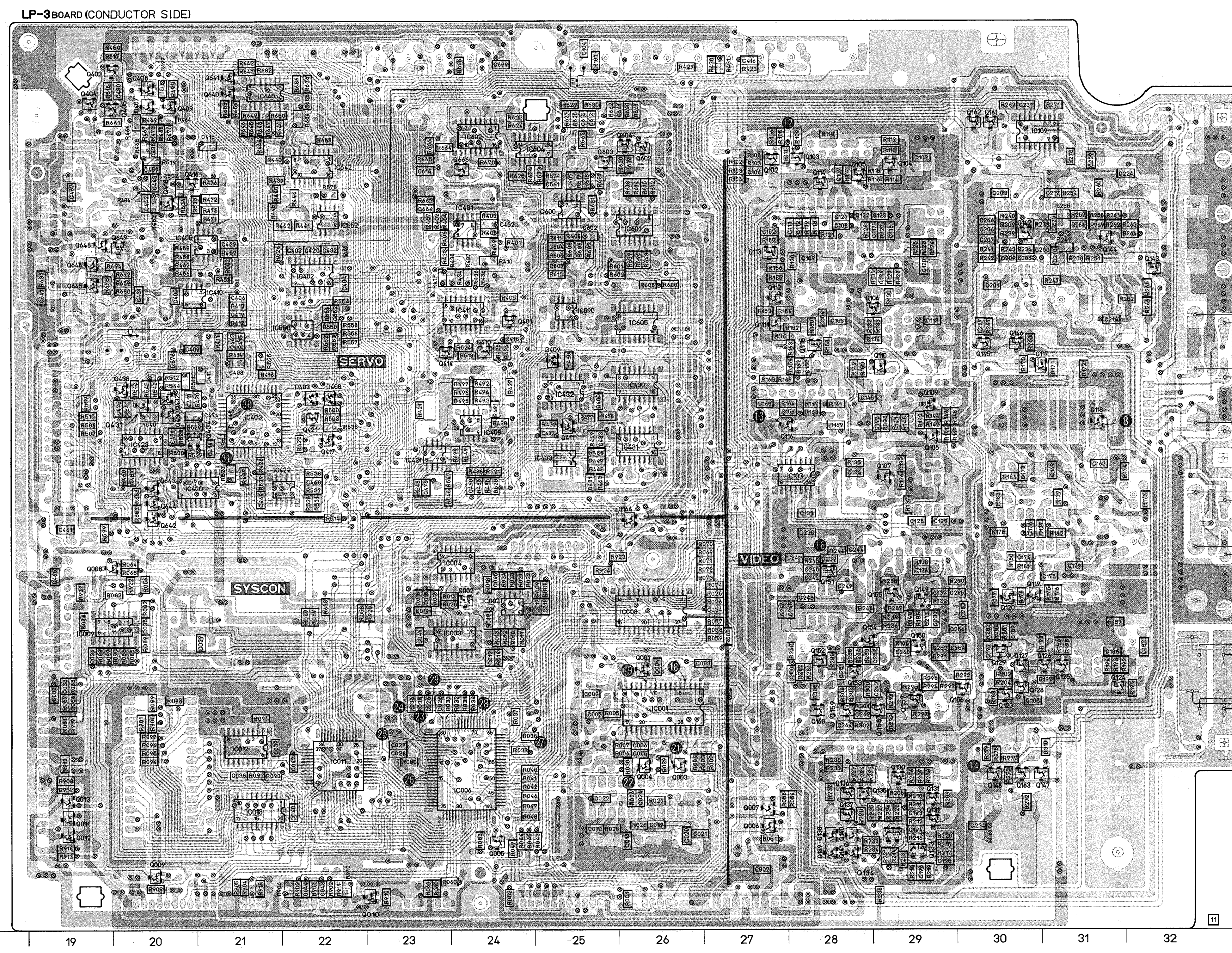
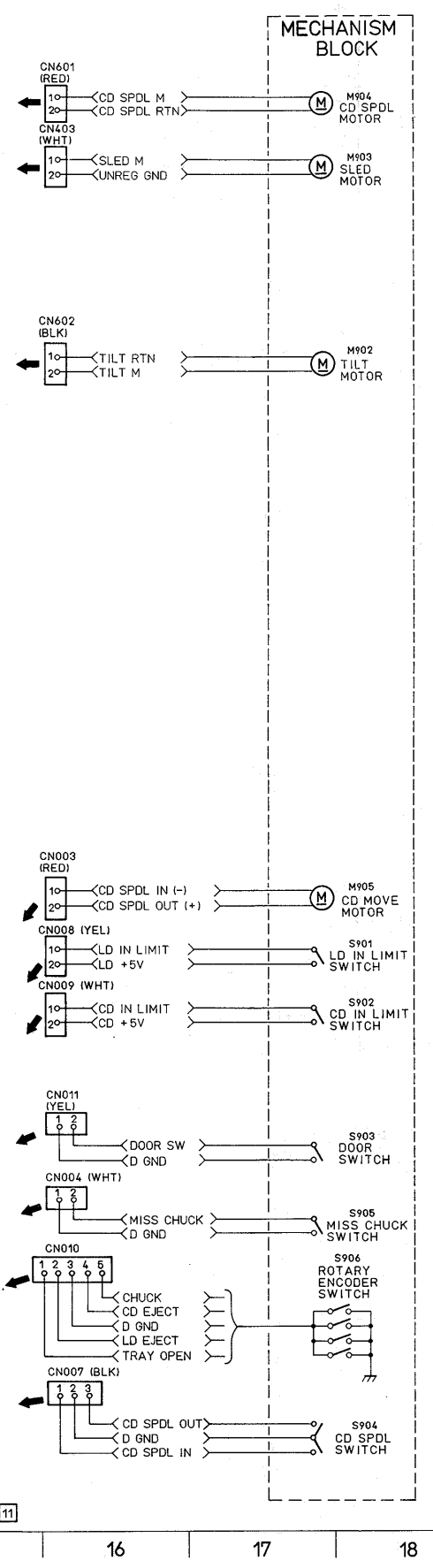
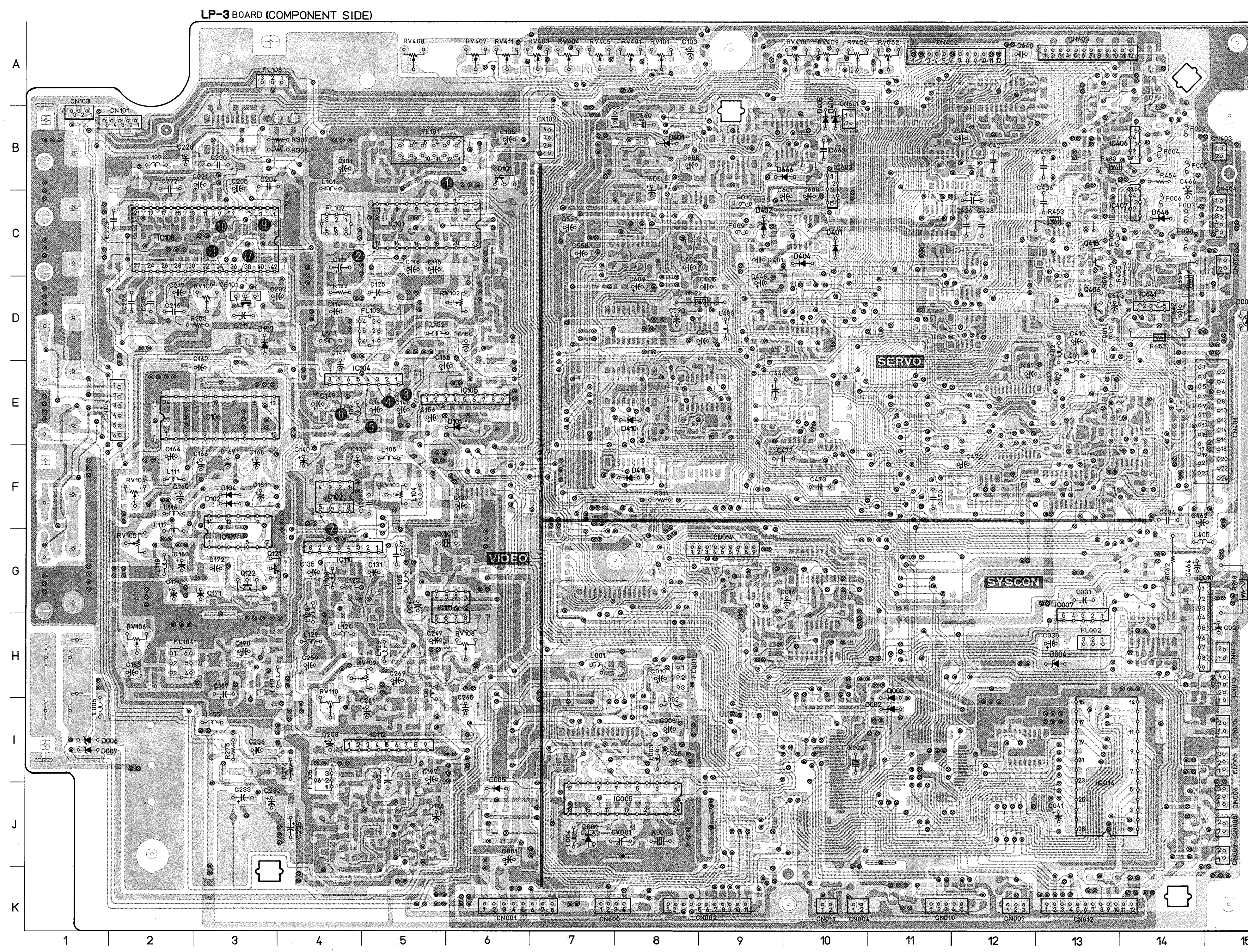
— Ref. No. LP-3 BOARD: 1,000 series —

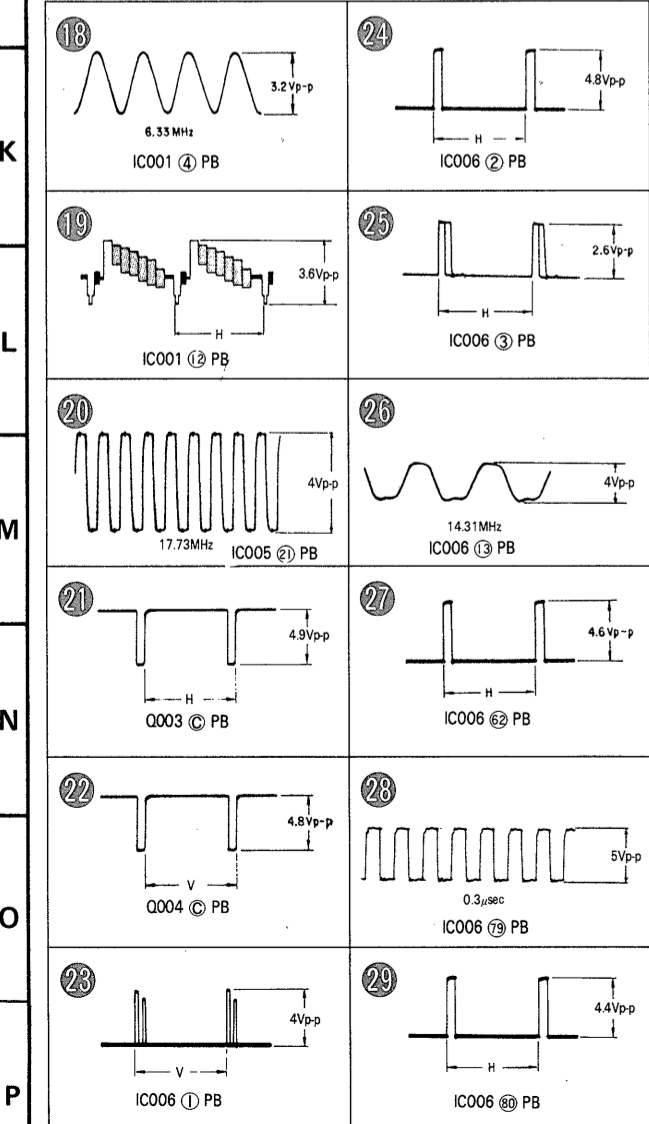
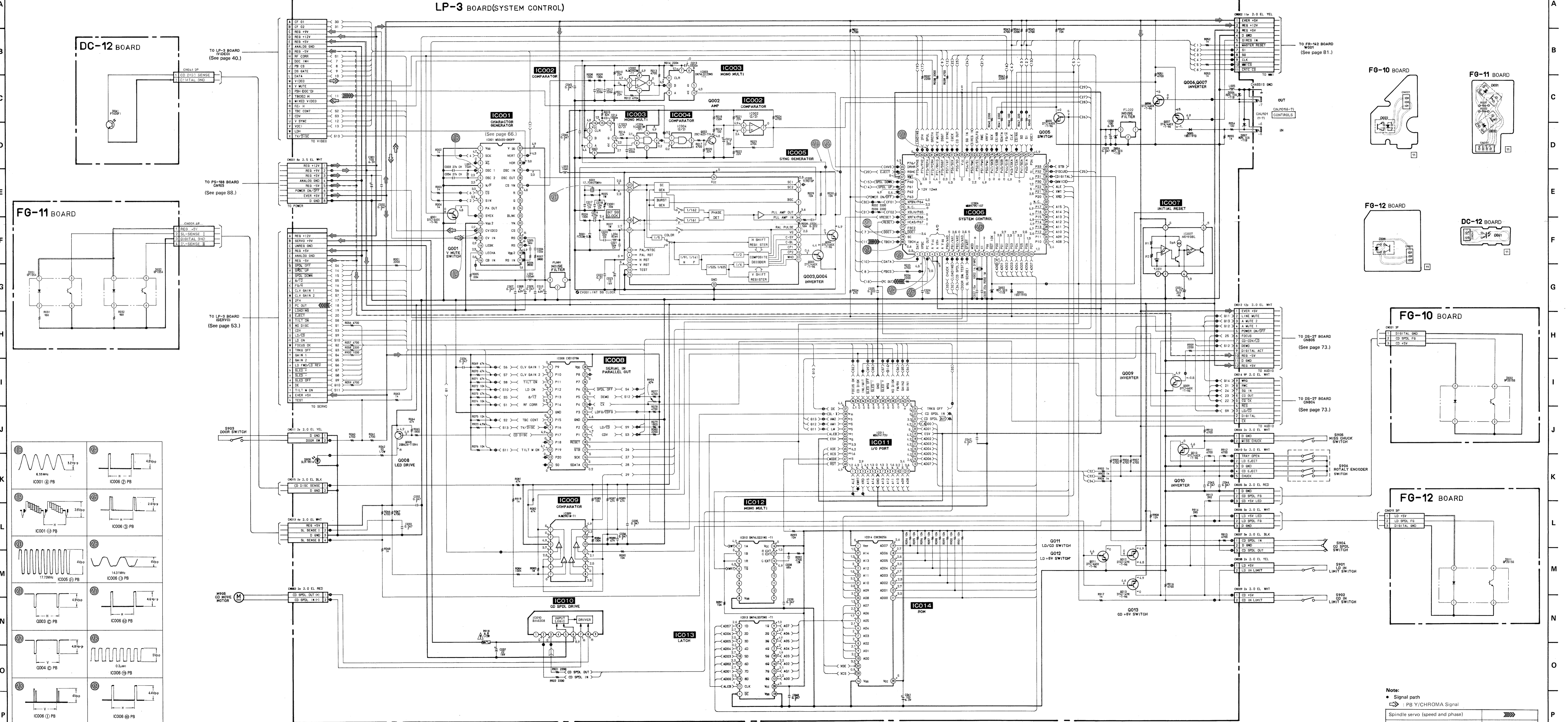
Note:
 ● : Through hole.
 ○ : Pattern of the rear side.

Caution:
 Pattern face side: Parts on the pattern face side seen from (Conductor Side) the pattern face are indicated.
 Parts face side: Parts on the parts face side seen from (Component Side) the parts face are indicated.

LP-3 BOARD

CN001	K-6	IC001	I-26	Q001	H-26	Q158	I-29
CN002	K-9	IC002	H-24	Q002	H-24	Q159	I-28
CN003	H-15	IC003	H-24	Q003	J-26	Q160	I-28
CN004	K-10	IC004	G-24	Q004	J-26	Q161	B-30
CN005	I-15	IC005	J-8	Q005	J-24	Q162	B-30
CN006	J-15	IC006	J-24	Q006	J-27	Q163	J-30
CN007	K-12	IC007	H-13	Q007	J-27	Q164	G-26
CN008	J-15	IC008	H-26	Q008	G-19	Q401	D-24
CN009	J-15	IC009	H-19	Q009	K-20	Q403	A-19
CN010	K-11	IC010	H-15	Q010	K-23	Q404	B-19
CN011	K-10	IC011	J-22	Q011	J-19	Q405	B-19
CN012	K-13	IC012	I-21	Q012	J-19	Q406	D-13
CN013	H-15	IC013	J-21	Q013	J-19	Q407	B-20
CN014	G-9	IC014	I-13	Q101	B-6	Q408	A-20
CN015	I-15	IC101	C-5	Q102	B-27	Q409	B-20
CN101	B-2	IC102	F-4	Q103	B-28	Q410	E-24
CN102	B-7	IC103	F-28	Q411	B-11	Q411	E-25
CN103	B-1	IC104	E-4	Q105	C-28	Q414	E-23
CN104	E-2	IC105	E-6	Q106	D-29	Q415	C-13
CN401	E-15	IC106	E-3	Q107	F-29	Q416	C-20
CN402	A-12	IC107	G-3	Q108	F-29	Q417	F-22
CN403	B-15	IC108	C-3	Q109	E-29	Q418	C-20
CN404	C-15	IC109	B-30	Q110	E-29	Q421	E-22
CN600	K-7	IC110	G-4	Q111	D-27	Q430	E-20
CN601	B-10	IC111	G-6	Q112	D-27	Q431	E-20
CN602	C-15	IC112	I-5	Q113	C-27	Q432	E-20
CN603	A-13	IC401	C-24	Q114	C-28	Q433	E-20
		IC402	D-22	Q115	E-28	Q434	F-20
CV001	J-8	IC403	E-21	Q116	E-28	Q602	B-26
		IC405	C-21	Q117	E-31	Q603	B-25
D001	J-7	IC406	B-14	Q118	B-31	Q604	B-26
D002	I-11	IC407	I-14	Q119	H-30	Q640	B-21
D003	I-11	IC408	E-24	Q120	H-30	Q641	A-21
D004	H-13	IC410	D-20	Q121	G-3	Q642	G-20
D005	J-6	IC411	D-24	Q122	G-3	Q643	F-20
D006	I-1	IC420	F-20	Q123	I-30	Q644	F-20
D007	I-1	IC421	F-23	Q124	I-31	Q645	D-19
D008	E-15	IC422	F-22	Q126	H-31	Q646	D-19
D101	E-6	IC423	F-20	Q126	H-31	Q648	C-19
D102	F-3	IC430	E-26	Q127	H-30	Q649	C-19
D103	D-3	IC431	F-26	Q128	H-30	Q656	B-24
D104	F-3	IC432	E-25	Q129	H-30		
D401	C-10	IC433	F-25	Q130	J-29	RV101	A-8
D402	C-9	IC550	D-22	Q131	J-29	RV102	D-6
D403	E-22	IC552	C-22	Q132	J-29	RV103	F-5
D404	C-10	IC560	D-25	Q133	K-29	RV104	F-2
D405	B-10	IC600	C-25	Q134	J-29	RV105	G-2
D406	B-10	IC601	C-26	Q135	J-28	RV106	H-2
D408	E-22	IC602	B-24	Q136	J-28	RV107	D-3
D409	E-25	IC603	B-10	Q137	J-28	RV108	H-6
D410	E-8	IC604	B-25	Q138	J-28	RV109	H-5
D411	F-8	IC605	D-26	Q139	K-28	RV110	I-4
D601	B-8	IC640	B-21	Q140	J-28	RV401	A-8
D648	C-14	IC641	D-14	Q141	K-28	RV403	A-7
D666	B-10	IC642	B-22	Q142	C-30	RV404	A-7
				Q143	D-32	RV405	A-7
				Q144	C-31	RV406	A-10
				Q145	E-30	RV407	A-6
				Q146	E-30	RV408	A-5
				Q147	J-31	RV409	A-10
				Q148	J-30	RV410	A-10
				Q149	H-29	RV411	A-6
				Q150	H-29	RV552	A-11
				Q151	G-28		
				Q152	H-28		
				Q153	H-28		
				Q154	H-28		
				Q155	H-29		
				Q156	I-30		
				Q157	I-29		





Note:
 ● Signal path
 ⇨ PB Y/CHROMA Signal
 Spindle servo (speed and phase) ⇨⇨⇨
 Slide servo ⇨⇨

**LP-3 (SYSTEM CONTROL)
PRINTED WIRING BOARD**

— Ref. No. LP-3 BOARD: 1,000 series —

Note:

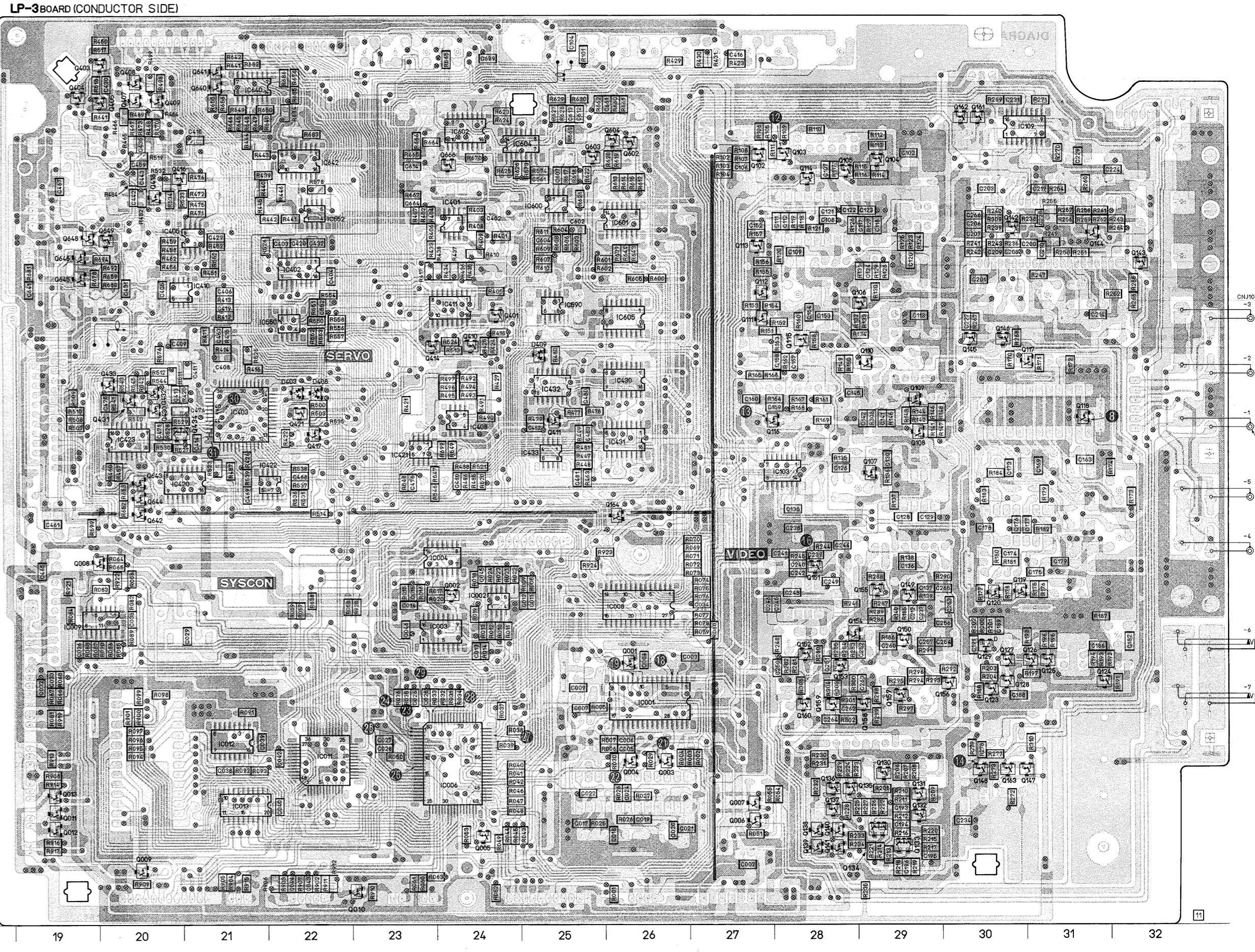
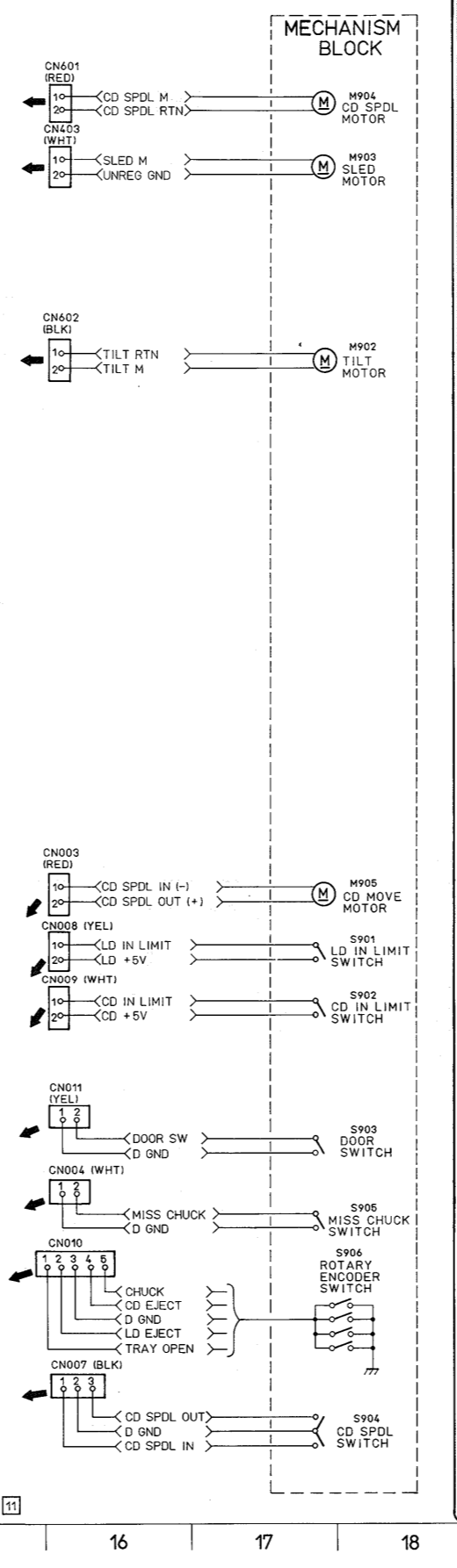
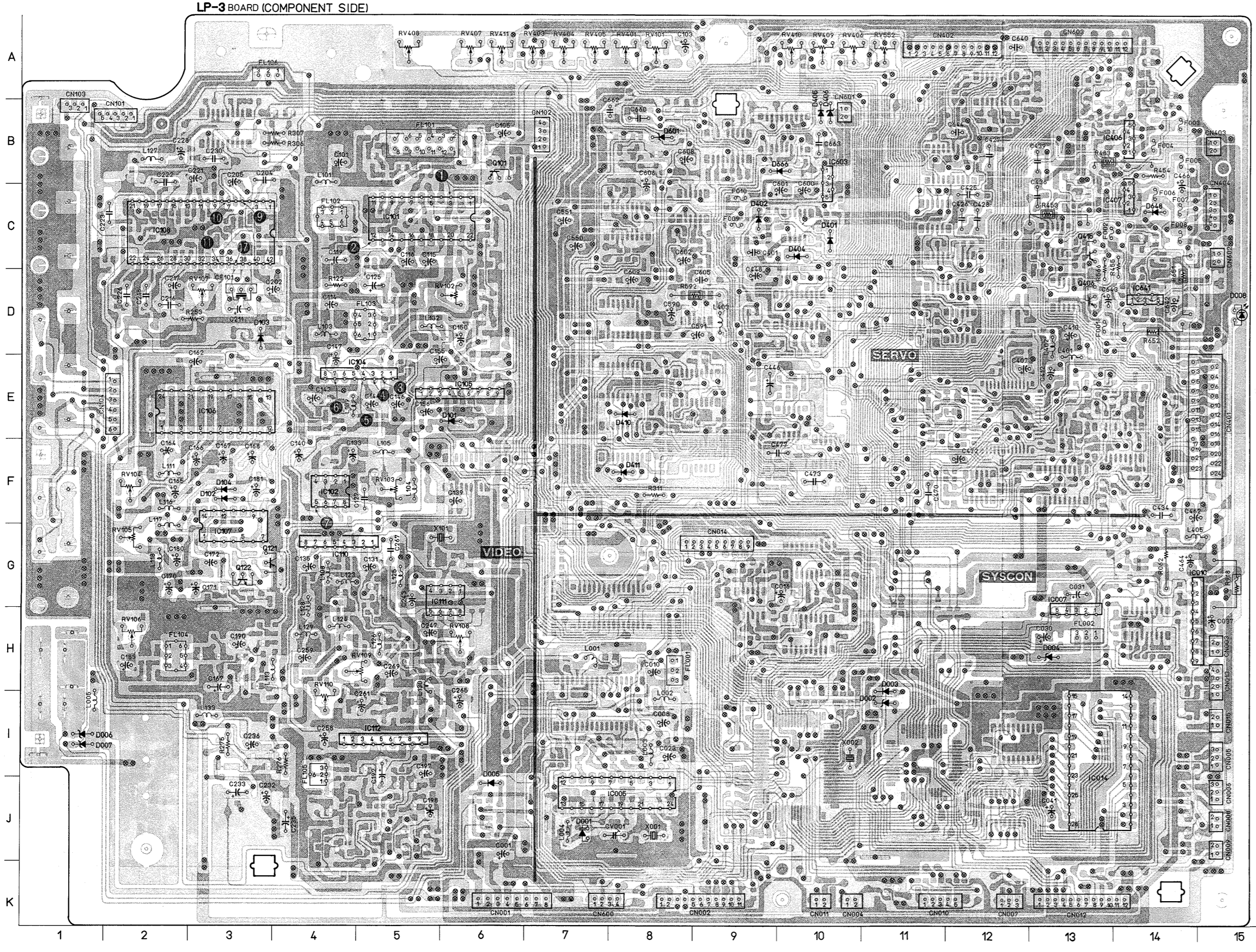
- : Through hole.
- : Pattern of the rear side.

Caution:

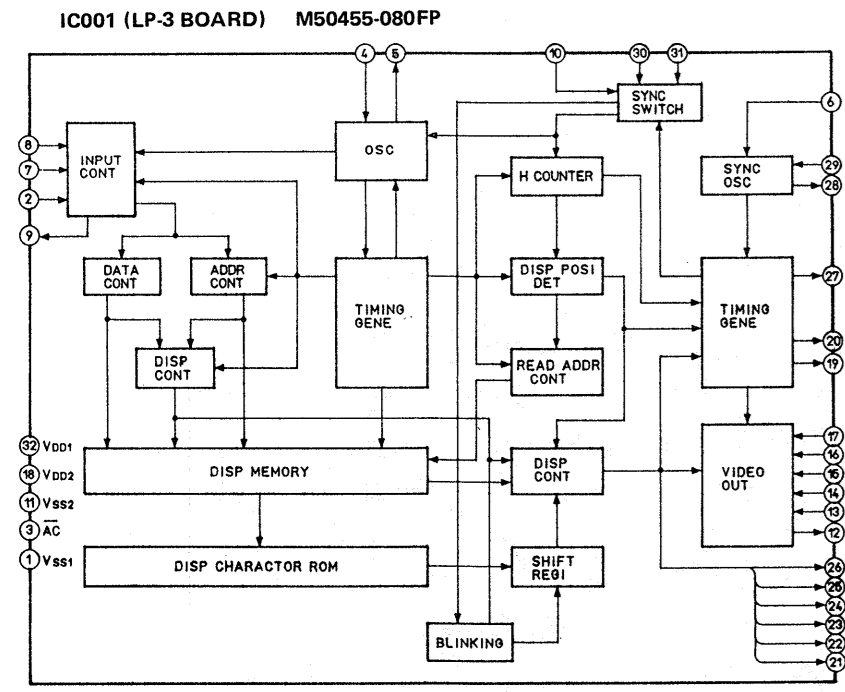
Pattern face side: Parts on the pattern face side seen from (Conductor Side) the pattern face are indicated.
Parts face side: Parts on the parts face side seen from (Component Side) the parts face are indicated.

LP-3 BOARD

CN001 K-6	IC001 I-26	Q001 H-26	Q158 I-29
CN002 K-9	IC002 H-24	Q002 H-24	Q159 I-28
CN003 H-15	IC003 H-24	Q003 H-26	Q160 I-28
CN004 K-10	IC004 J-26	Q004 B-30	Q161 B-30
CN005 I-15	IC005 J-8	Q005 J-24	Q162 B-30
CN006 J-15	IC006 J-24	Q006 J-27	Q163 J-30
CN007 K-12	IC007 H-13	Q007 J-27	Q164 G-26
CN008 J-15	IC008 H-26	Q008 G-19	Q165 D-24
CN009 J-15	IC009 H-19	Q009 K-20	Q166 A-19
CN010 K-11	IC010 H-15	Q010 K-23	Q167 A-19
CN011 K-10	IC011 J-22	Q011 J-19	Q168 B-19
CN012 K-13	IC012 I-21	Q012 J-19	Q169 D-13
CN013 H-15	IC013 J-21	Q013 J-19	Q170 B-20
CN014 K-9	IC014 I-13	Q014 B-6	Q171 A-20
CN015 I-15	IC015 C-5	Q102 B-27	Q409 B-20
CN101 B-2	IC102 F-4	Q103 B-28	Q410 E-24
CN102 B-7	IC103 F-28	Q104 B-29	Q411 E-25
CN103 B-1	IC104 E-4	Q105 E-28	Q414 E-23
CN104 E-2	IC105 E-6	Q106 D-29	Q415 C-13
CN401 E-15	IC106 E-3	Q107 F-29	Q416 C-20
CN402 A-12	IC107 G-3	Q108 F-29	Q417 F-22
CN403 B-15	IC108 C-3	Q109 E-29	Q418 C-20
CN404 C-15	IC109 B-30	Q110 E-29	Q421 E-22
CN600 K-7	IC110 G-4	Q111 D-27	Q430 E-20
CN601 B-10	IC111 G-6	Q112 D-27	Q431 E-20
CN602 C-15	IC112 I-5	Q113 C-27	Q432 E-20
CN603 A-13	IC401 C-24	Q114 C-28	Q433 E-20
	IC402 D-22	Q115 E-28	Q434 F-20
	IC403 E-21	Q116 E-28	Q602 B-26
	IC405 C-21	Q117 E-31	Q603 B-25
	IC406 B-14	Q118 E-31	Q604 B-26
	IC407 C-14	Q119 H-30	Q640 B-21
	IC408 E-24	Q120 H-30	Q641 A-21
	IC410 D-20	Q121 G-3	Q642 G-20
	IC411 D-24	Q122 G-3	Q643 F-20
	IC420 F-20	Q123 I-30	Q644 F-20
	IC421 F-23	Q124 I-31	Q645 D-19
	IC422 F-22	Q125 H-31	Q646 D-19
	IC423 F-20	Q126 H-31	Q648 C-19
	IC430 E-26	Q127 H-30	Q649 C-20
	IC431 F-26	Q128 H-30	Q650 C-20
	IC432 E-25	Q129 H-30	
	IC433 F-25	Q130 J-29	RV101 A-8
	IC550 D-22	Q131 J-29	RV102 D-6
	IC552 C-22	Q132 J-29	RV103 F-5
	IC559 D-25	Q133 K-29	RV104 F-2
	IC600 C-25	Q134 J-29	RV105 G-2
	IC601 C-26	Q135 J-28	RV106 H-2
	IC602 B-24	Q136 J-28	RV107 D-3
	IC603 B-10	Q137 J-28	RV108 H-6
	IC604 E-8	Q138 J-28	RV109 H-5
	IC605 D-26	Q139 K-28	RV110 I-4
	IC640 B-21	Q140 J-28	RV401 A-8
	IC641 D-14	Q141 K-28	RV403 A-7
	IC642 B-22	Q142 C-30	RV404 A-7
		Q143 A-7	RV405 A-7
		Q144 C-31	RV406 A-10
		Q145 E-30	RV407 A-6
		Q146 E-30	RV408 A-5
		Q147 J-31	RV409 A-10
		Q148 J-30	RV410 A-10
		Q149 H-29	RV411 A-6
		Q150 H-29	RV552 A-11
		Q151 G-28	
		Q152 H-28	
		Q153 H-28	
		Q154 H-28	
		Q155 H-29	
		Q156 I-30	
		Q157 I-29	



● SYSTEM CONTROL BLOCK IC BLOCK DIAGRAM



DS-27 (DIGITAL AUDIO) AND HP-44 (HEADPHONE AMP) PRINTED WIRING BOARDS

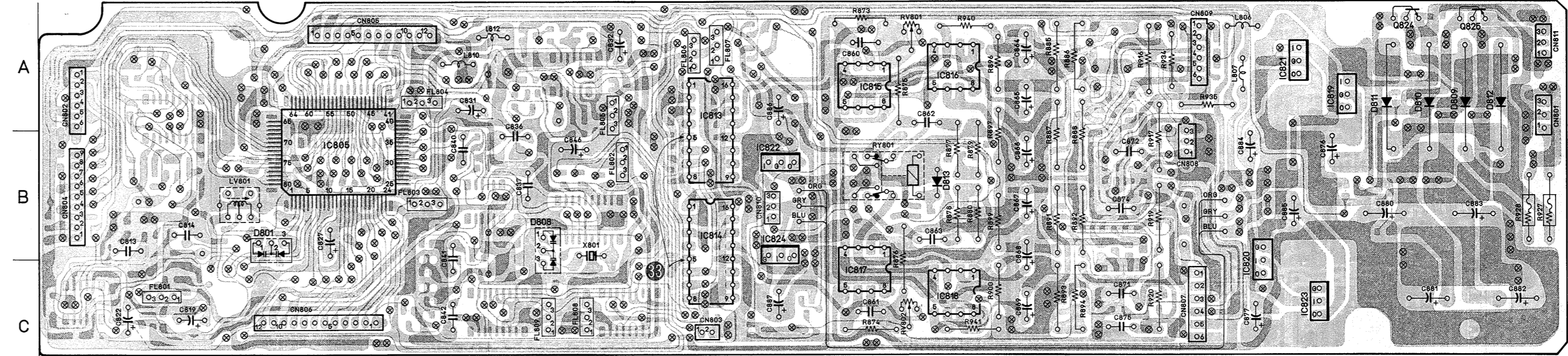
— Ref. No. DS-27 and HP-44 BOARDS: 3,000 series —

Note:

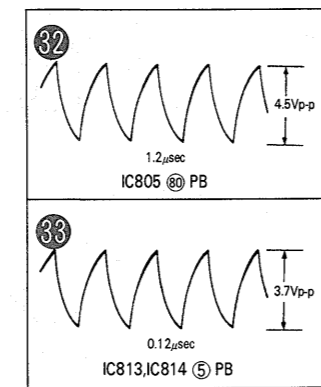
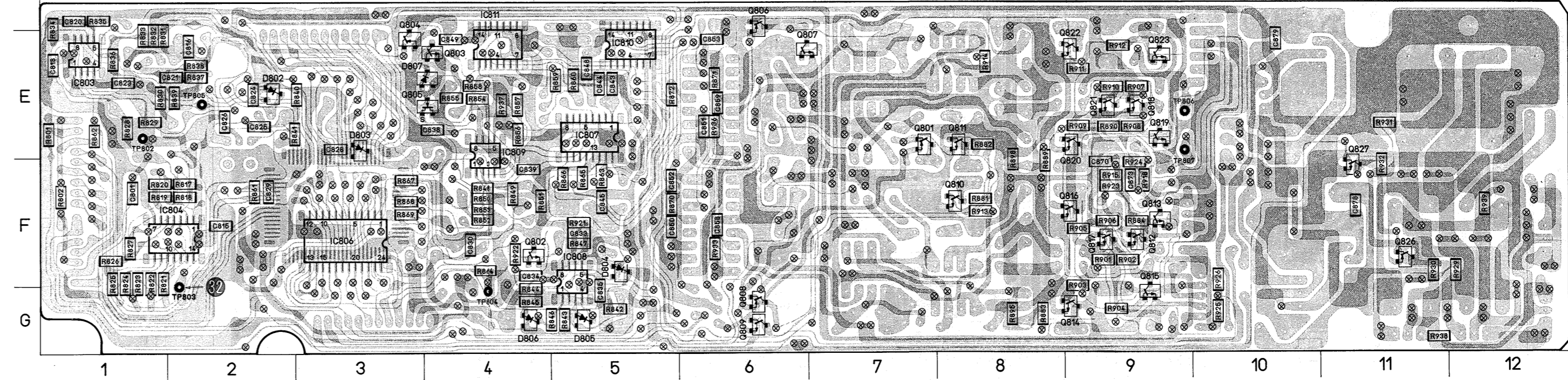
- ⊗ : Through hole.
- ⊞ : Pattern of the rear side.

Caution:
 Pattern face side: Parts on the pattern face side seen from (Conductor Side) the pattern face are indicated.
 Parts face side: Parts on the parts face side seen from (Component Side) the parts face are indicated.

DS-27 BOARD (COMPONENT SIDE)



DS-27 BOARD (CONDUCTOR SIDE)



DS-27 BOARD
 CN401 G-14
 CN801 A-12
 CN802 A-1
 CN803 C-6
 CN804 B-1
 CN805 A-3
 CN806 C-3
 CN807 C-10
 CN808 B-10
 CN809 A-10
 CN810 B-6
 CN811 A-12

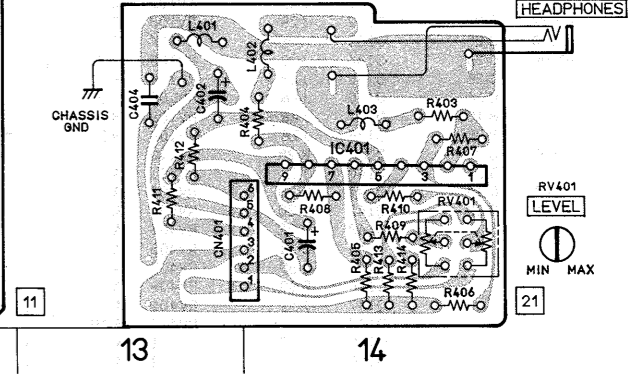
D801 B-2
 D802 E-2
 D803 E-3
 D804 F-5
 D805 G-5
 D806 G-4
 D807 E-4
 D808 B-5
 D809 A-12
 D810 A-11
 D811 A-11
 D812 A-12
 D813 B-8
 D814 A-12
 D815 A-12
 D816 F-14
 D817 E-1
 D818 F-2
 D819 E-9
 D820 E-9
 D821 E-9
 D822 E-9
 D823 E-9
 D824 A-11
 D825 A-12
 D826 F-11
 D827 F-11

Q801 E-7
 Q802 F-4
 Q803 E-4
 Q804 E-3
 Q805 E-4
 Q806 D-6
 Q807 E-7
 Q808 G-6
 Q809 G-6
 Q810 F-8
 Q811 E-8
 Q812 F-9
 Q813 F-9
 Q814 G-9
 Q815 G-9
 Q816 F-9
 Q817 F-9
 Q818 E-9
 Q819 E-9
 Q820 E-9
 Q821 E-9
 Q822 E-9
 Q823 E-9
 Q824 A-11
 Q825 A-12
 Q826 F-11
 Q827 F-11

RV401 G-14
 RV801 A-7
 RV802 C-7

LV801 B-2

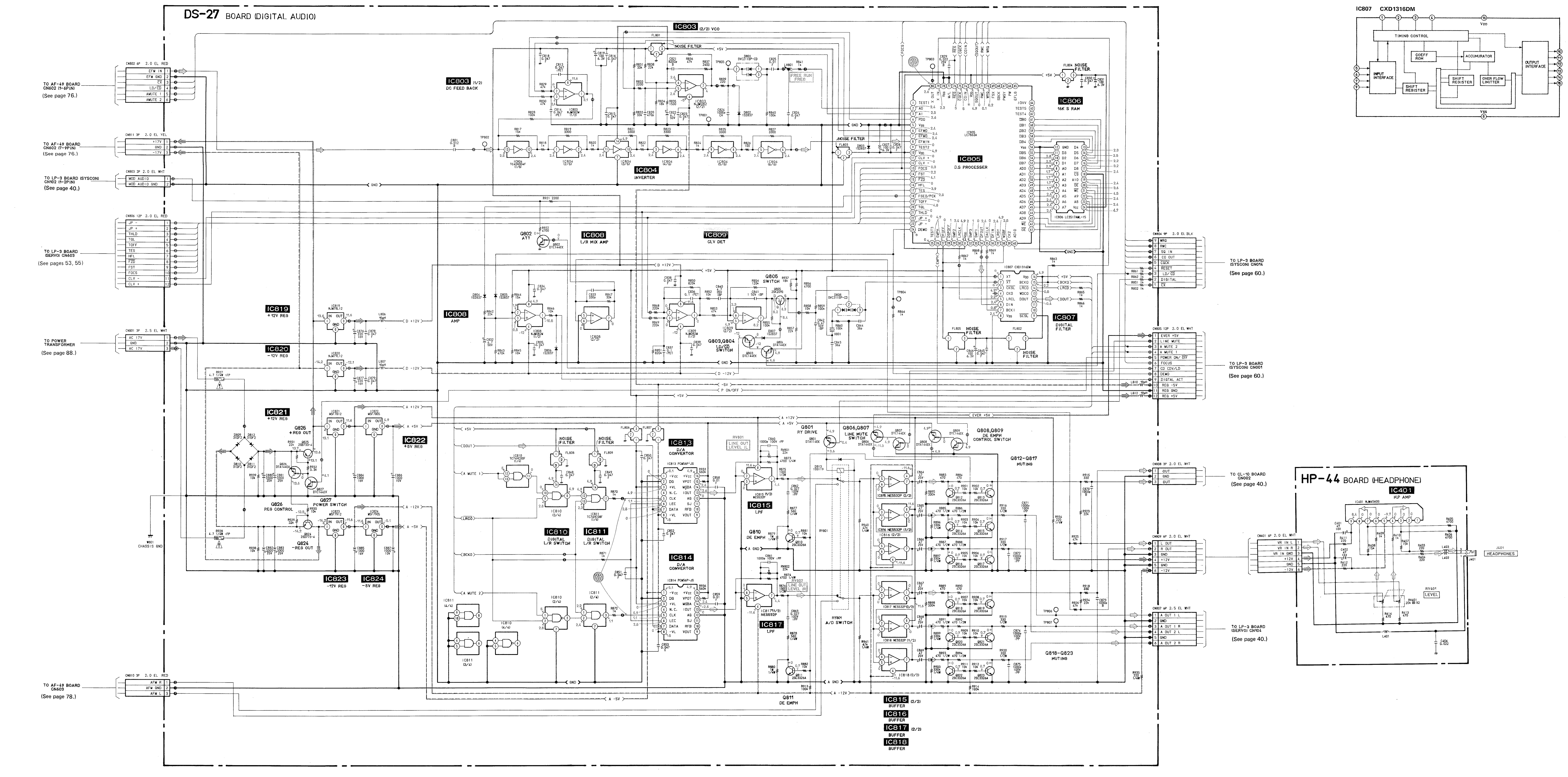
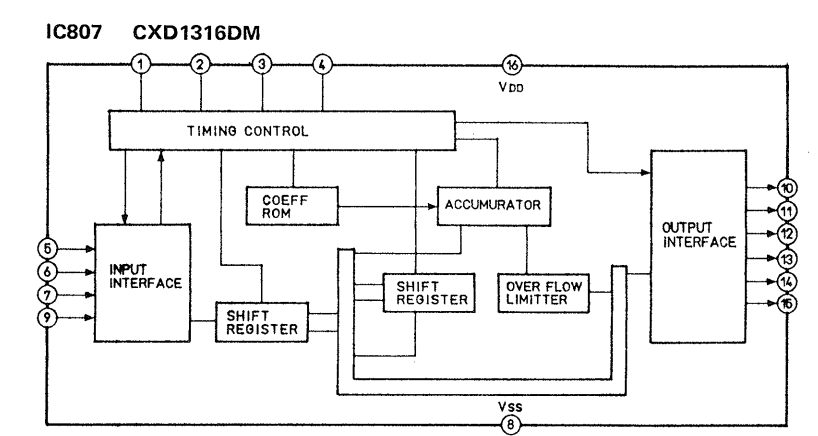
HP-44 BOARD



DS-27 (DIGITAL AUDIO) AND HP-44 (HEADPHONE AMP) SCHEMATIC DIAGRAM
- Ref. No. DS-27 and HP-44 BOARDS: 3,000 series -

Note:
● Signal path
⇨ PB AUDIO Signal

DS-27 BOARD (DIGITAL AUDIO)

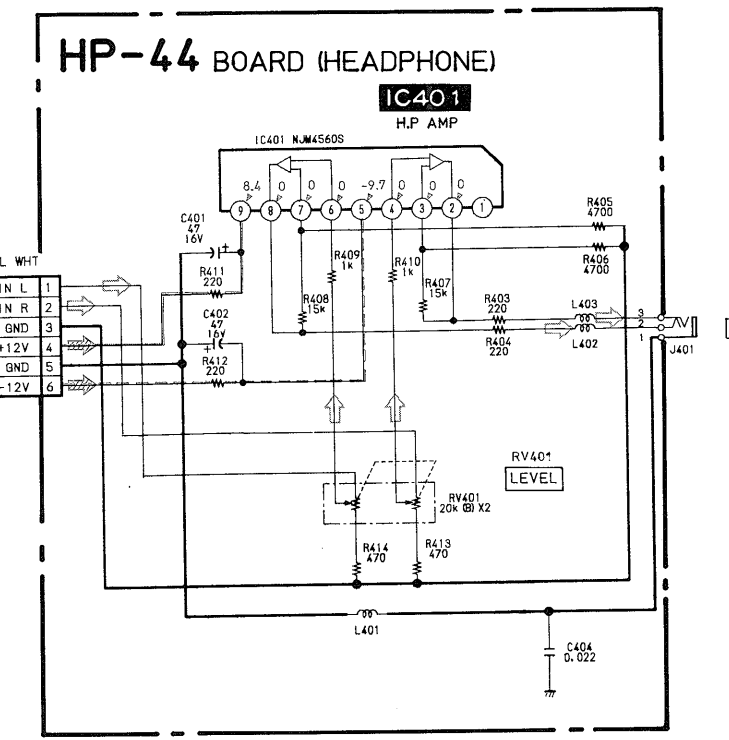


TO LP-3 BOARD ISYSCON CN014 (See page 60.)

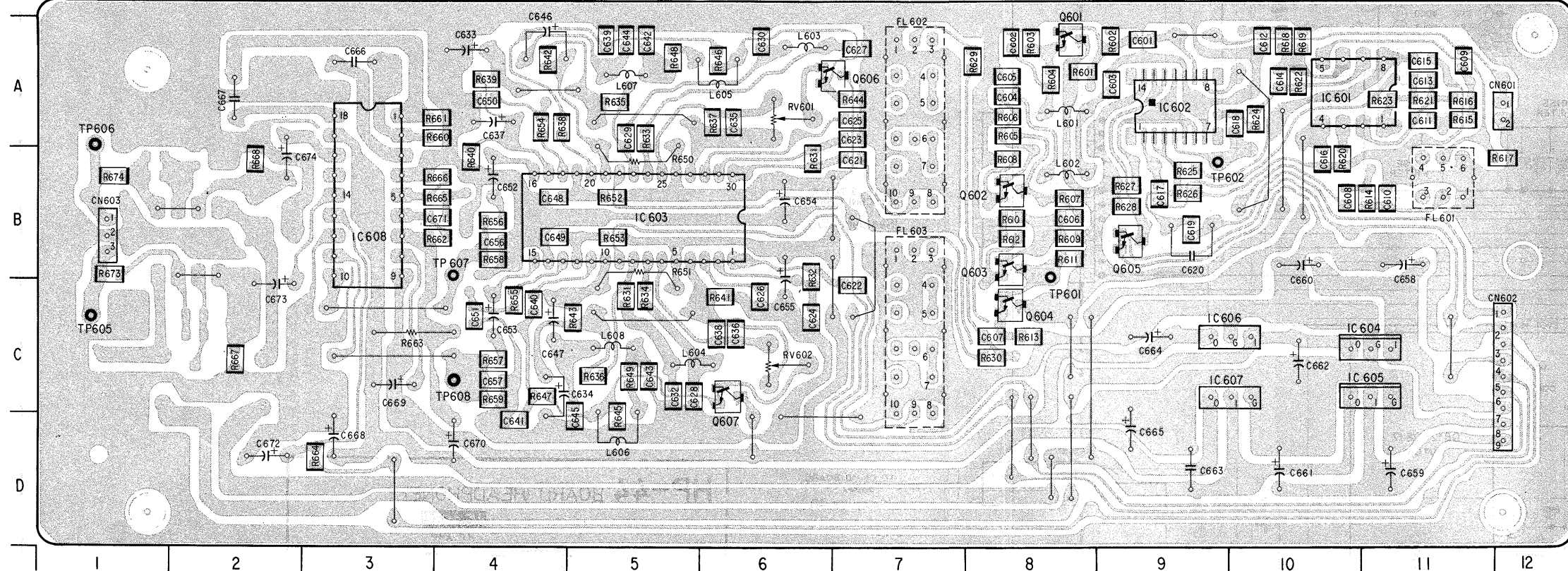
TO LP-3 BOARD ISYSCON CN001 (See page 60.)

TO CL-10 BOARD CN002 (See page 40.)

TO LP-3 BOARD SERVOMI CN004 (See page 40.)

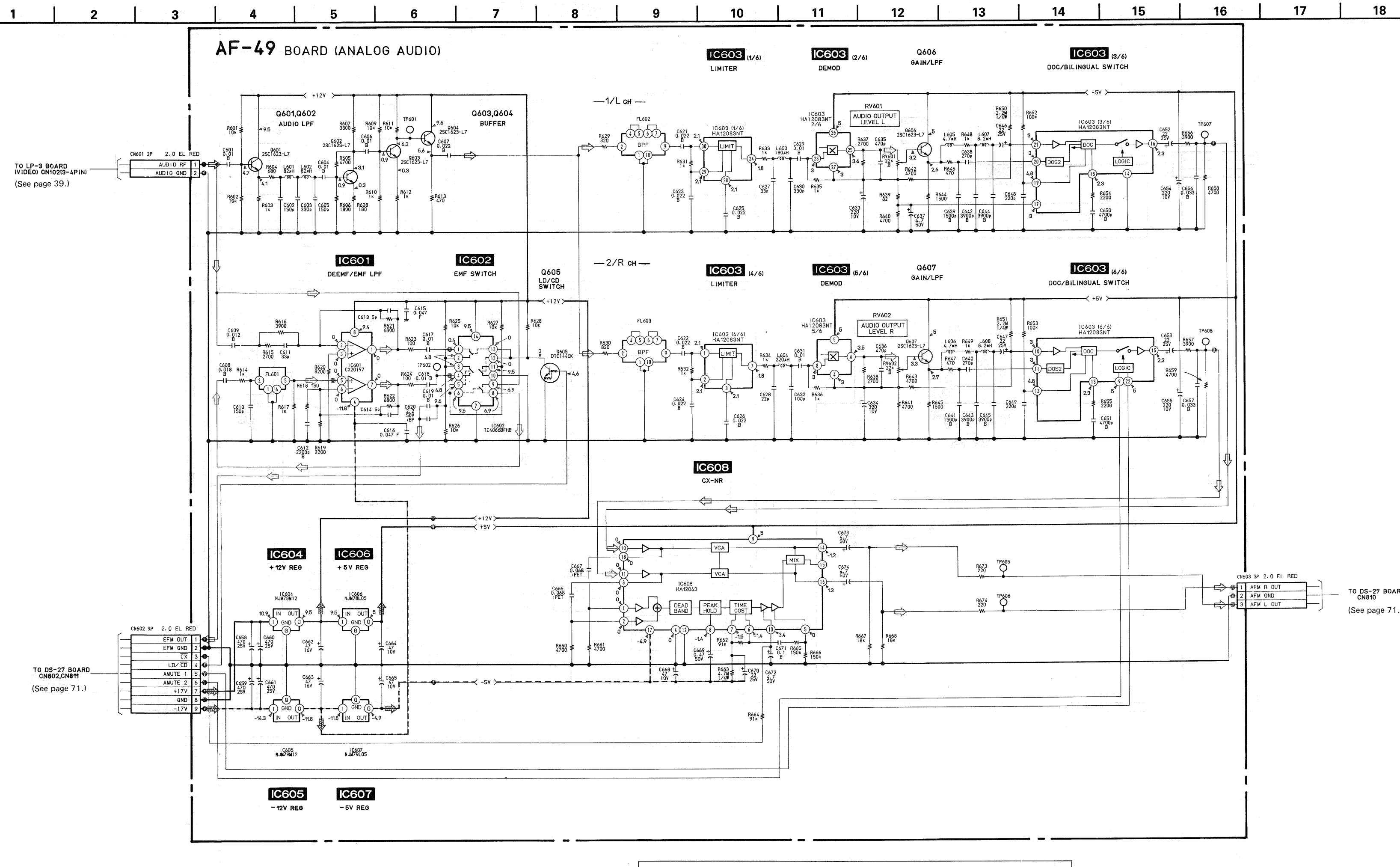


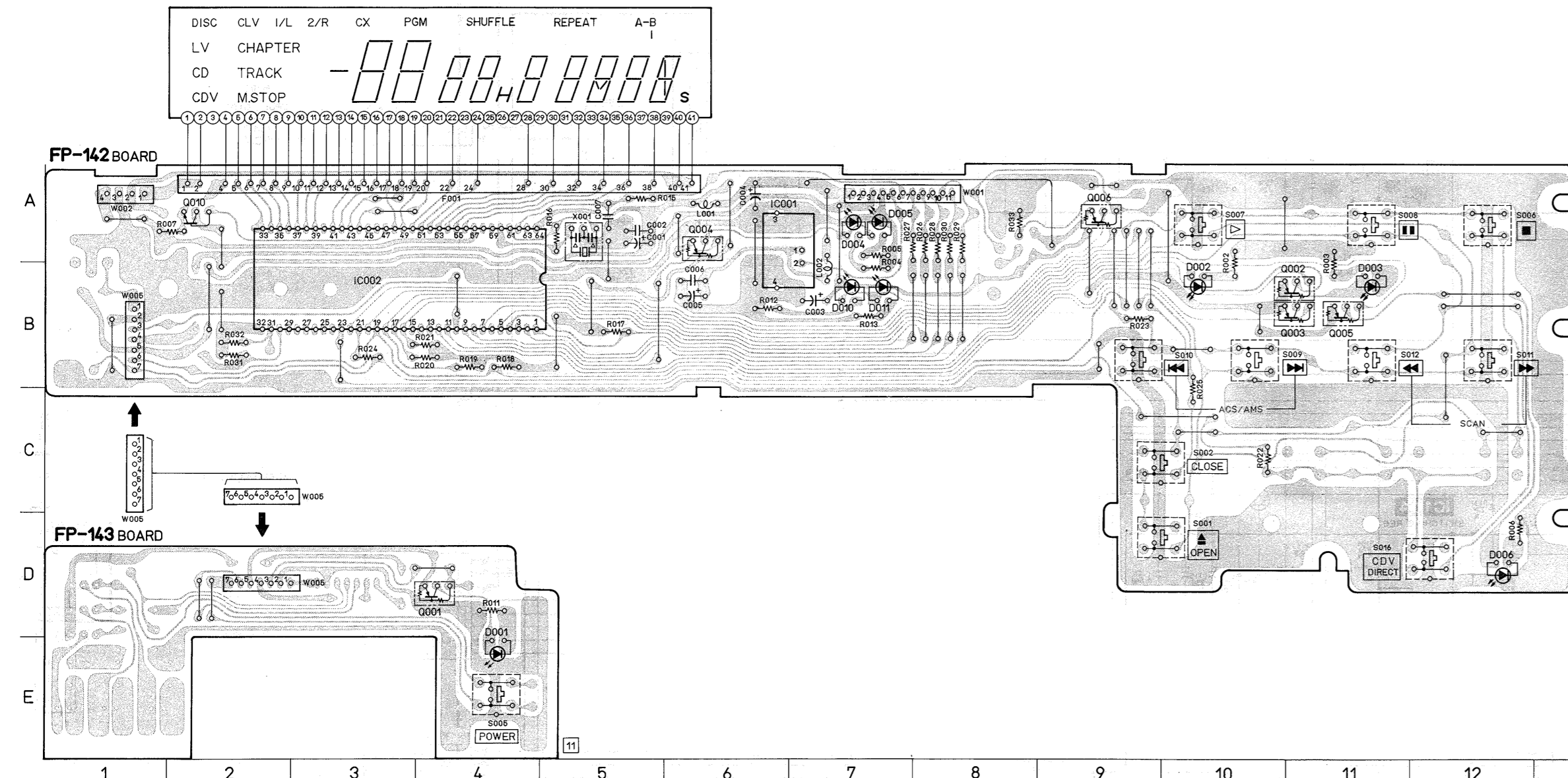
AF-49 BOARD



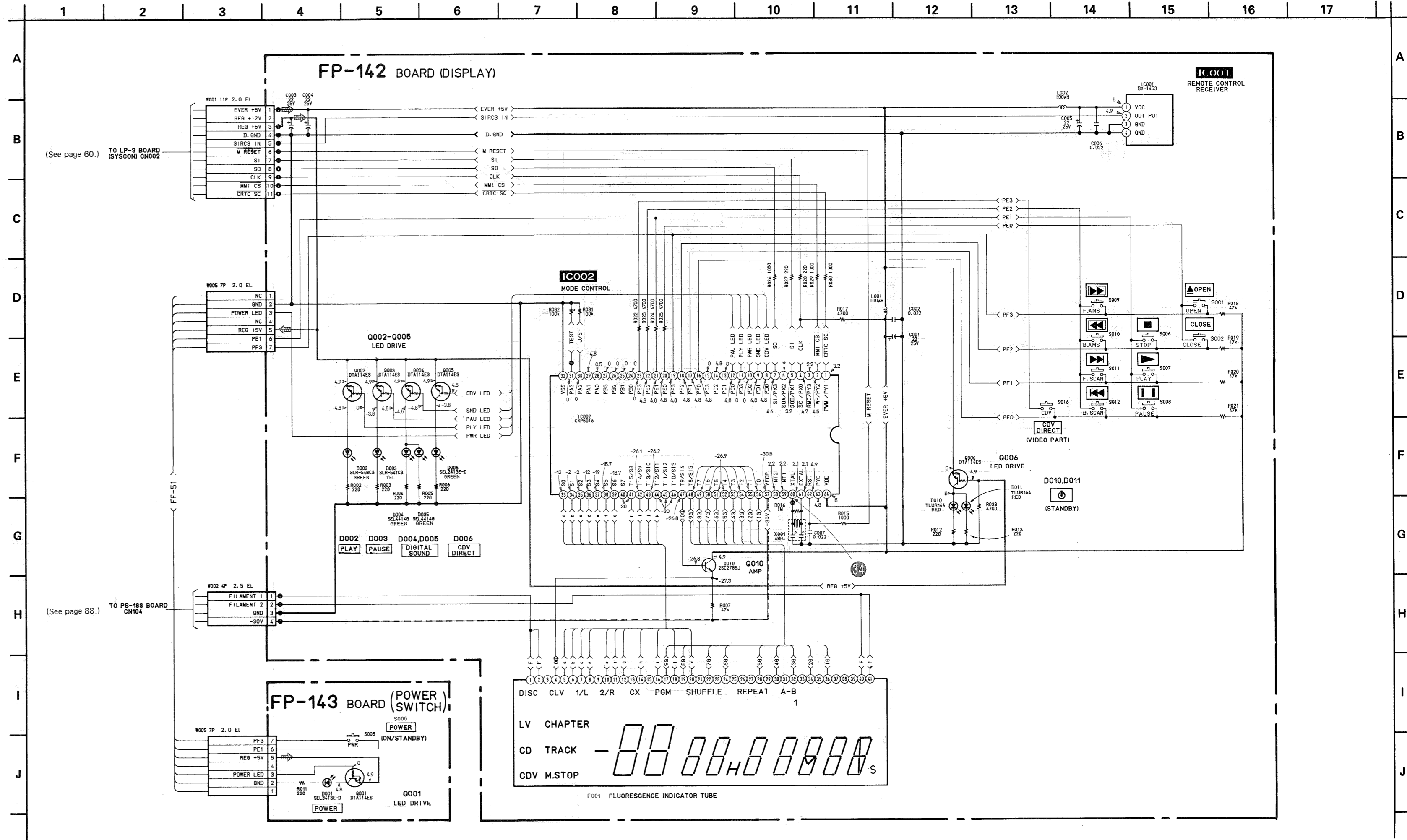
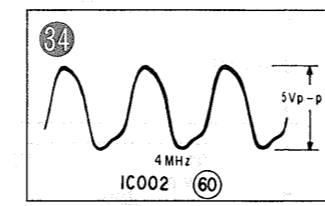
- AF-49 BOARD
 CN601 A-12
 CN602 C-12
 CN603 B-1
 IC601 A-10
 IC602 A-9
 IC603 B-5
 IC604 C-11
 IC605 C-11
 IC606 C-9
 IC607 C-9
 IC608 B-3
 Q601 A-8
 Q602 B-8
 Q603 B-8
 Q604 C-8
 Q605 B-4
 Q606 A-6
 Q607 C-6

Note:
 ● Signal path
 ⇨ : PB AUDIO Signal



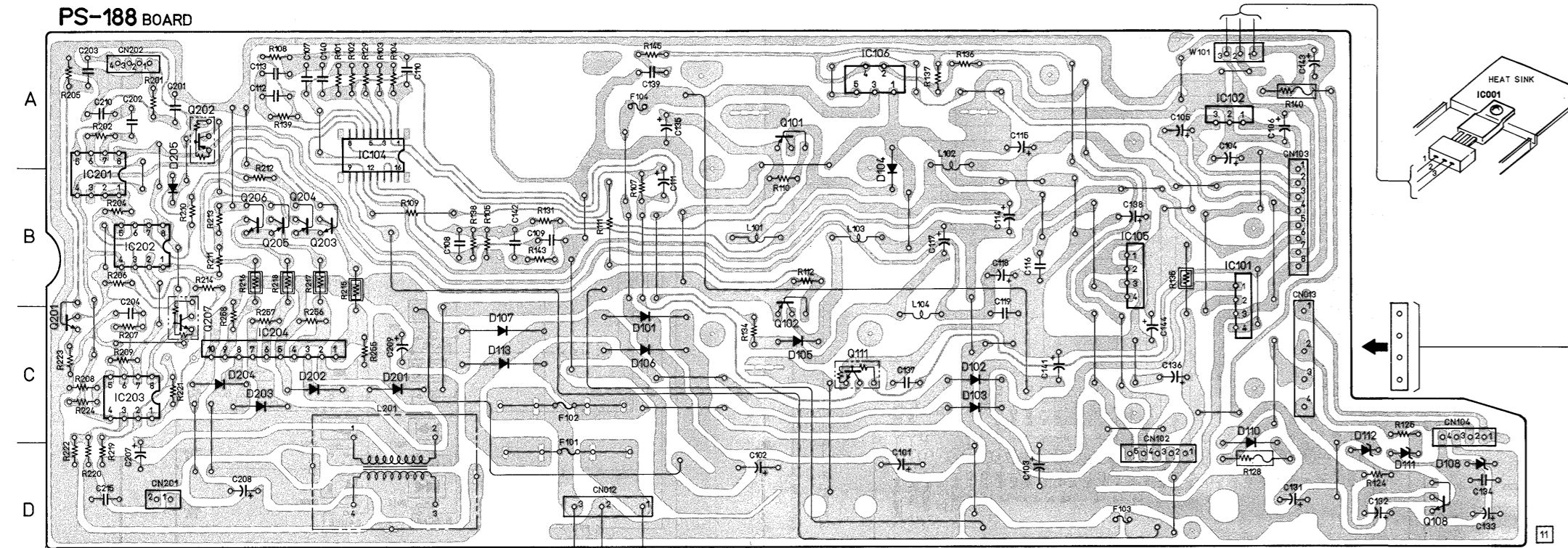


- FP-142, FP-143 BOARD**
- D001 E-4
 - D002 B-10
 - D003 B-11
 - D004 A-7
 - D005 A-7
 - D006 D-12
 - D010 B-7
 - D011 B-7
 - D012 A-5
 - D013 A-1
 - IC001 A-6
 - IC002 B-3
 - Q001 D-4
 - Q002 B-11
 - Q003 B-11
 - Q004 A-6
 - Q005 B-11
 - Q006 A-9
 - Q010 A-2
 - W001 A-7
 - W002 A-1
 - W005 G-1

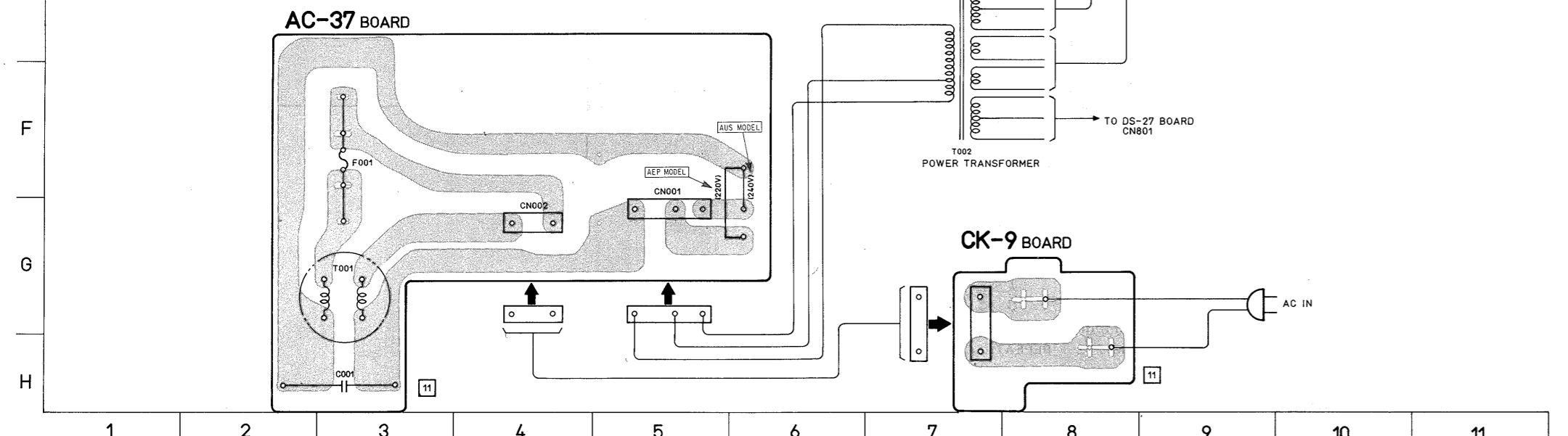


(See page 80.)

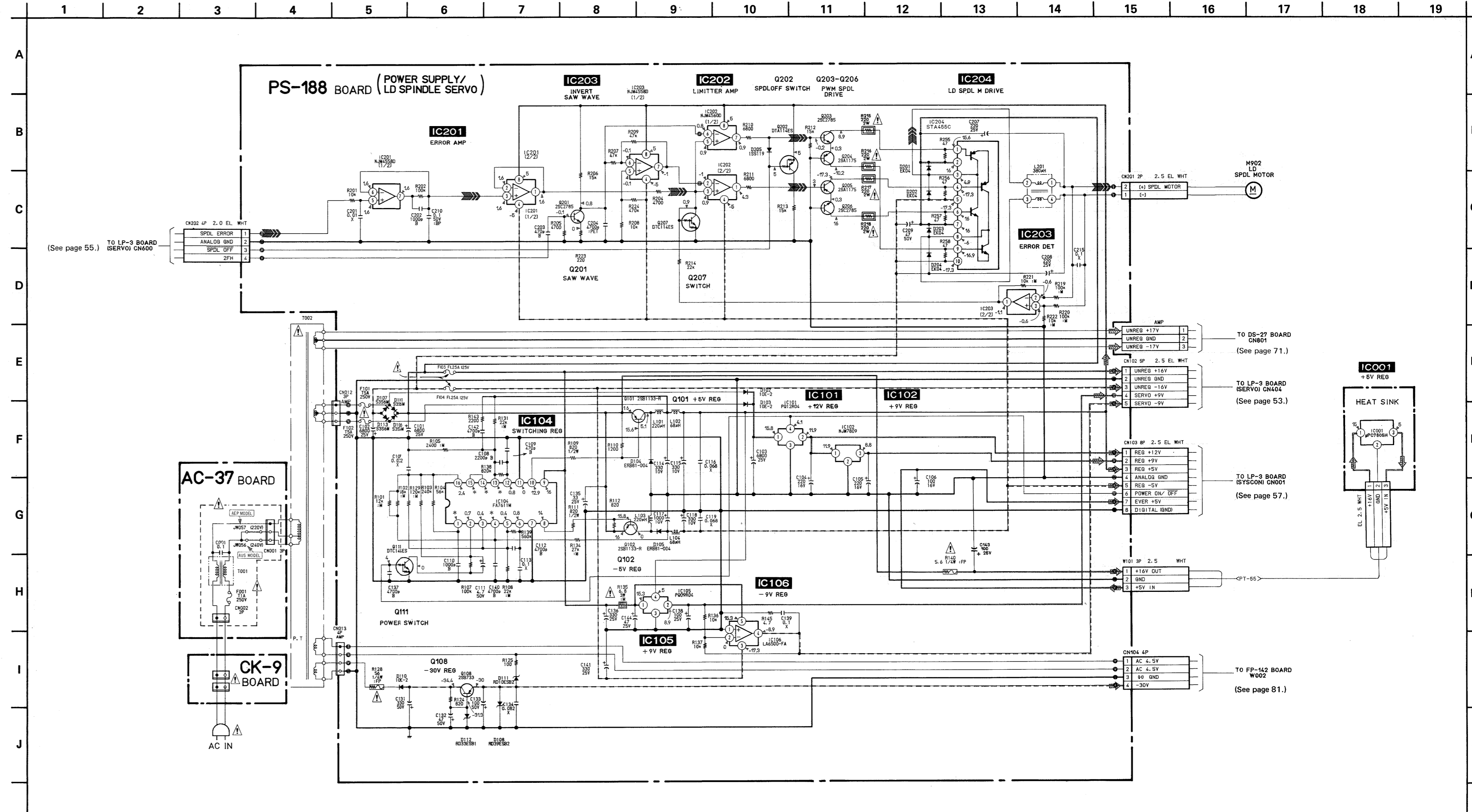
(See page 88.)



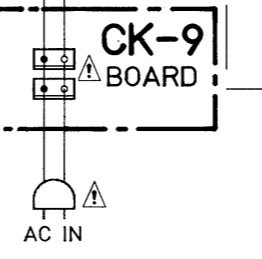
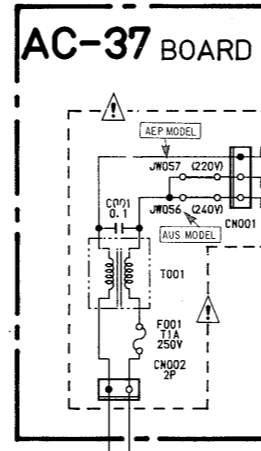
- PS-188 BOARD**
- CN012 D-5
 - CN013 C-10
 - CN102 D-9
 - CN103 B-10
 - CN104 C-11
 - CN201 D-1
 - CN202 A-1
 - D101 C-5
 - D102 C-7
 - D103 C-7
 - D104 A-7
 - D105 C-6
 - D106 C-5
 - D107 C-4
 - D108 D-11
 - D110 C-9
 - D111 D-10
 - D112 D-10
 - D113 C-4
 - D201 C-3
 - D202 C-2
 - D203 C-2
 - D204 C-2
 - D205 B-1
 - IC101 B-9
 - IC102 A-9
 - IC104 A-3
 - IC105 B-5
 - IC106 A-7
 - IC201 B-1
 - IC202 B-1
 - IC203 B-1
 - IC204 C-2
 - Q101 A-6
 - Q102 C-6
 - Q108 D-11
 - Q111 C-6
 - Q201 C-1
 - Q202 A-2
 - Q203 B-3
 - Q204 B-2
 - Q205 B-2
 - Q206 B-2
 - Q207 C-2
 - W101 A-9
- AC-37 BOARD**
- CN001 G-5
 - CN002 G-4



Note:
 • Signal path
 Spindle servo (speed and phase) →



(See page 55.) TO LP-3 BOARD (SERVO) CN600

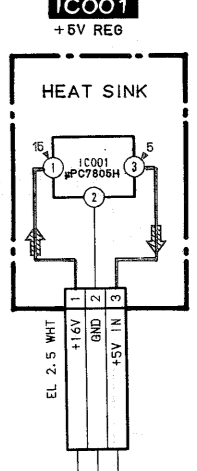


TO DS-27 BOARD CN801 (See page 71.)

TO LP-3 BOARD (SERVO) CN404 (See page 53.)

TO LP-3 BOARD (SYSCON) CN001 (See page 57.)

TO FP-142 BOARD W002 (See page 81.)

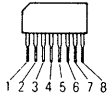


4-3. SEMICONDUCTORS

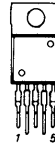
BA6208
BA7021
TA7357AP



CX20061



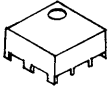
LA6500-FA
LA6500S-LR



M51953BL



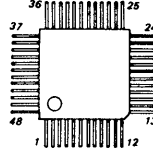
BX-1453



CXL5003P
CX20197
NE5532P
IR3C02AN
 μ PC4558C



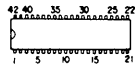
LA9200NM
MB674172U



M5218FP



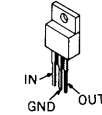
CXA1018S



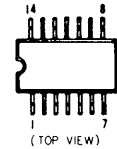
(Top view)

FA7611M
SN74LS123NS
SN74LS221NS
TC4053BFHB

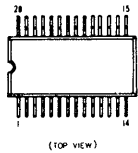
M5F7805
M5F7812
NJM78L09K
TC74HC00F
TC74HC04F
TC74HC08F
 μ PC324G2



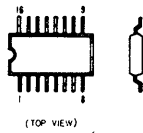
BU4066BF
NJM2901M
TC40H004F
TC4081BF
TC74HC00F
TC74HC04F
TC74HC08F
 μ PC324G2



CXD1078M
CXK38256-080P

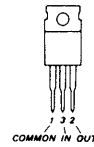


(TOP VIEW)

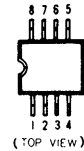


(TOP VIEW)

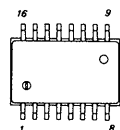
M5F7905
M5F7912
NJM79M12A



NJM2903M
NJM4558M
 μ PC358G2
 μ PC4082G2

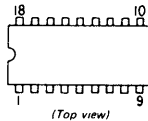


CXD1316DM



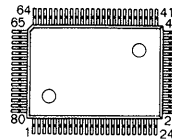
MARKING SIDE VIEW

HA12043

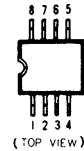


(Top view)

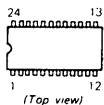
LC7863A
MB89795-107



NJM2903M
NJM4558M
 μ PC358G2
 μ PC4082G2

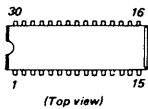


CXL1004P
LC3517AML-15
TC9015P



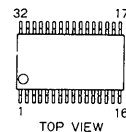
(Top view)

HA12083NT



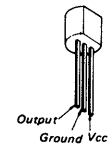
(Top view)

M50455-080FP

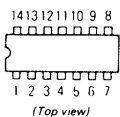


TOP VIEW

NJM78L05A

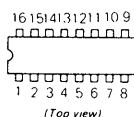


SN75107BN



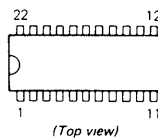
(Top view)

PCM56P-JS



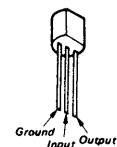
(Top view)

M51481P

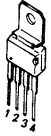


(Top view)

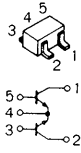
NJM79L05A
NJM79L12A



PQ09R04S



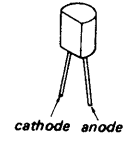
FMW1



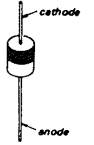
2SB733-4
2SD773-4



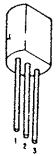
FC52M-5



11EQS10

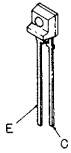


PQ12R04S

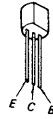


Pin 1 Vec.
2 OUTPUT
3 GND

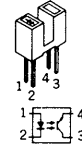
PT420FI



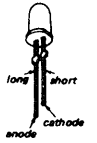
2SC2878
2SD655-E



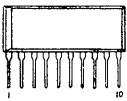
GP1S54



PY5504S-1
SEL4414G-D
TLUR164



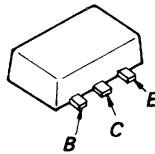
STA455C



2SA1175
2SC2785



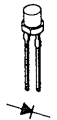
2SD999



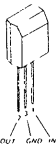
GP2S15S



SEL2413E-D
SEL3413E-D



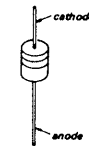
μPC78L12



2SA1206-K1
2SC2901

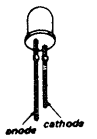


2SK209G



RD7.5ES-B
RD9.1ES-B
1SS119

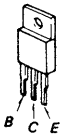
SLR54YC3
SLR-981A



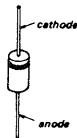
DTA114ES
DTC144ES



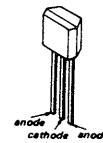
2SB1133-S



EK04
RD10EB2
RD2.7E-L2
RD33EB2
RD39EB2
10E-2



SVC211SP-CD



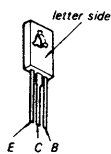
TLY113AP



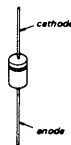
DTA114YK
DTA124EK
DTA144EK
DTC114EK
DTC144EK
2SA812
2SB624-BV4
2SC1623
2SC2223-F14
2SC3326



2SB731



ERB81-004U1
S3S6M
31DF2



1SS123



1S2837

